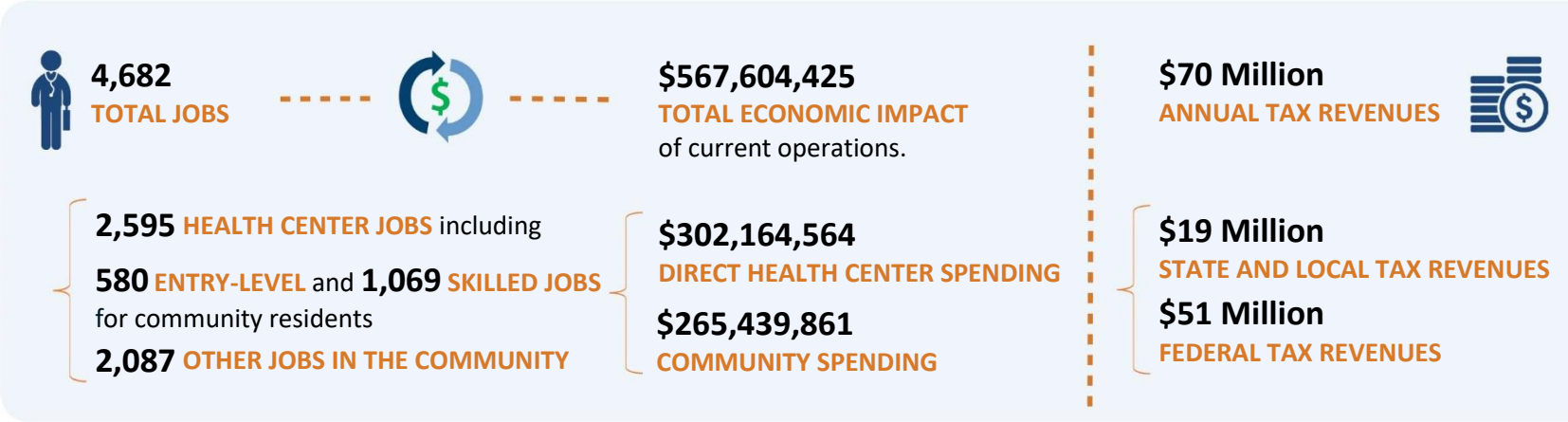


**Thirty-four** Federally Qualified Health Centers (FQHCs) and other safety-net clinics provide care to residents of **Louisiana**. They collectively provide tremendous value and impacts to their communities—from ACCESS to care for vulnerable populations; SAVINGS to the health care system; JOBS and ECONOMIC STIMULUS to local communities; STATE-OF-THE-ART, COMPREHENSIVE, COORDINATED CARE, with a focus on CHRONIC DISEASE MANAGEMENT and QUALITY HEALTH OUTCOMES. Highlights of their **2016 contributions** are shown below.

### Louisiana Health Centers Provide...

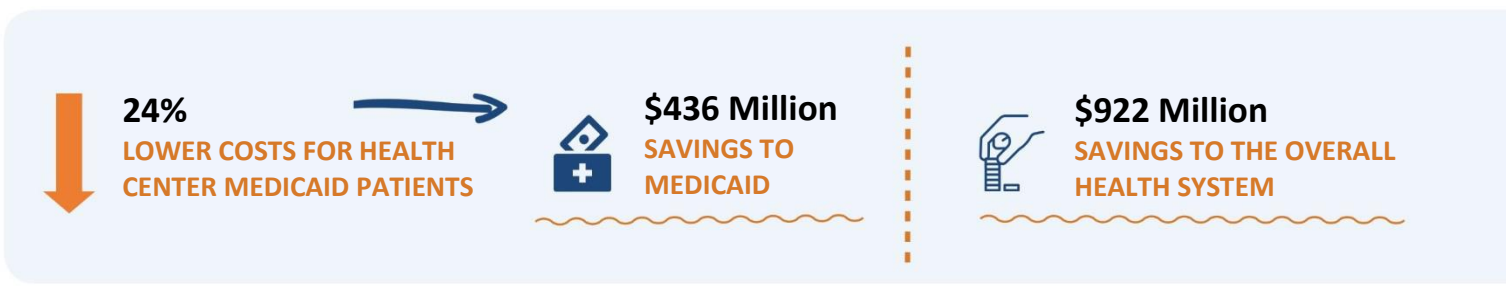
## JOBS

and other positive impacts on the **ECONOMY**



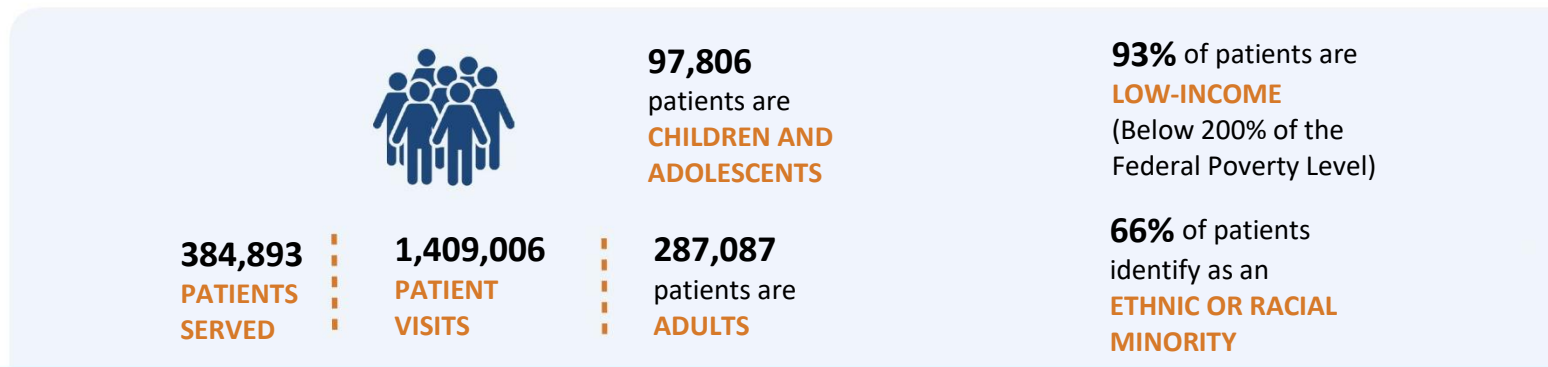
## SAVINGS

to the health system



## ACCESS

to care for vulnerable populations



## COMPREHENSIVE COORDINATED CARE



**296,189** patients  
received **MEDICAL CARE**



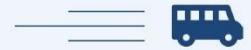
**80,952** patients  
received **DENTAL CARE**



**47,069** patients received  
**MENTAL HEALTH CARE**



**1,925** patients received  
**VISION CARE**



**55,273** patients received at least one  
**ENABLING SERVICE** to overcome  
barriers to care

In addition, patients received non-clinical  
services to connect them to community  
resources such as **HOUSING, JOB TRAINING,  
AND CHILD CARE**

## PREVENTIVE CARE and CHRONIC DISEASE MANAGEMENT



**13,183** patients were  
diagnosed with  
**ASTHMA**



**8,146** patients were  
diagnosed with  
**CORONARY ARTERY DISEASE**



**26,855** children received  
**WELL-CHILD VISITS**



**32,761** patients were  
diagnosed with  
**DIABETES**



**78,006** patients were  
diagnosed with  
**HYPERTENSION**



**50,389** patients received  
**IMMUNIZATIONS** and  
**SEASONAL FLU VACCINES**

## STATE-OF-THE-ART PRACTICE

**100%** of health centers have installed and currently use an  
**ELECTRONIC HEALTH RECORD (EHR)**

**94%** of health centers are currently participating in the  
Centers for Medicare and Medicaid Services (CMS)  
**EHR INCENTIVE PROGRAM "MEANINGFUL USE"**



**71%** of centers recognized as  
**PATIENT-CENTERED MEDICAL HOMES**

## QUALITY HEALTH OUTCOMES



**80%** of health centers met or exceeded at least one  
**HEALTHY PEOPLE 2020 GOAL FOR CLINICAL  
PERFORMANCE**



CLINICAL QUALITY  
MEASURES



IMPROVED HEALTH  
OUTCOMES

### REFERENCES AND DATA SOURCES

1. Access to Care for Vulnerable Populations: Bureau of Primary Health Care, HRSA, DHHS, 2016 Uniform Data System.
2. Savings to Medicaid: Nocon et al. *Health Care Use and Spending for Medicaid Enrollees in Federally Qualified Health Centers Versus Other Primary Care Settings*. American Journal of Public Health: November 2016, Vol. 106, No. 11, pp. 1981-1989.
3. Savings to the Health System: NACHC Fact Sheet: *Health Centers and Medicaid*, December, 2016.
4. Economic and Employment Impacts: Calculated by Capital Link using 2016 IMPLAN Online.
5. Comprehensive Coordinated Care: Bureau of Primary Health Care, HRSA, DHHS, 2016 Uniform Data System.
6. Preventive Care and Chronic Disease Management: Bureau of Primary Health Care, HRSA, DHHS, 2016 Uniform Data System.
7. Quality Health Outcomes: Calculated by Capital Link based on 2016 Uniform Data System information and relevant Healthy People 2020 targets found at <https://www.healthypeople.gov/2020/data-search>.

### Summary of 2016 Total Economic Activity

Stimulated by Current Operations of

		Economic Impact	Employment (# of FTEs*)
Community Impact	Direct	\$ 302,164,564	2,595
	Indirect	\$ 88,144,037	679
	Induced	\$ 177,295,824	1,408
	<b>Total</b>	<b>\$ 567,604,425</b>	<b>4,682</b>

Direct # of FTEs (employment) based on HRSA 2016 UDS state level data for FQHCs.

### Summary of 2016 Tax Revenue

		Federal	State
Community Impact	Direct	\$31,912,366	\$5,134,997
	Indirect	\$6,519,203	\$3,618,899
	Induced	\$12,539,696	\$10,259,352
	<b>Total</b>	<b>\$50,971,265</b>	<b>\$19,013,248</b>
<b>Total Tax Impact</b>		<b>\$69,984,513</b>	

\*Full-Time Equivalent (FTE) of 1.0 means that the person is equivalent to a full-time worker. In an organization that has a 40-hour work week, a person who works 20 hours per week (i.e. 50 percent time) is reported as "0.5 FTE." FTE is also based on the number of months the employee works. An employee who works full time for four months out of the year would be reported as "0.33 FTE" (4 months/12 months).

# VALUE IMPACT of HEALTH CENTERS

## Louisiana Primary Care Association

### HOW ECONOMIC IMPACT IS MEASURED

Using IMPLAN, integrated economic modeling software, this analysis applies the “multiplier effect” to capture the direct, indirect, and induced economic effects of health center business operations and capital project plans. IMPLAN generates multipliers by geographic region and by industry combined with a county/state database. It is widely used by economists, state and city planners, universities and others to estimate the impact of projects and expenditures on the local economy. This analysis was conducted using 2015 IMPLAN Online.

### WHAT ARE DIRECT AND COMMUNITY IMPACTS?

Direct impacts result from *health center expenditures associated with operations, new facilities, and hiring.*

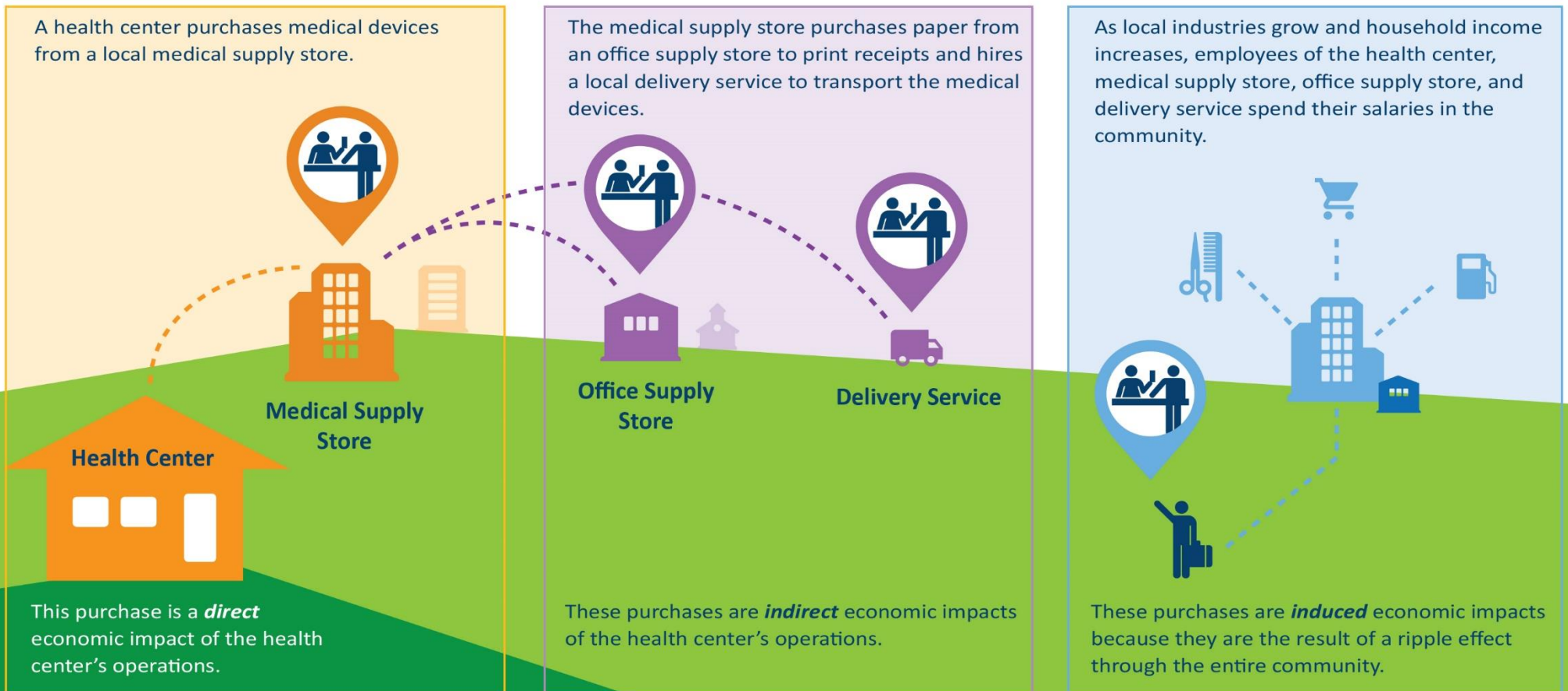
Community impacts can be indirect, resulting from *purchases of local goods and services, and jobs in other industries.*

Community impacts can be induced, resulting from *purchases of local goods and services at a household level made by employees of the health center and suppliers.*

A health center purchases medical devices from a local medical supply store.

The medical supply store purchases paper from an office supply store to print receipts and hires a local delivery service to transport the medical devices.

As local industries grow and household income increases, employees of the health center, medical supply store, office supply store, and delivery service spend their salaries in the community.



### COMMUNITY HEALTH CENTERS INCLUDED IN THIS ANALYSIS

CrescentCare  
David Raines Community Health Center  
Delhi Community Health Center  
EXCELth, Inc.  
Health Care for the Homeless  
Iberia Comprehensive Community Health Center, Inc.  
Innis Community Health Center  
JeffCare  
Jefferson Community Health Care Centers  
Marillac Community Health Centers  
Morehouse Community Medical Centers  
MQVN Community Development Corporation  
Odyssey House Louisiana  
Open Health Care Clinic  
Outpatient Medical Center  
Primary Care Providers for a Healthy Feliciana  
Primary Health Services Center  
Priority Health Care  
Rapides Primary Health Care Center, Inc  
Saint Thomas Community Health Center  
Southeast Community Health Systems  
Southwest Louisiana Primary Healthcare Center  
St. Gabriel Health Clinic, Inc.  
Start Corporation  
SWLA Center for Health Services  
Teche Action Board, Inc.  
Tensas Community Health Center  
Winn Community Health Center  
Access Health Louisiana  
Baton Rouge Primary Care Collaborative, inc.  
CareSouth  
CASSE Community Health Institute  
Common Ground Health Clinic  
CPHD 2 Medical Center

This report was developed by Capital Link, a non-profit organization that has worked with hundreds of health centers and Primary Care Associations for over 18 years to plan capital projects, finance growth, and identify ways to improve performance. We provide innovative consulting services and extensive technical assistance with the goal of supporting and expanding community-based health care. For more information, visit us online at [www.caplink.org](http://www.caplink.org).