

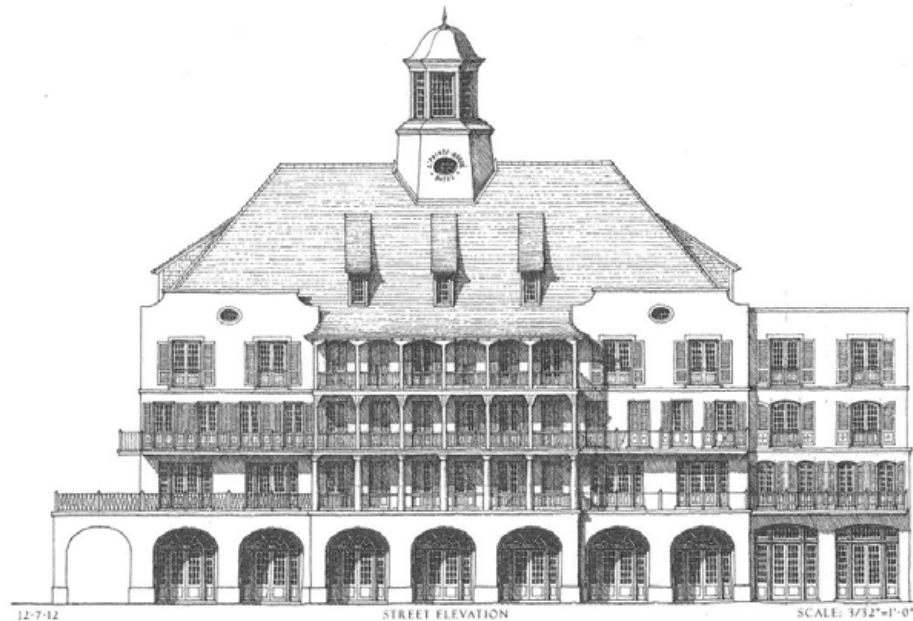
POINTE-MARIE VILLAGE  
ARCHITECTURAL  
SKETCHBOOK



RESORT - MIXED-USE - RESIDENTIAL - COMMERCIAL - SCHOOL - CHURCH

COOPER JOHNSON SMITH  
ARCHITECTS & TOWN PLANNERS

POINTE-MARIE  
ARCHITECTURAL SKETCH BOOK



BATON ROUGE, LOUISIANA  
JANUARY 2013

COOPER JOHNSON SMITH  
ARCHITECTS & TOWN PLANNERS



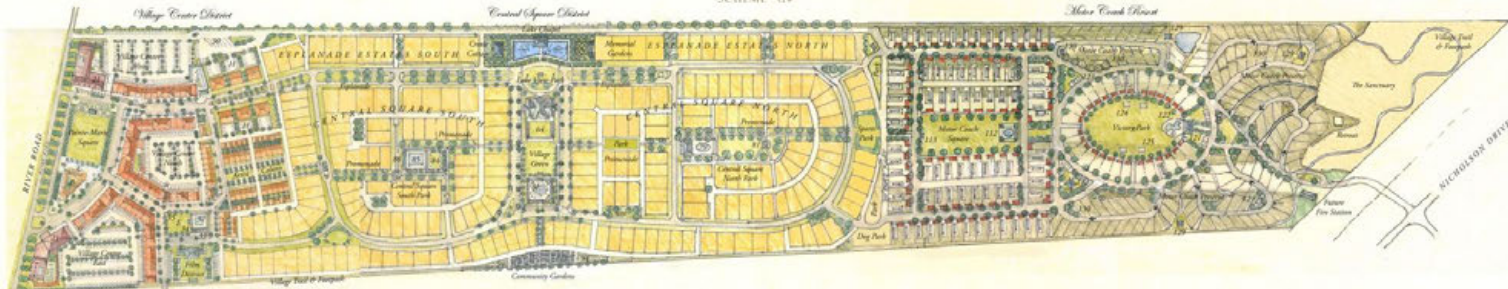
COOPER JOHNSON SMITH  
ARCHITECTS & TOWN PLANNERS



# Pointe-Marie Village Plan

BATON ROUGE, LOUISIANA

SCHEME "G"



SCALE: 1"=100'  
12-12-12



### LEGEND

#### Village Center District

##### A. Pointe-Marie Square

- 1. Village Outdoor Gathering
- 2. Amphitheater
- 3. Retail @ Festival
- 4. Farmers Market
- 5. Food Trucks
- 6. Kiosk @ Food Cart
- 7. Multiple Use Activity Lawn
- 8. Parking Green
- 9. Residential Porches

##### B. The Triangle

- 10. Grocery Crib
- 11. Bike Shop
- 12. Information Office
- 13. Development @ Sales Office
- 14. Interior Office
- 15. Small Event Courtyard
- 16. Intimate Outdoor Event (Garden, Terrace, and Gallery)
- 17. Outdoor Pointe-Marie Square

#### C. Village Plaza

- 16. Garden with Garden Seating
- 17. Town Step
- 18. Outdoor Plaza with Café
- 19. Seating @ Street Lighting
- 20. Plaza Office
- 21. Seating Pavilion
- 22. Multiple Use Activity Lawn
- 23. Café
- 24. Designer Shop
- 25. Health @ Fitness
- 26. Office
- 27. Café Restaurant
- 28. Apartments
- 29. Landscaped Parking
- 30. Minor Coach Club @ Landing
- 31. Pool (Ramp @ Ground Level)

#### D. Village Center East, West & North

- 21. Food
- 22. Restaurant
- 23. Café
- 24. Designer Shop
- 25. Health @ Fitness
- 26. Office
- 27. Café Restaurant
- 28. Apartments
- 29. Landscaped Parking
- 30. Minor Coach Club @ Landing
- 31. Pool (Ramp @ Ground Level)

#### E. Village Center Park

- 32. Swimming Pool
- 33. Pool Cabana
- 34. Activity @ Sports Field
- 35. Village Gathering Space

#### F. Film District

- 36. Theater
- 37. Production
- 38. Post Production
- 39. Office

#### G. Artist Colony

- 40. Low-Rise Townhomes (Residence @ Gallery)
- 41. Pool (Outdoor Spa)
- 42. Home, Activities @ Gathering Space

#### H. Lakeside Plaza

- 42. Restaurant
- 43. Swimming Pool

#### I. Meeting House District

- 45. North South Pedestrian Connection
- 46. Smelling
- 47. Park
- 48. Pathways @ Walkways
- 49. Swimming Pool
- 50. Activities

#### J. Townsquare

- 49. North South Pedestrian Connection
- 46. Smelling
- 47. Park
- 48. Pathways @ Walkways
- 49. Swimming Pool
- 50. Activities

#### K. Village Green

- 51. Amphitheater
- 52. Townsquare
- 53. Mini @ Video Shop
- 54. Residential Pavilion
- 55. Sports Field
- 56. Outdoor Gathering
- 57. Landscaped Parking
- 58. Pool Bar

#### L. Meeting House

- 59. Village-Side Outdoor Event @ Gathering
- 60. Wedding
- 61. Multi-Use Ball

#### M. Central Square North Park

- 62. Concrete @ Pavement
- 63. Sports Pavilion @ Skateboard
- 64. Elevated Event Lawn
- 65. Shade Arbor
- 66. Pool Bar

#### N. Sports Park

- 75. Multi-Use Sports Field
- 76. Activity Field
- 77. Sports-Related Event @ Gathering

#### O. Central Square South Park

- 67. Swimming Pool
- 68. Entry Pavilion
- 69. Rail @ Shower Pavilion
- 70. Cabana
- 71. Café Seating with Arbor
- 72. Spa Deck
- 73. Landscaped Parking
- 74. Pool Bar

#### P. Central Square North Park

- 78. Multi-Use Field @ Activity Area
- 79. Adult Swimming Pool
- 80. Spa Pool
- 81. Fire Pit
- 82. Bath @ Shower Pavilion
- 83. Garden Structure

#### Q. Community Gardens

- 90. Vegetable Garden
- 91. Fruit Garden
- 92. Flower Garden
- 93. Gathering @ Seating @ Community
- 94. Pool

#### R. Lake Chapel

- 95. Chapel (overlooking Lake)
- 96. Restroom @ Park
- 97. Discouraged Bridge (to Meeting House @ Village Green)

#### S. Coach Cottage

- 98. Intimate Outdoor Gathering
- 99. Event
- 100. Reception
- 101. Ancillary Structure (for Meeting House wedding and event)

#### T. Home & Cottage Neighborhoods

- 102. Central Square Plaza
- 103. Epitaphic Entry (North) @ Permeable (East) @ Permeable (West)
- 104. Central Square South
- 105. Epitaphic Entry (North) @ Permeable (East) @ Permeable (West)
- 106. Event Area in Entry Village @ Activities

#### U. Church

- 107. Stone Chantry Neighborhood
- 108. Minor Coach Square
- 109. Minor Coach Preserve
- 110. Landscaped Community Entrance
- 111. Drive Access in Entry Village @ Activities
- 112. Arrival Parking @ Landing Area (see 103 - Village Center District)

#### V. Minor Coach Square

- 109. Stone overhanging and surrounding
- 110. Entry Plaza
- 111. Spacious Neighborhood Green
- 112. Stone Club
- 113. Swimming Pool
- 114. Landscaped Parking
- 115. Seating Pavilion
- 116. Outdoor Gathering
- 117. Seating

#### W. Village Park

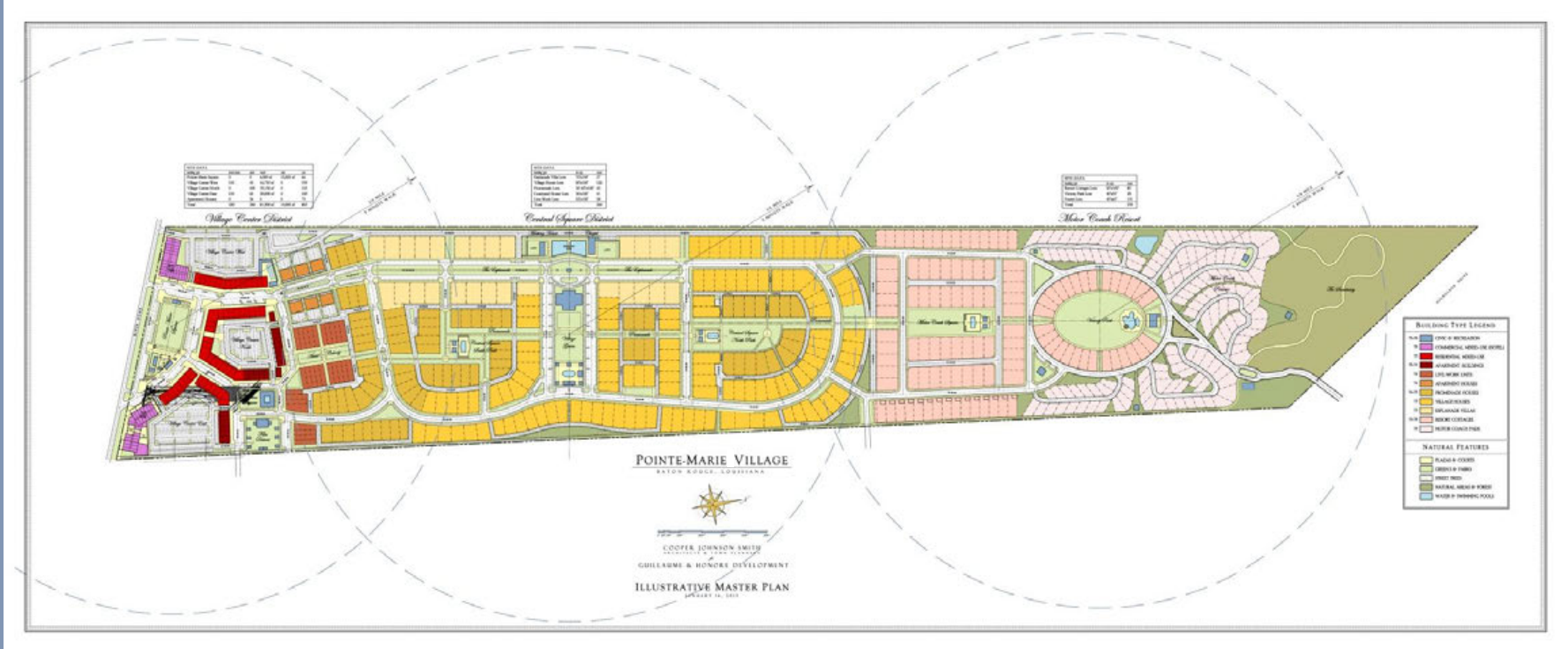
- 115. Stone overhanging Park @ Plaza
- 116. Spacious Neighborhood Green
- 117. Children
- 118. Seating Pavilion
- 119. Landscaped Parking
- 120. Seating Pavilion
- 121. Outdoor Gathering
- 122. Seating

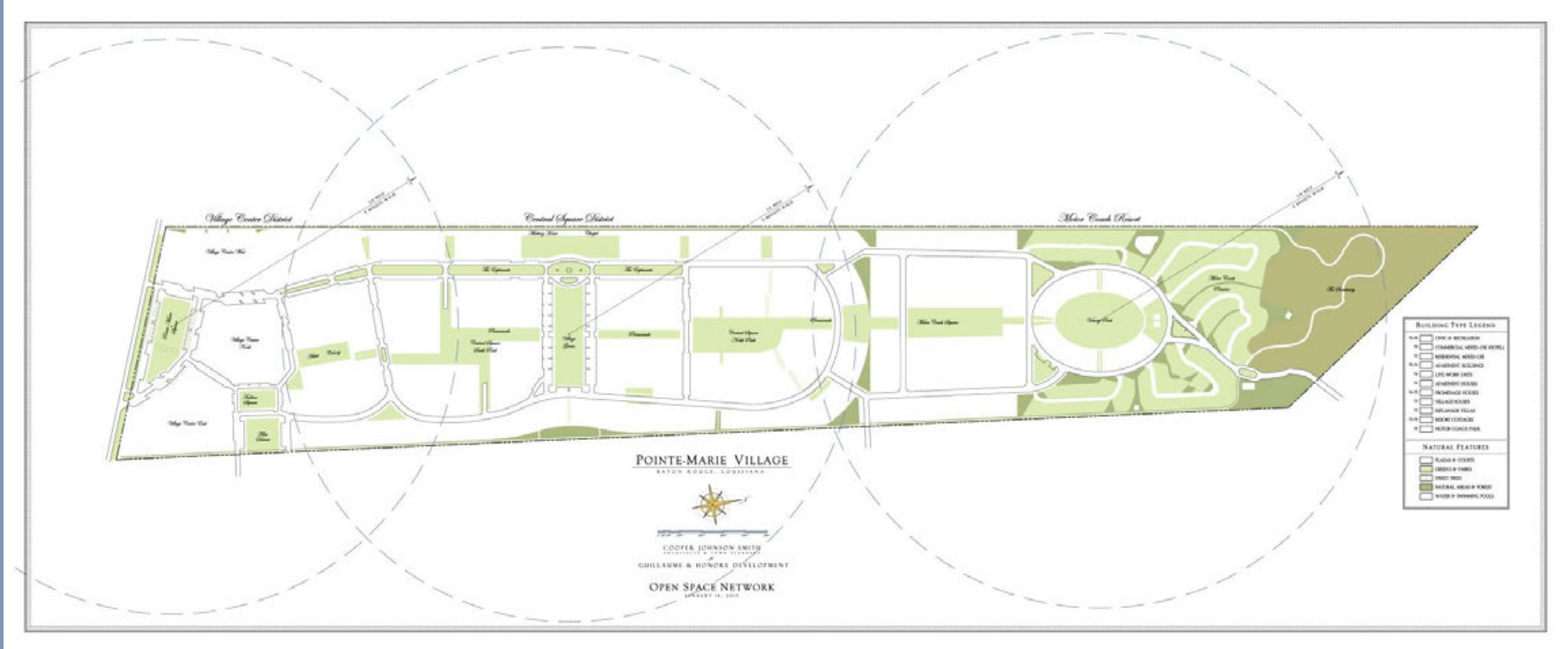
#### X. Minor Coach Preserve

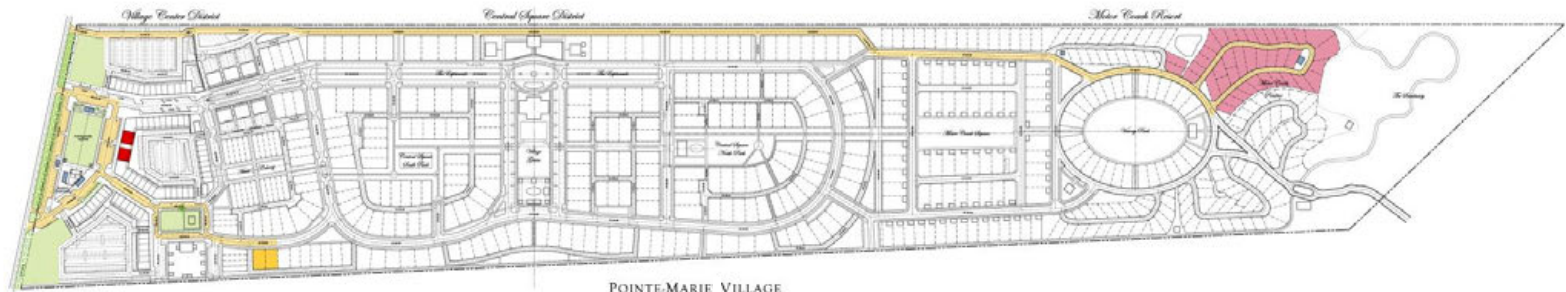
- 128. Wooded Forest Site
- 129. Complex Structure
- 130. Bath
- 131. Seating
- 132. Landscaped Parking
- 133. Seating Pavilion
- 134. Outdoor Gathering
- 135. Seating

#### Y. The Sanctuary

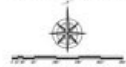
- 131. Preserve @ Parkland Area
- 132. The Sanctuary
- 133. Seating Pavilion
- 134. Outdoor Gathering
- 135. Seating







POINTE-MARIE VILLAGE  
ESTÉE, RÉGION, QUÉBEC



COOPER JOHNSON SMITH  
ARCHITECTS & TOWN PLANNERS  
in association with  
GUILLAUME & HONORÉ DEVELOPMENT

Phase I Plan  
JANUARY 11, 2012

POINTE-MARIÉ

ARCHITECTURAL SKETCH BOOK

---

CONTENTS

VILLAGE CENTER DISTRICT

- PLAN
- SKETCHES

CENTRAL SQUARE DISTRICT

- PLAN
- SKETCHES

MOTOR COACH RESORT

- PLAN
- SKETCHES



POINTE-MARIE

ARCHITECTURAL SKETCH BOOK

VILLAGE CENTER

VILLAGE CENTER



# Pointe-Marie Village Center

BATON ROUGE, LOUISIANA

SCHEME "G+"

## SITE DATA

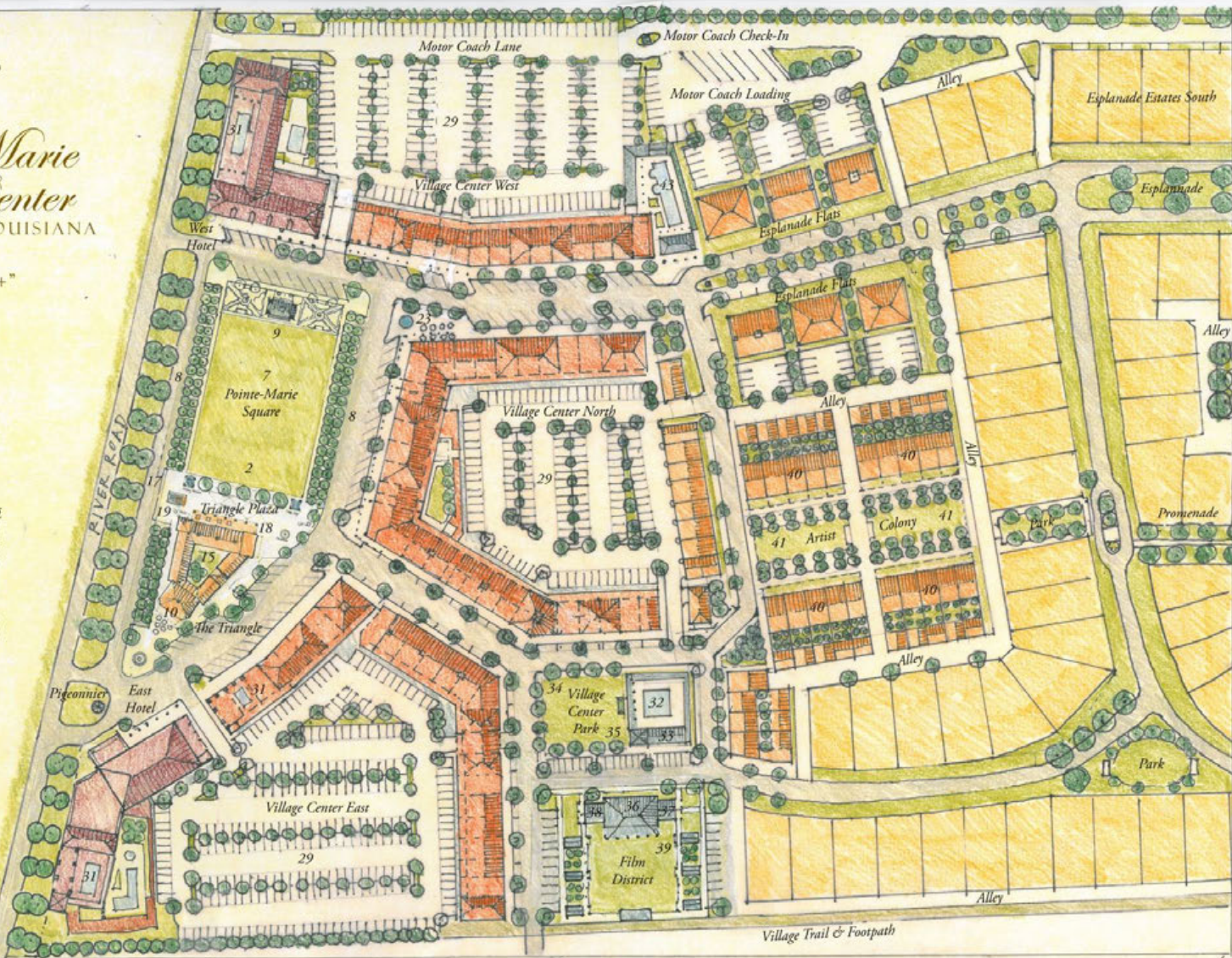
	Hotel	Apts.	Retail(sf)	Cars
Block A	110	45	16,750	190
Block B	-	100	39,150	153
Block C	110	65	20,000	249
Block D	-	-	6,000	-
6-Packs	-	36	-	60
Street Cars	-	-	-	211
<b>Total:</b>	<b>220</b>	<b>246</b>	<b>82,000</b>	<b>863</b>



SCALE: 1"=100'



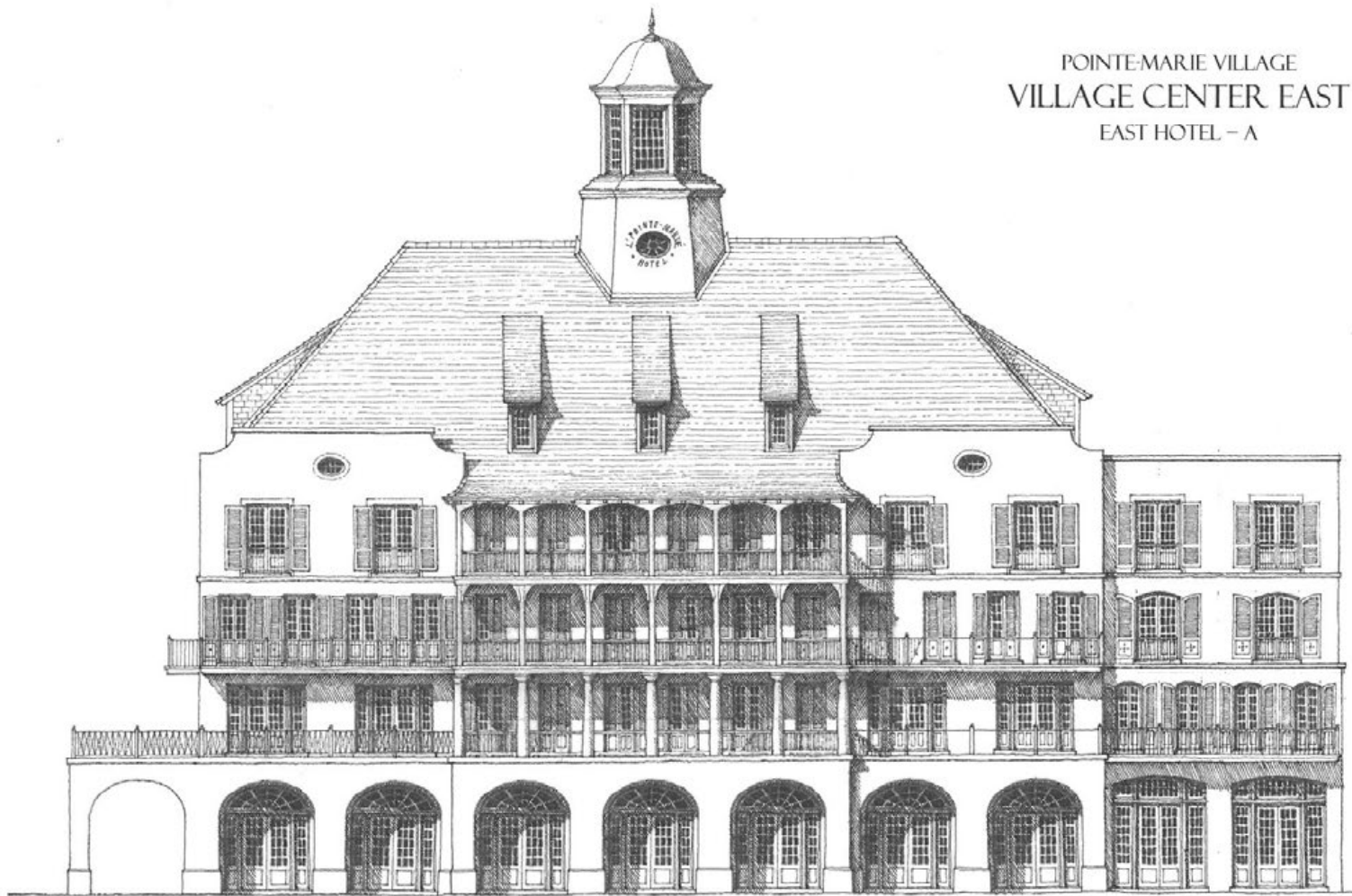
12-11-12





COOPER JOHNSON SMITH  
ARCHITECTS & TOWN PLANNERS

POINTE-MARIE VILLAGE  
VILLAGE CENTER EAST  
EAST HOTEL - A



12-7-12

STREET ELEVATION

SCALE: 3/32"=1'-0"

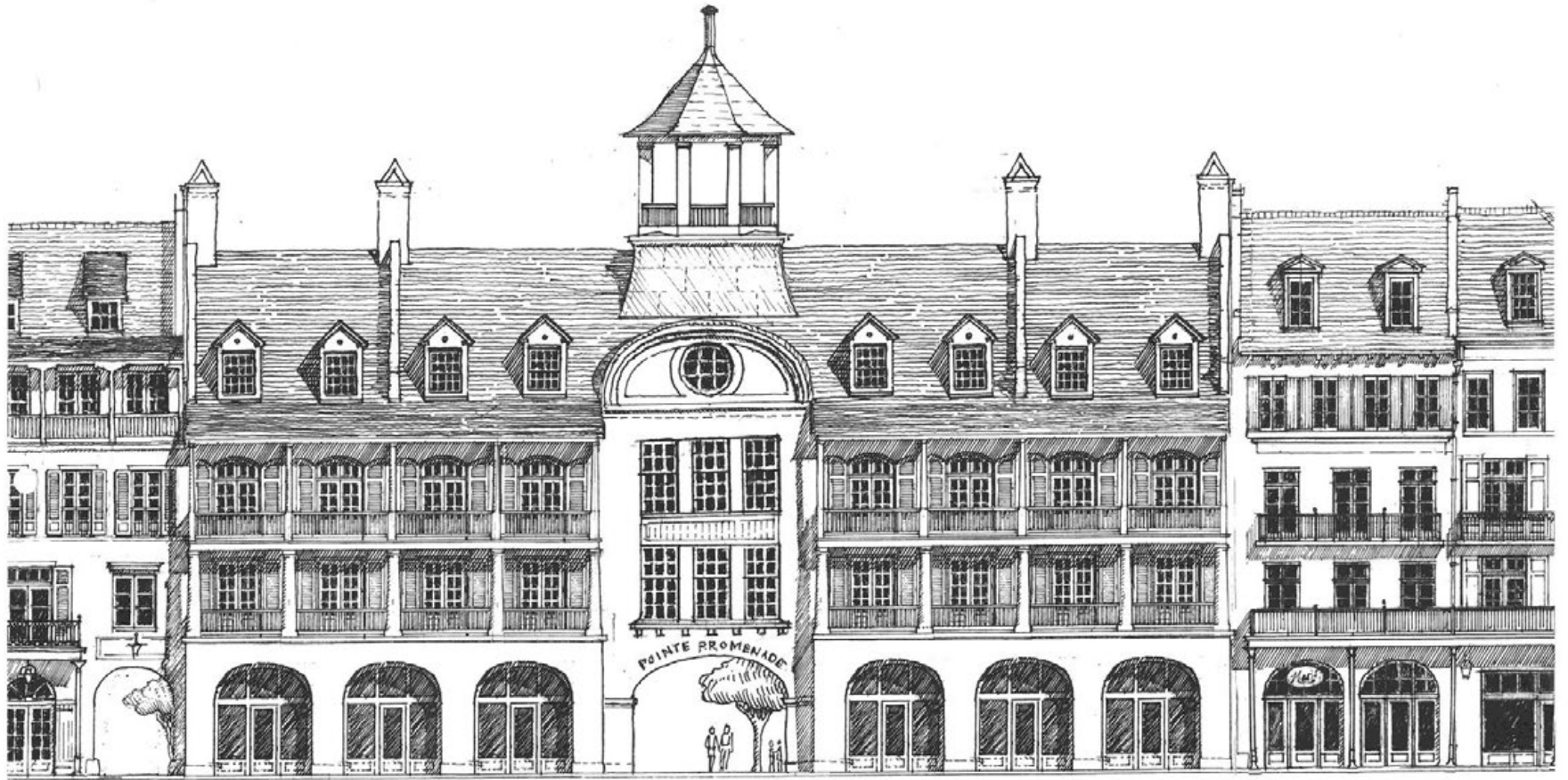
POINTE-MARIE VILLAGE  
VILLAGE CENTER EAST  
EAST HOTEL - B



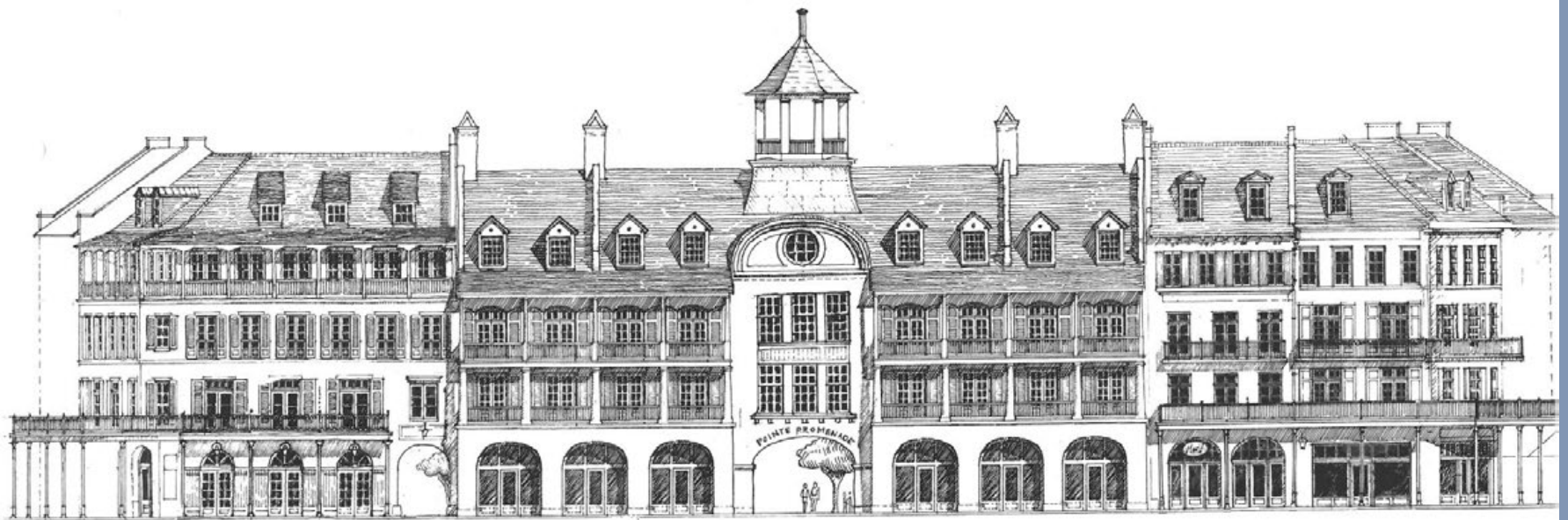
12-7-12

SCALE: 3/32"=1'-0"

STREET ELEVATION



POINTE-MARIE VILLAGE  
VILLAGE CENTER NORTH



POINTE-MARIE VILLAGE  
VILLAGE CENTER NORTH



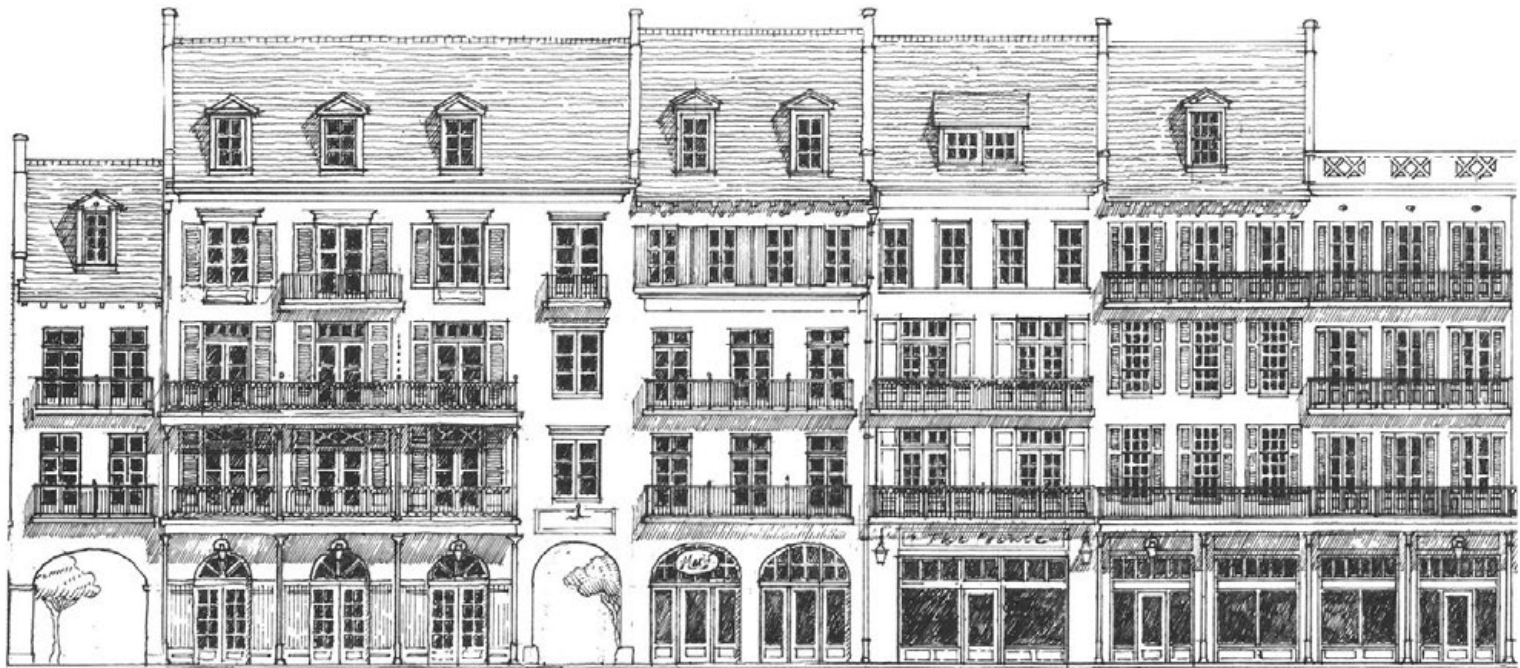
COOPER JOHNSON SMITH  
ARCHITECTS & TOWN PLANNERS



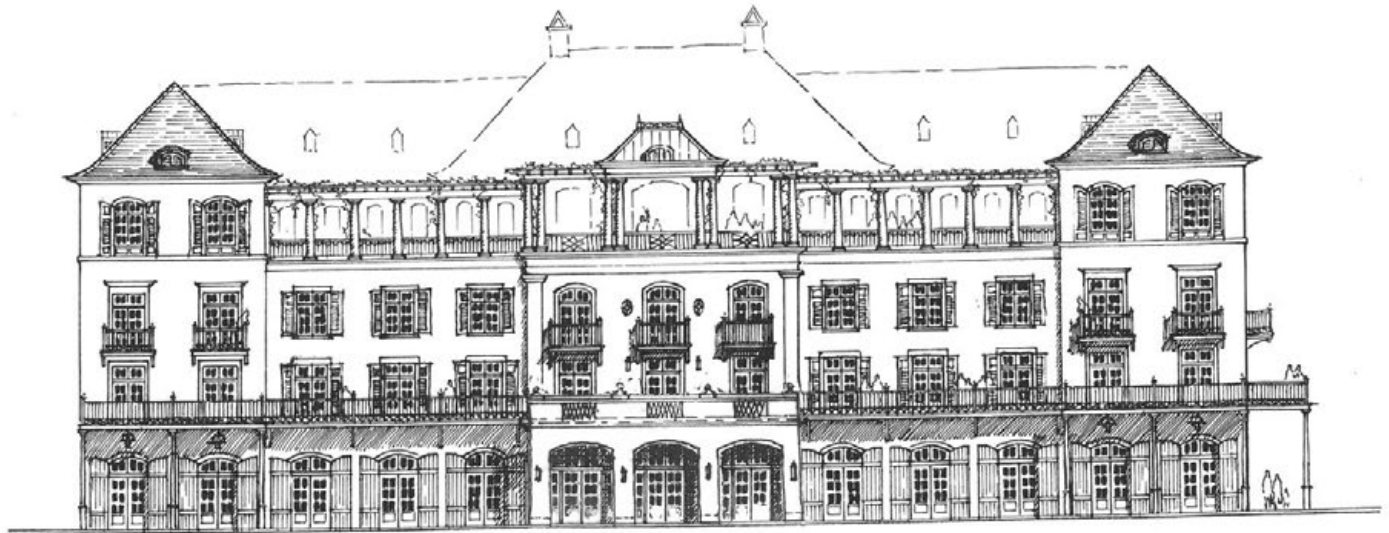


POINTE-MARIE VILLAGE  
VILLAGE CENTER NORTH

*West Elevation*

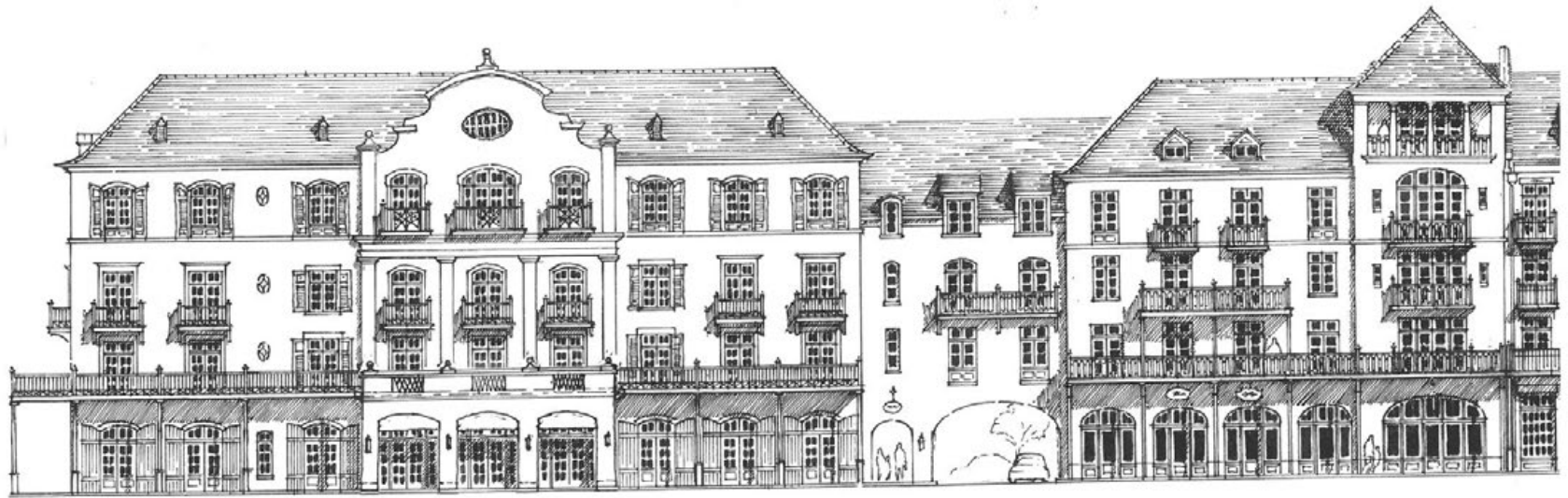


VILLAGE CENTER EAST



*Hotel - South Cleveland*  
11 - 29 - 12

POINTE-MARIE VILLAGE  
VILLAGE CENTER WEST

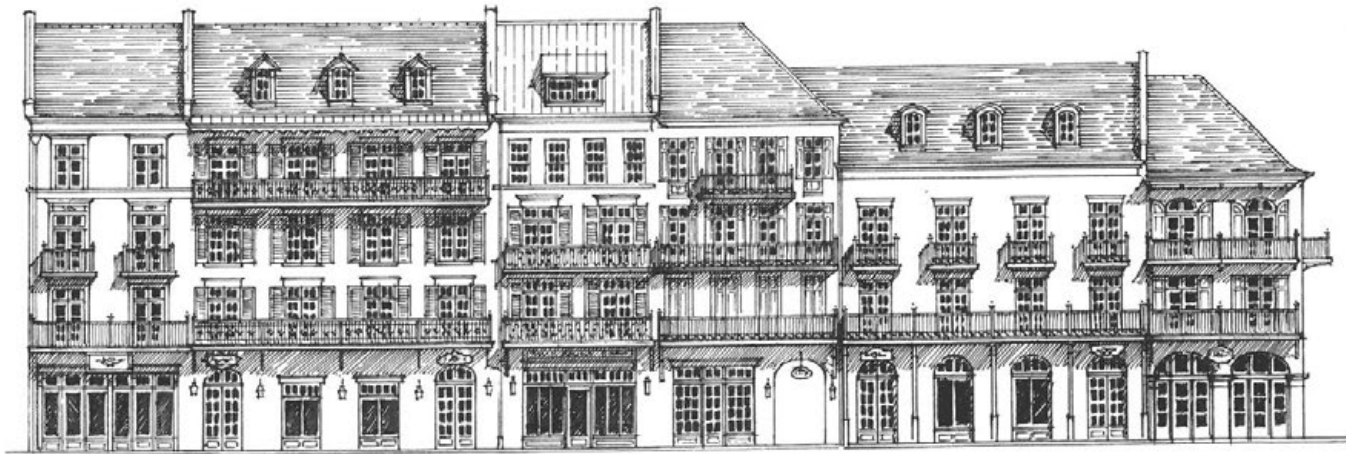


*Hotel Entrance*

*East Elevation*

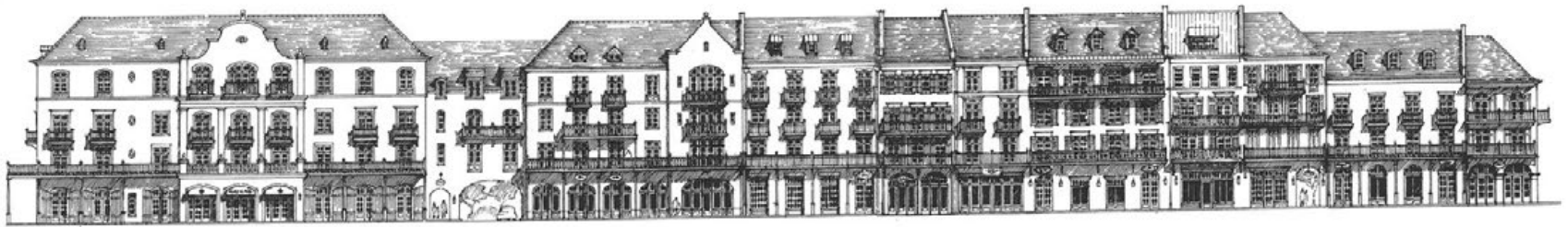
*Slats over retail*

POINTE-MARIE VILLAGE  
VILLAGE CENTER WEST



*East Elevation*

POINTE-MARIÉ VILLAGE  
VILLAGE CENTER WEST



POINTE-MARIÉ VILLAGE  
VILLAGE CENTER WEST  
STREET ELEVATION

THE PAVILIONS OF  
POINTE-MARIE SQUARE  
POINTE-MARIÉ VILLAGE, LOUISIANA



*Screen Meetinghall*



*Monument Light*



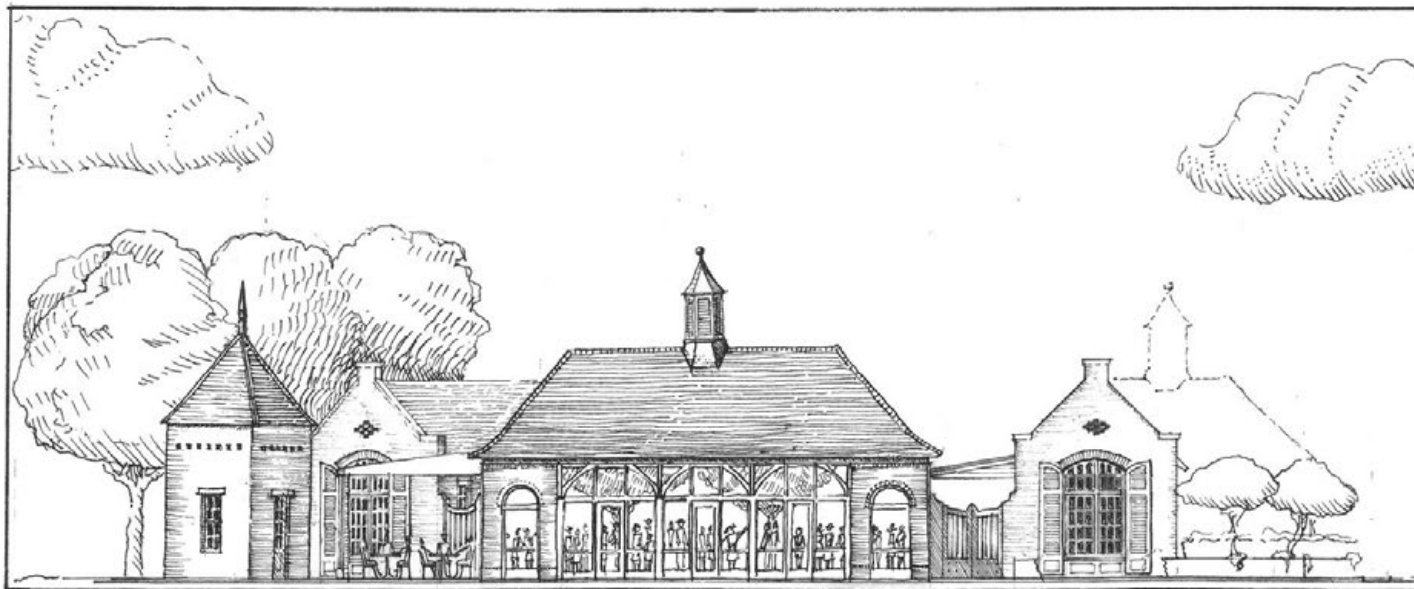
*Cooking Pavilion*



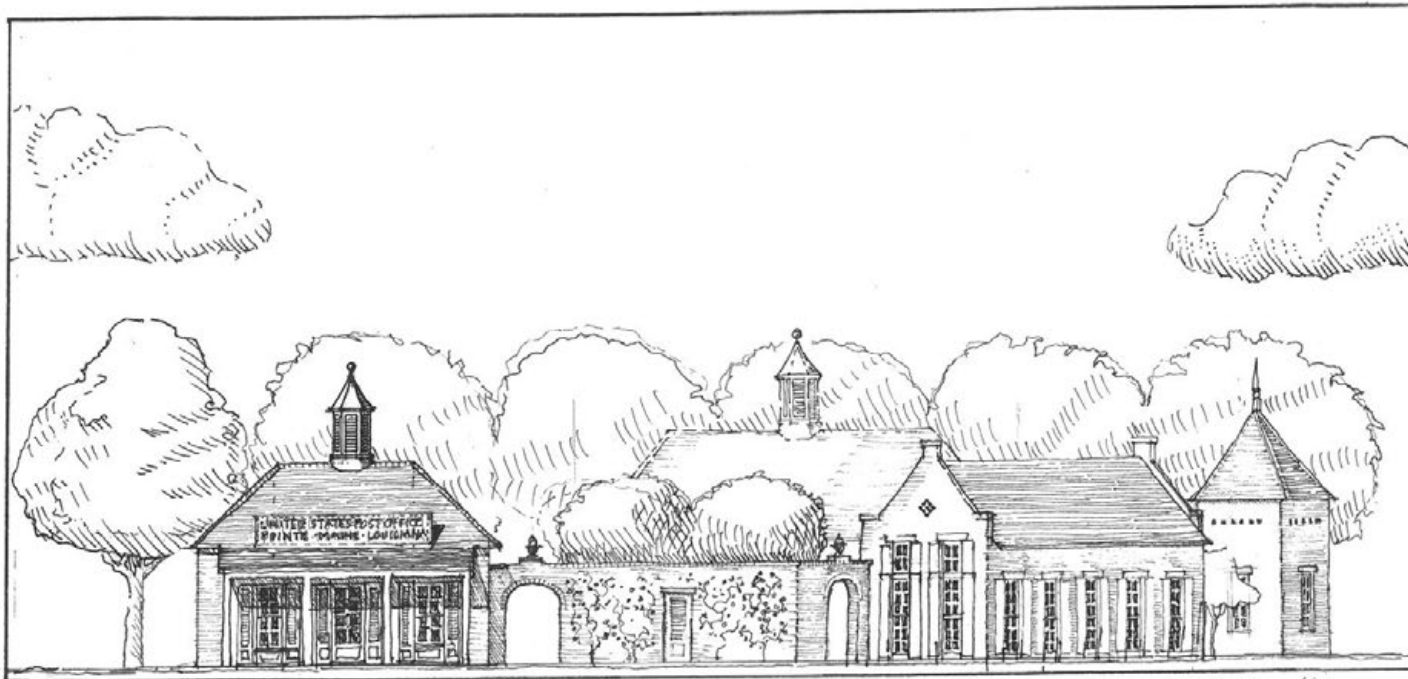
*David's Band Pavilion*



*Tramm. Stop*



$\frac{3}{32}'' = 1'-0''$

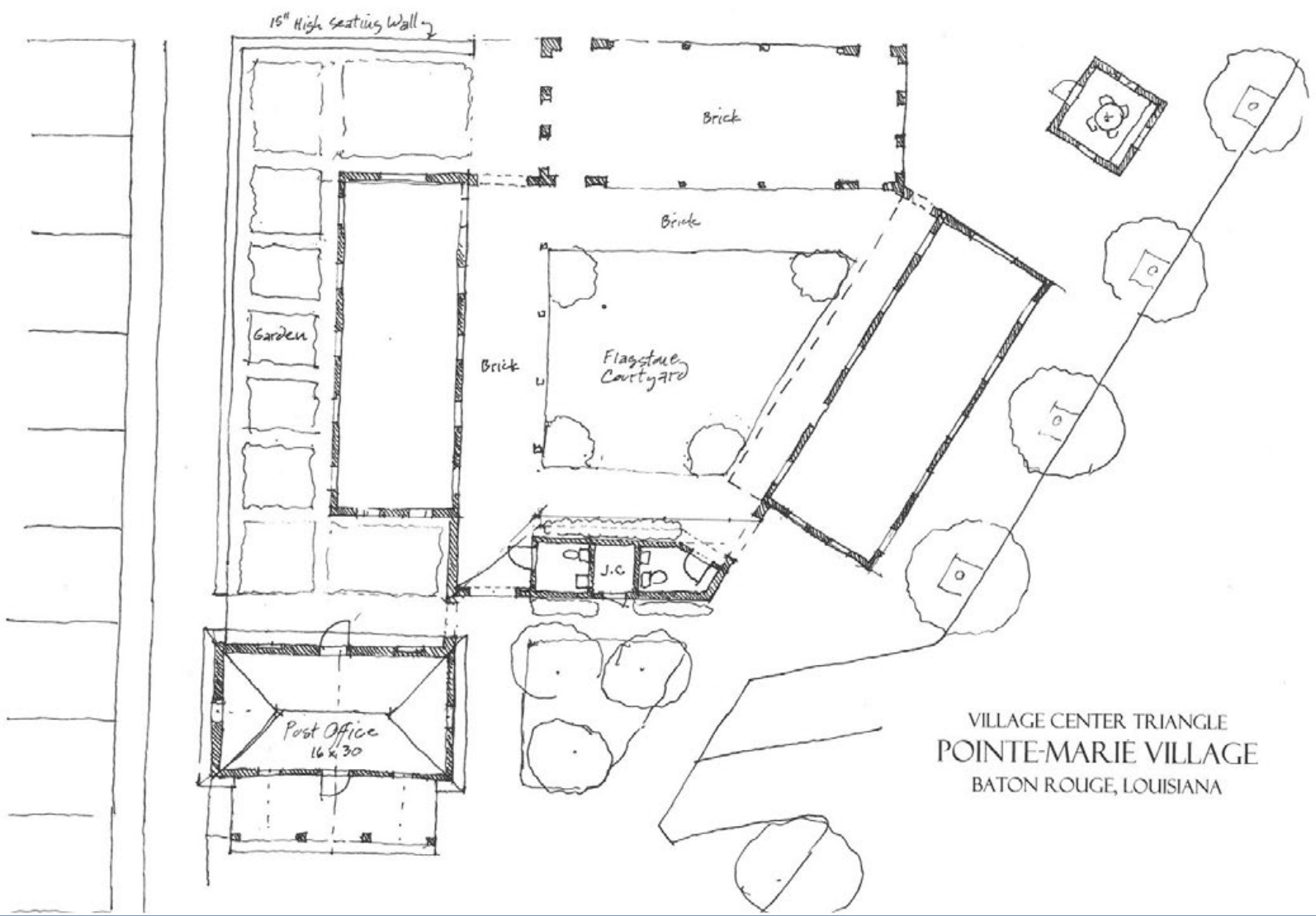


*East Elevation*

VILLAGE CENTER TRIANGLE  
POINTE-MARIE VILLAGE  
BATON ROUGE, LOUISIANA

$\frac{3}{32}'' = 1'-0''$



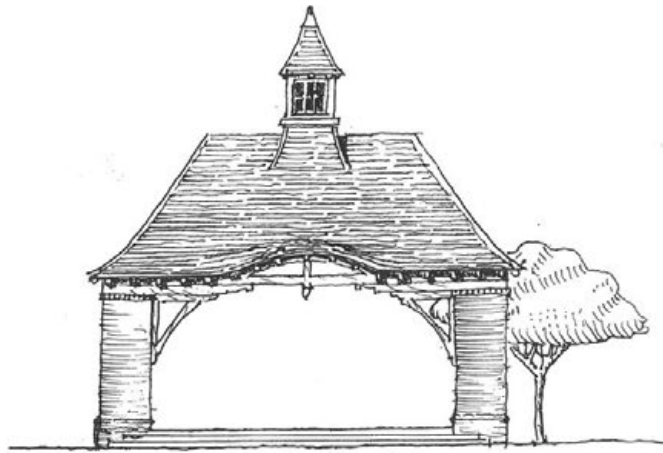




Monument Light



Cooking Pavilion



Bandstand Pavilion

16x32



Tram Stop

12x12

Pavilions @ Pointe-Marie Square



Cooper Johnson Smith  
architects & town planners

Esplanade Flats Great Houses - east elevations



six unit buildings

Pointe Marie Village  
Baton Rouge, Louisiana

POINTE-MARIÉ

ARCHITECTURAL SKETCH BOOK

CENTRAL SQUARE DISTRICT

CENTRAL SQUARE DISTRICT



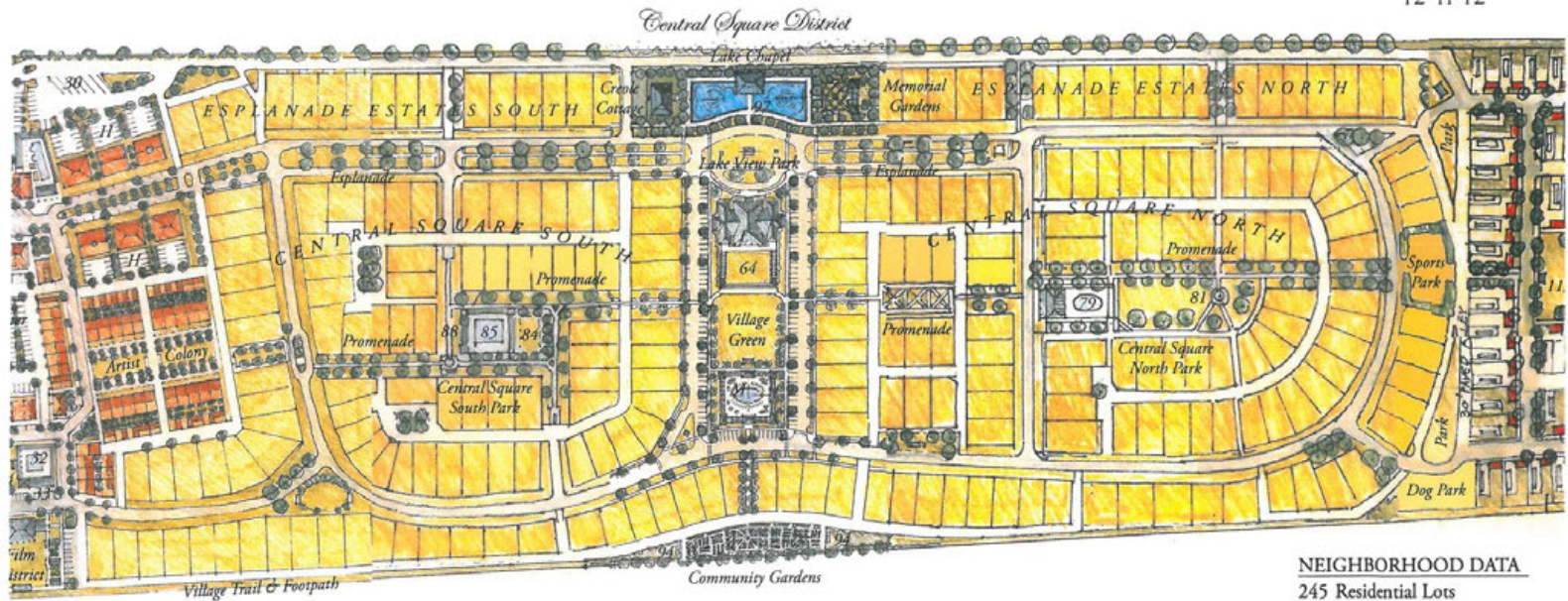
CENTRAL SQUARE DISTRICT  
*Pointe-Marie Village Plan*  
BATON ROUGE, LOUISIANA

SCHEME "G+"



SCALE: 1"=200'

12-11-12

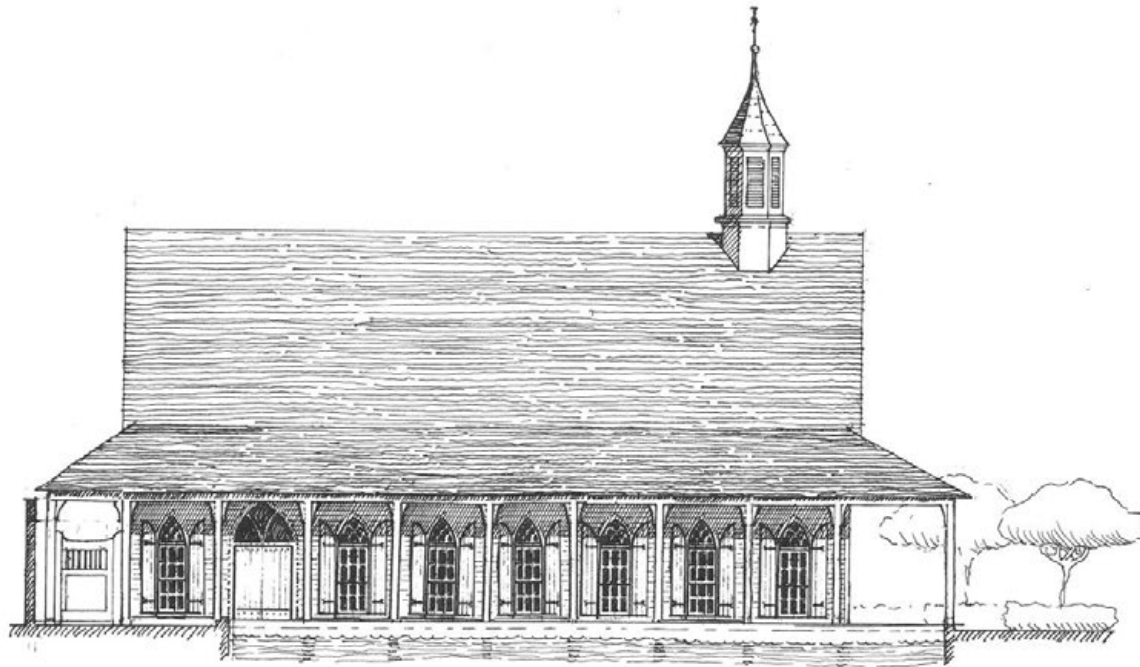


**NEIGHBORHOOD DATA**

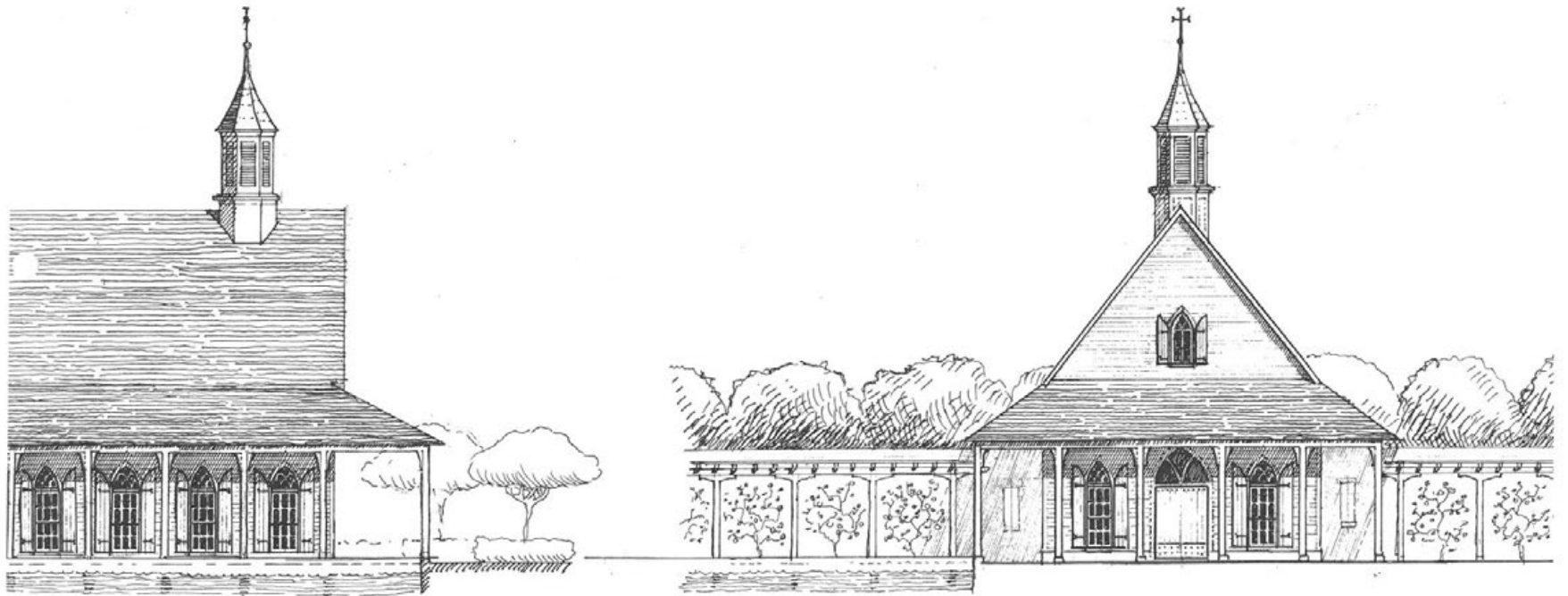
245 Residential Lots

24 Townhouses

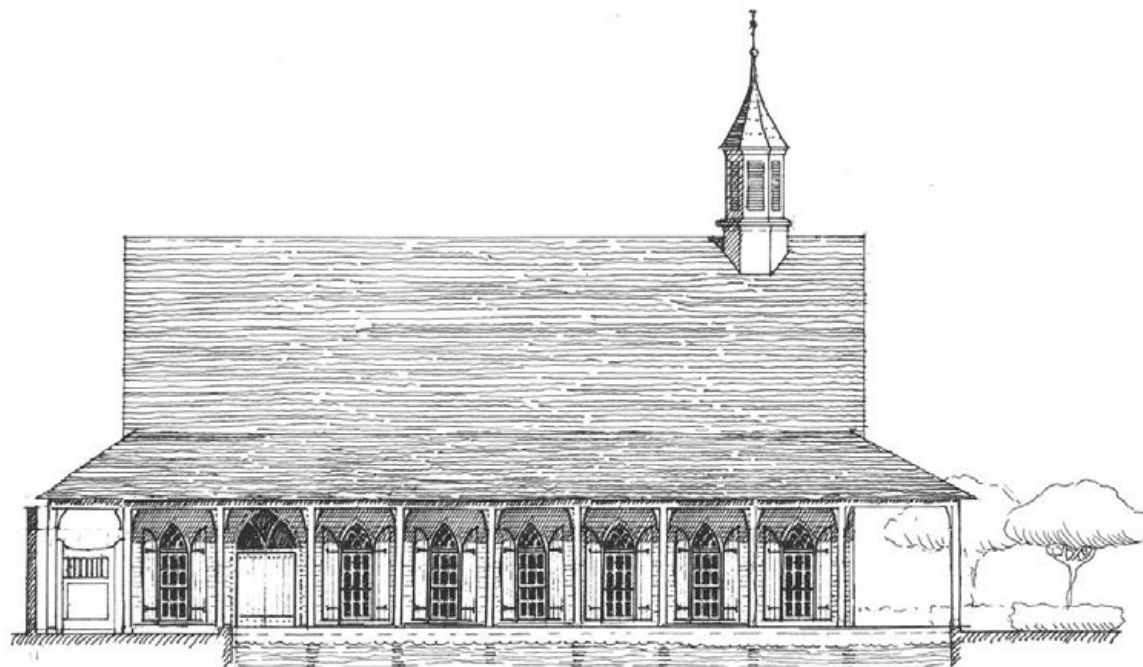
269 Total Units



SIDE (LAKEFRONT) ELEVATION  
POINTE-MARIE CHAPEL

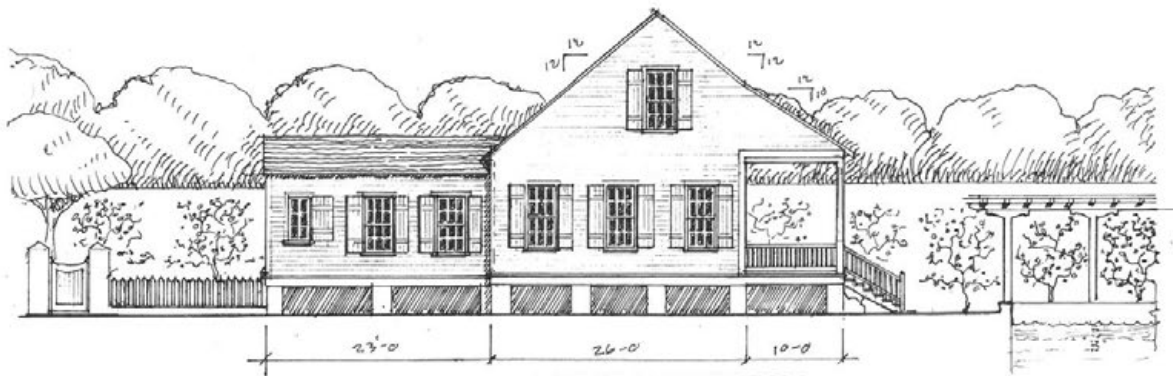


BOULEVARD ELEVATION  
POINTE-MARIE CHAPEL



SIDE (LAKEFRONT) ELEVATION  
POINTE-MARIE CHAPEL



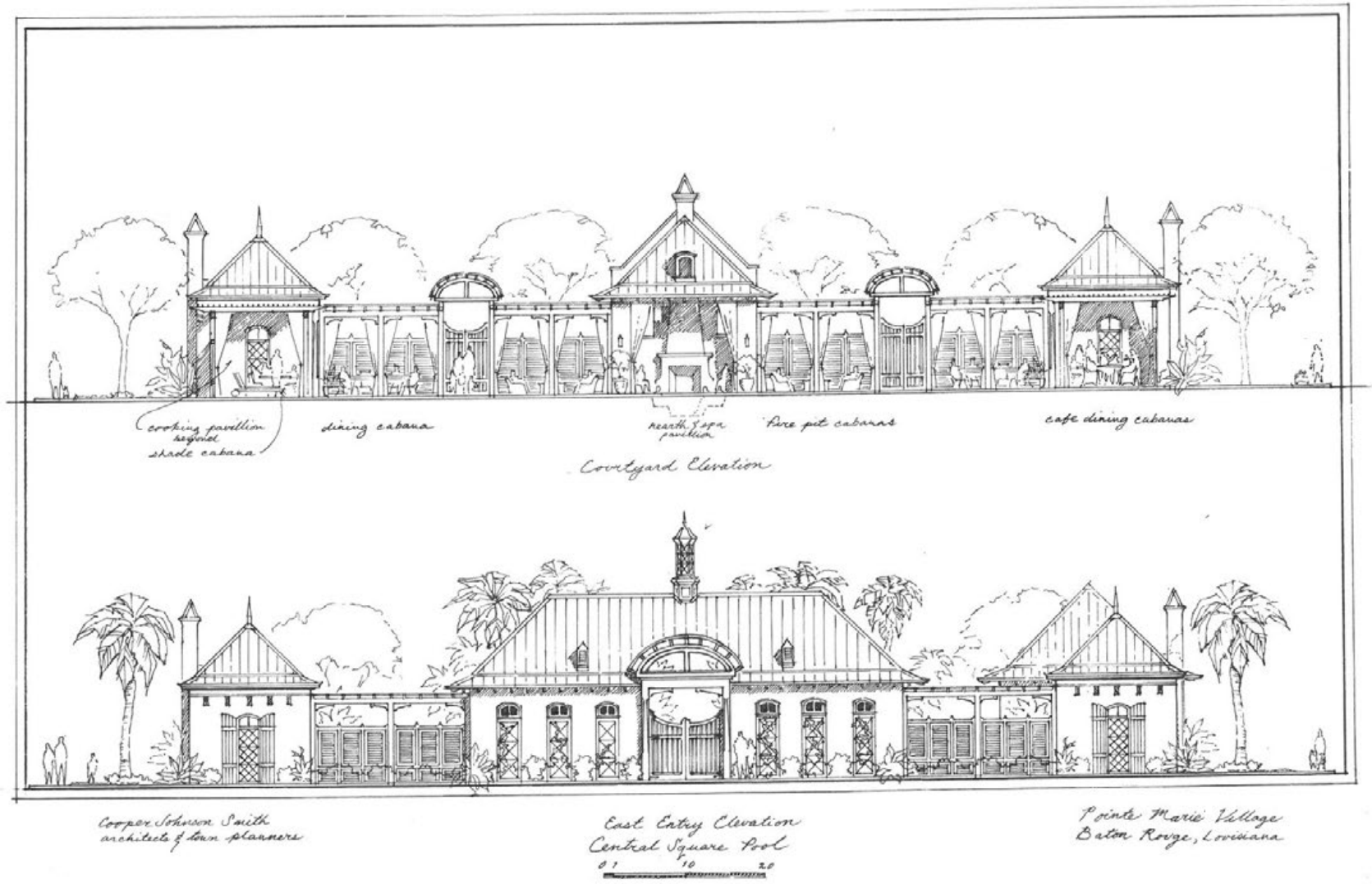


LAKESIDE ELEVATION



BOULEVARD ELEVATION

CREOLE COTTAGE MEETING HOUSE



cooking pavillion  
seating  
shade cabana

dining cabana

hearth & sofa  
pavillion

fire pit cabanas

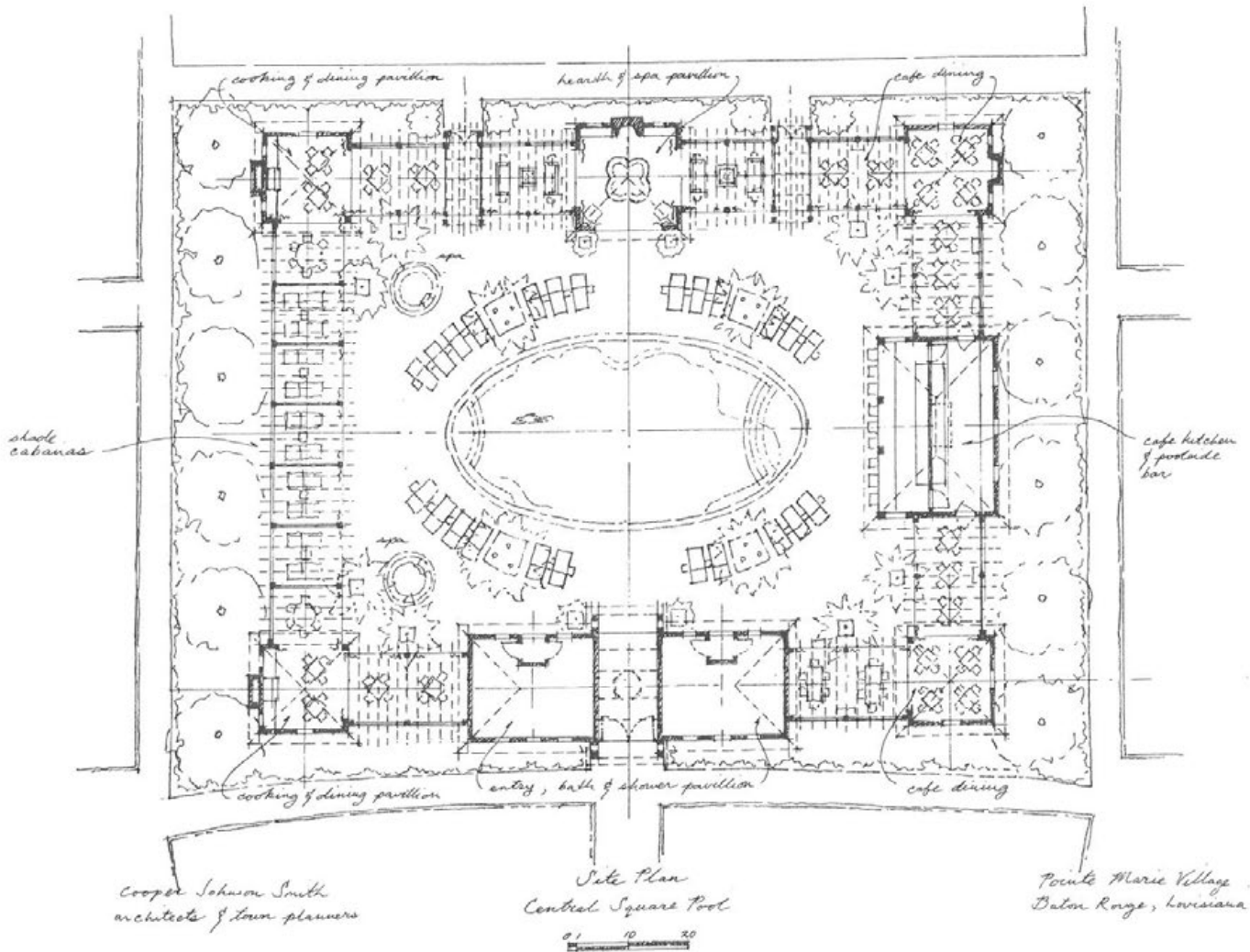
cafe dining cabanas

Courtyard Elevation

Cooper Johnson Smith  
architects & town planners

East Entry Elevation  
Central Square Pool  
0 1 10 20

Pointe Marie Village  
Baton Rouge, Louisiana





COOPER JOHNSON SMITH  
ARCHITECTS & TOWN PLANNERS

*Pointe Marie Meeting House*

*Pointe Marie Village  
Baton Rouge, Louisiana*

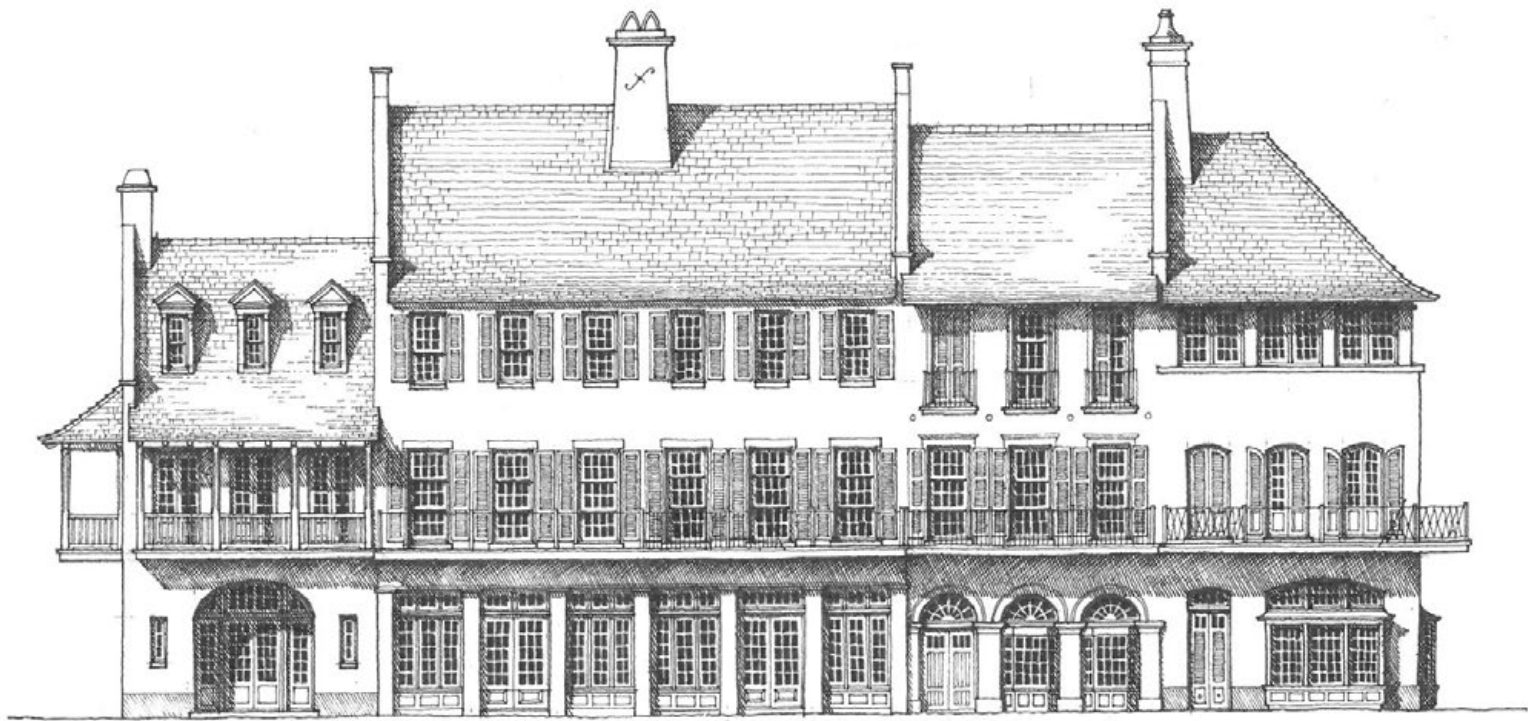


*Cooper Johnson Smith  
architects & town planners*

*Village Green Elevation*

0 1 10 20

*November 15, 2012*



POINTE-MARIE VILLAGE  
ARTIST COLONY TOWNHOUSES



COOPER JOHNSON SMITH  
ARCHITECTS & TOWN PLANNERS



*Cooper Johnson Smith  
architects of town planners*

*70' Cottage Lot Elevation*  
0 1 5 10 15 20

*Pointe Marie Village  
Baton Rouge, Louisiana*

COOPER JOHNSON SMITH  
ARCHITECTS & TOWN PLANNERS





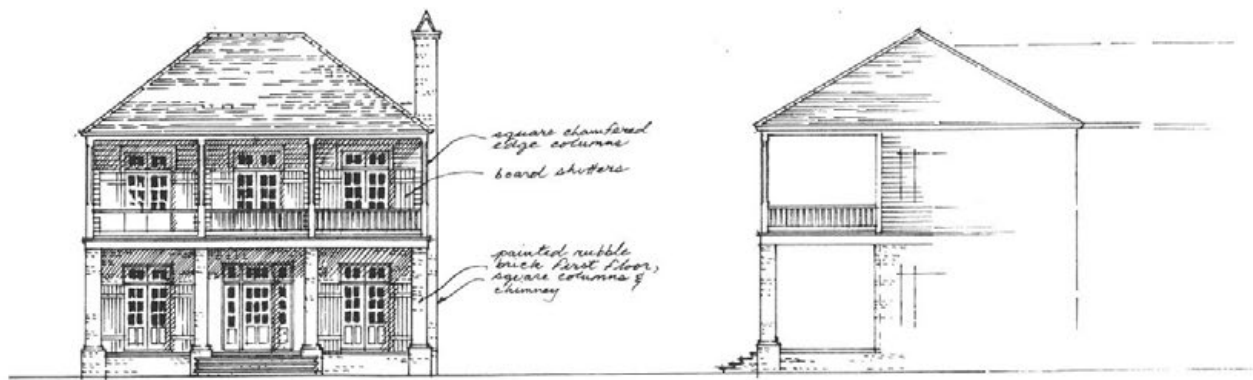
*Cooper Johnson Smith  
architects & town planners*

*70' Cottage Lot Elevation*



*plate 2*

*Ponte Marie Village  
Baton Rouge, Louisiana*

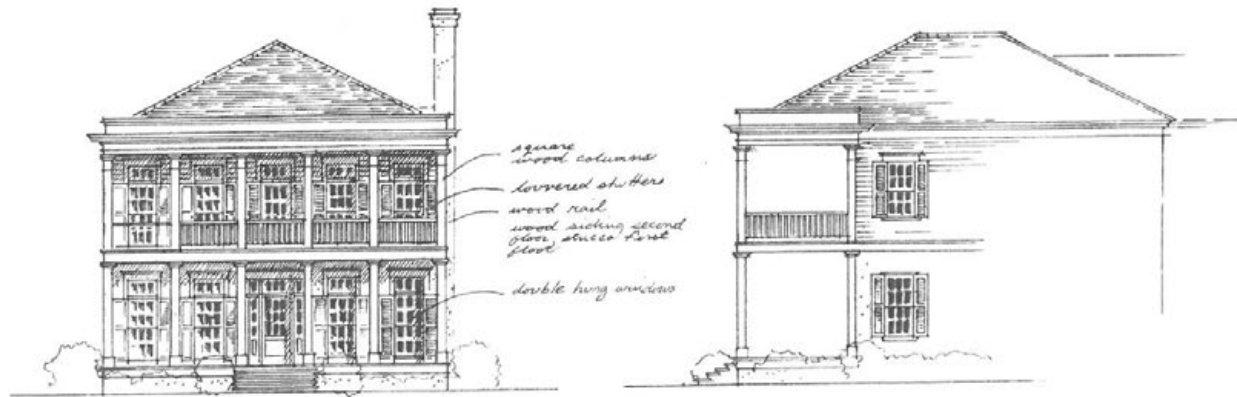


Creole  
 2A. Acadian Cottage  
 (painted copper)  
 Pleasant View  
 Plantation House  
 influenced

0 5 10 20  
 3/32

Side

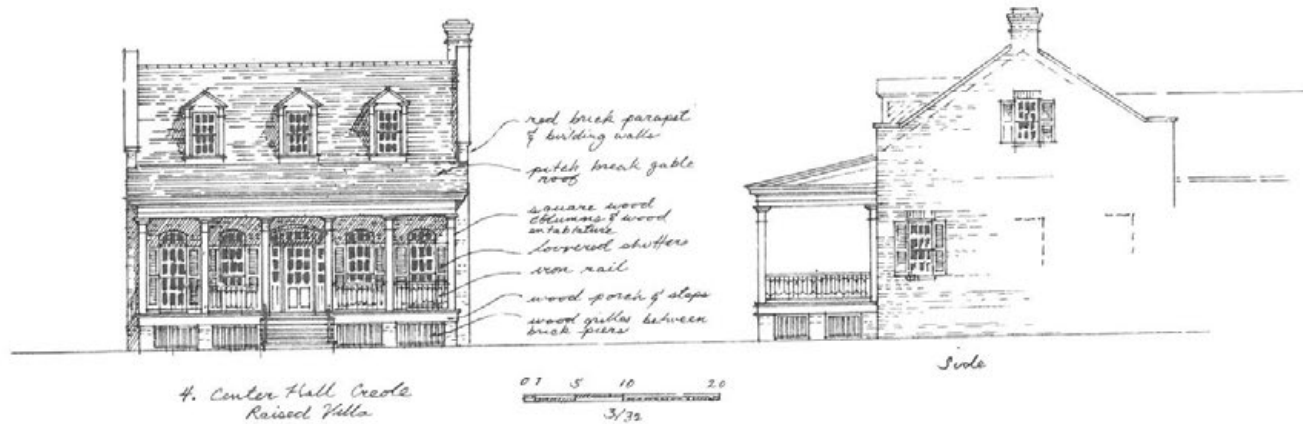
of rock



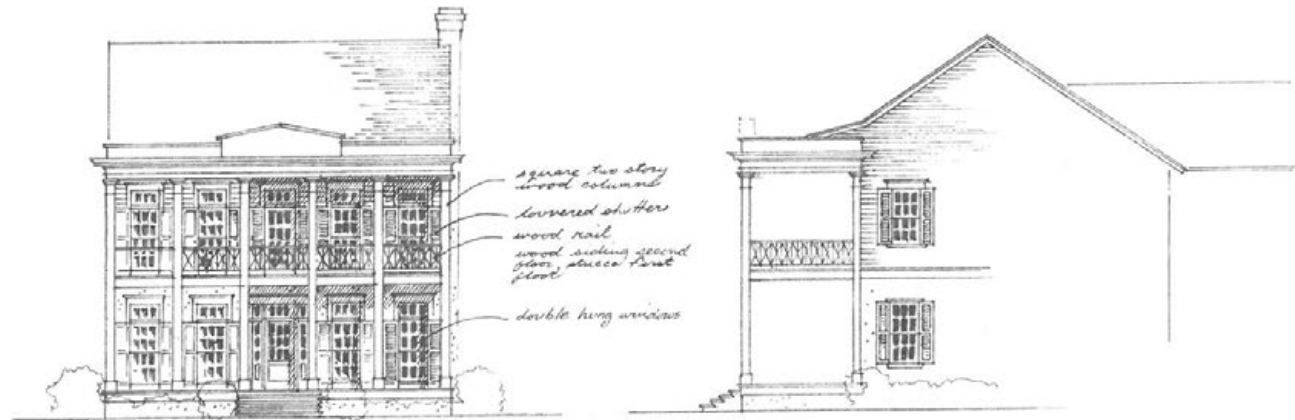
5. Double Gallery House  
American Townhouse  
(garden district)



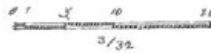
Side



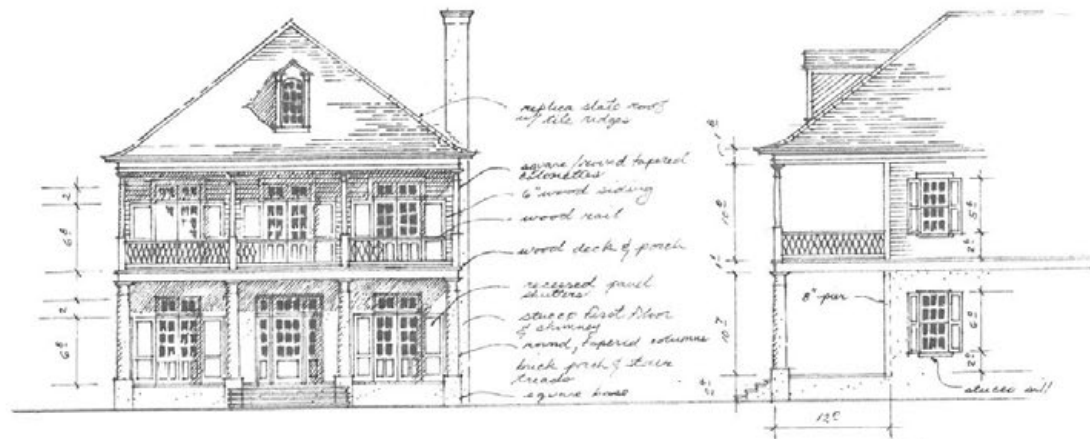
of each



3. 3 bay  
Villa  
(garden district)

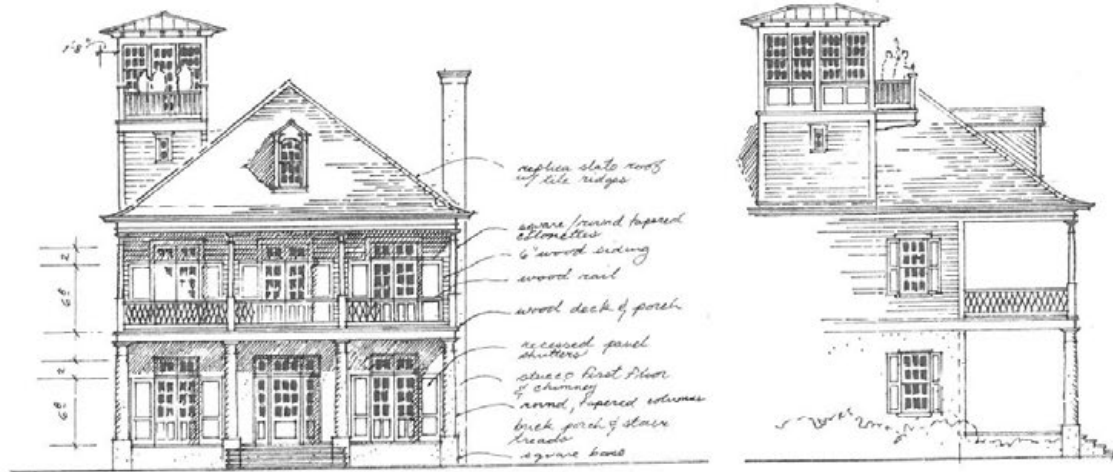


Side



1. French Creole cottage  
 Petite Creole  
 (Lakeland House  
 influenced)

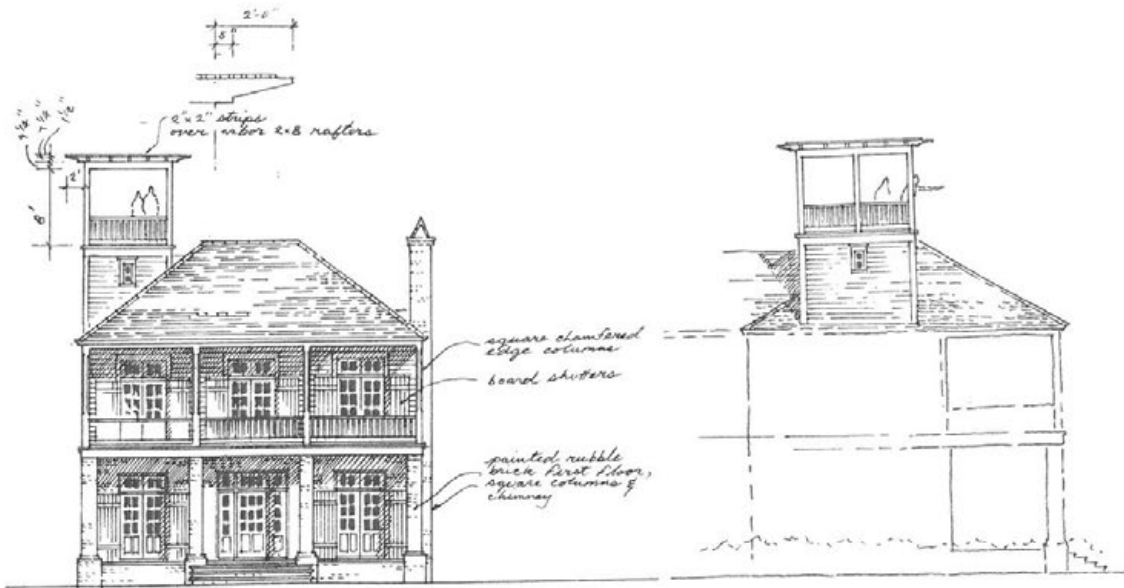




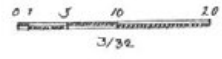
with tower  
1. French Creole cottage  
Pointe Coupee  
(Labatut House)  
influenced

0 5 10 20  
3/32

Side



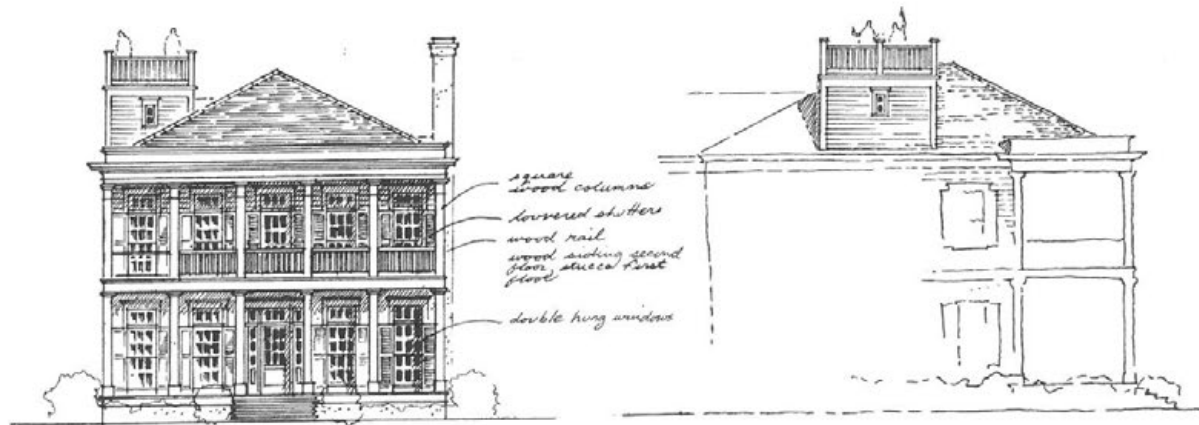
w/ arbor tower  
 Creole -  
 2nd Acadian Cottage  
 (private house)  
 Pleasant View  
 Plantation House  
 influenced



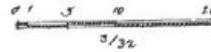
Side



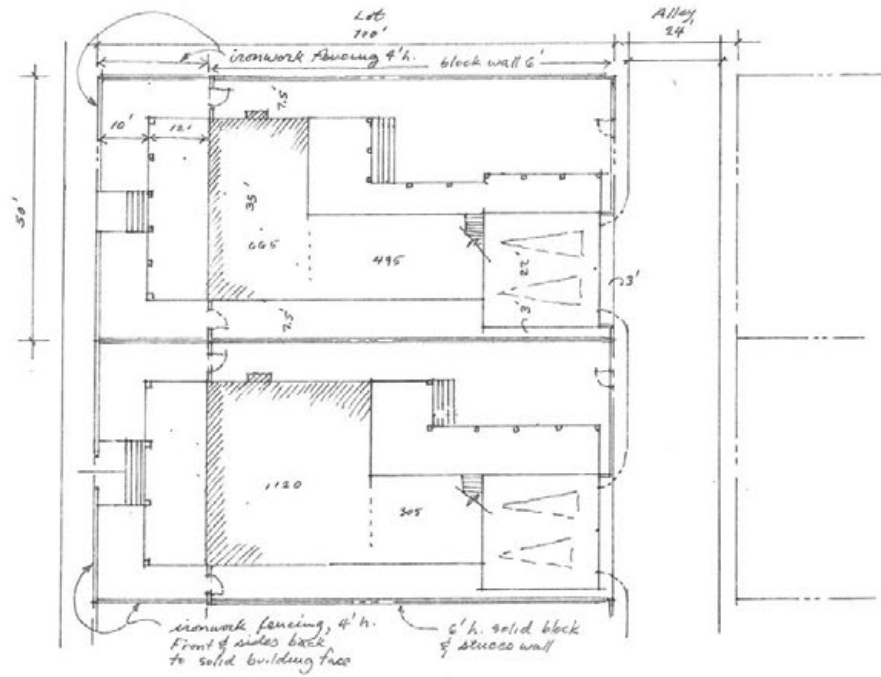
of each



with window walk  
S. Double Gallery House /  
American Townhouse  
(garden district)



Side





*Sample Houses*



COOPER JOHNSON SMITH  
ARCHITECTS & TOWN PLANNERS

POINTE-MARIE

ARCHITECTURAL SKETCH BOOK

MOTOR COACH RESORT

MOTOR COACH RESORT



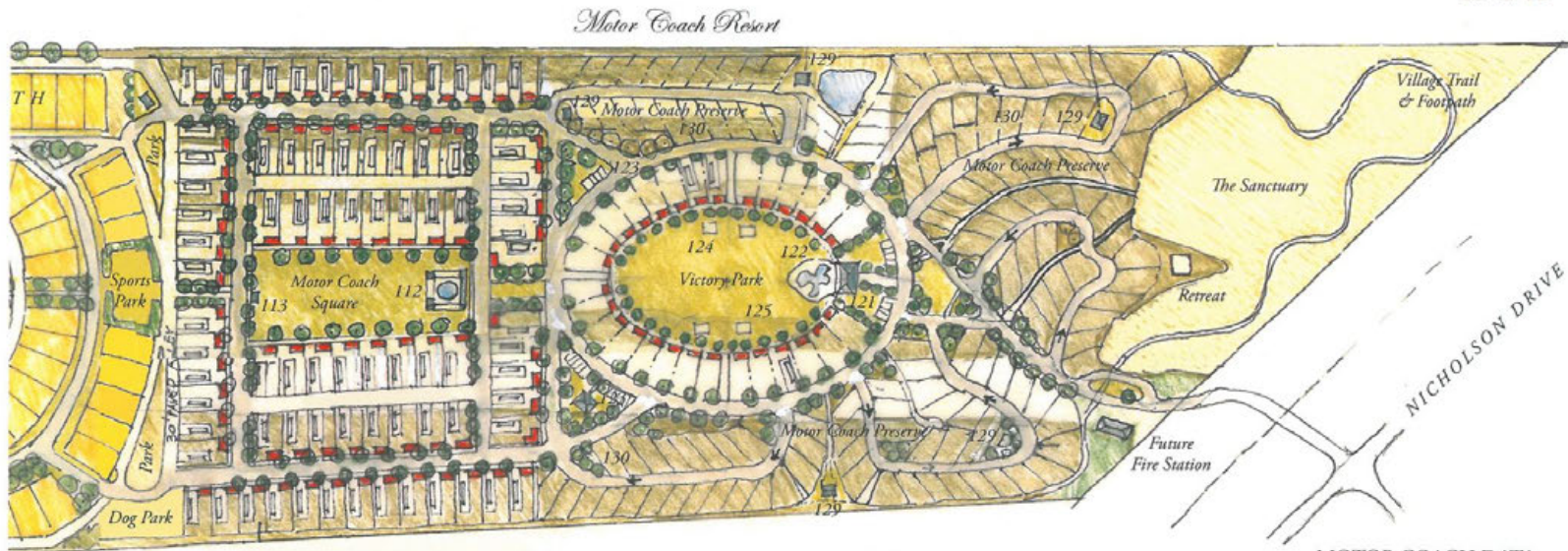
MOTOR COACH RESORT  
*Pointe-Marie Village Plan*  
BATON ROUGE, LOUISIANA

SCHEME "G+"



SCALE: 1"=200'

12-11-12



MOTOR COACH DATA

MC Square	80 lots (50'x100')
Victory Park	28 lots (95' deep)
MC Preserve	128 lots (40'x65')
Total:	236 lots



*Victory Park Clubhouse*

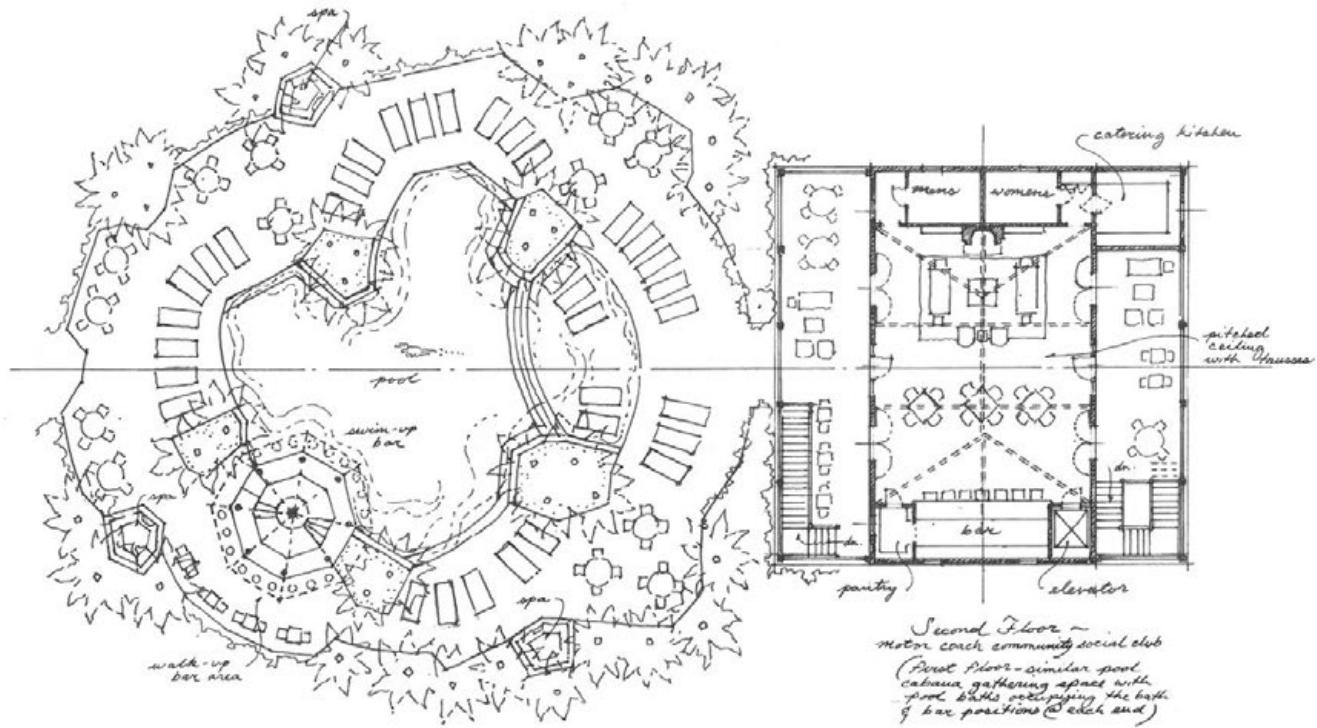
*Pointe Marie Village  
Baton Rouge, Louisiana*

*Cooper Johnson Smith  
architects & town planners*

*Victory Park Elevation*

0 10 20

*December 27, 2012*



Cooper Johnson Smith  
 architects & town planners

Site and Second Floor  
 Building Plan  
 Victory Park Clubhouse  
 0' 10' 20'

Pointe Marie Village  
 Baton Rouge, Louisiana





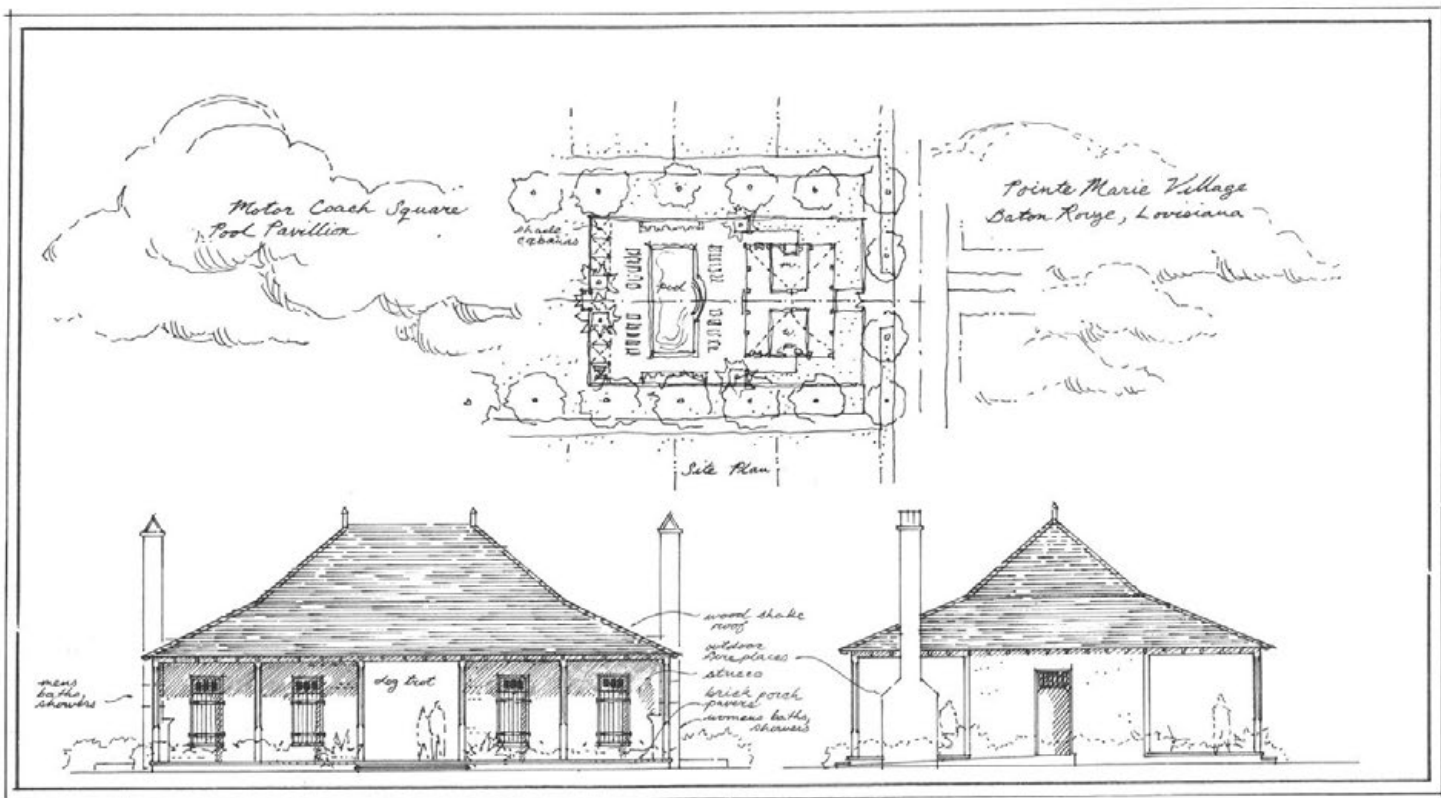
Cooper Johnson Smith  
architects & town planners

Poolside Elevation



Side Elevation

January 10, 2012



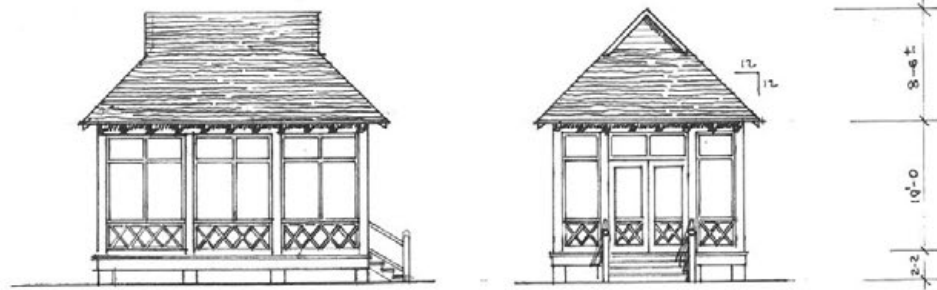
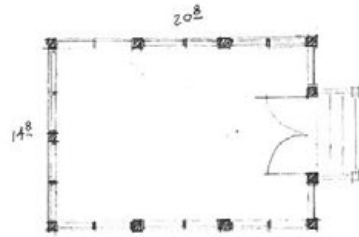
Cooper Johnson Smith  
architects & town planners

Poolside Elevation

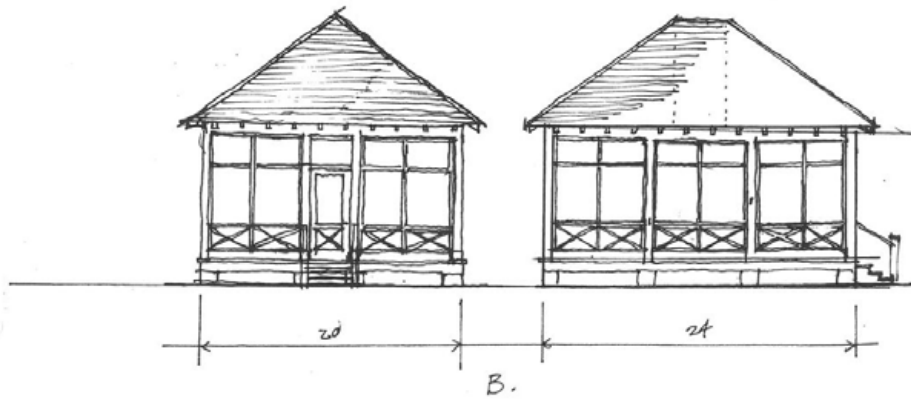
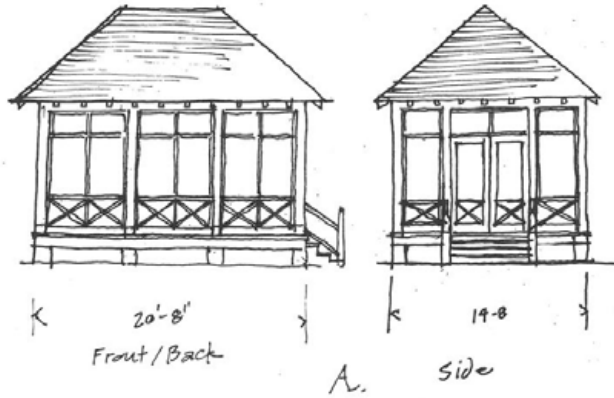
0 10 20

Side Elevation

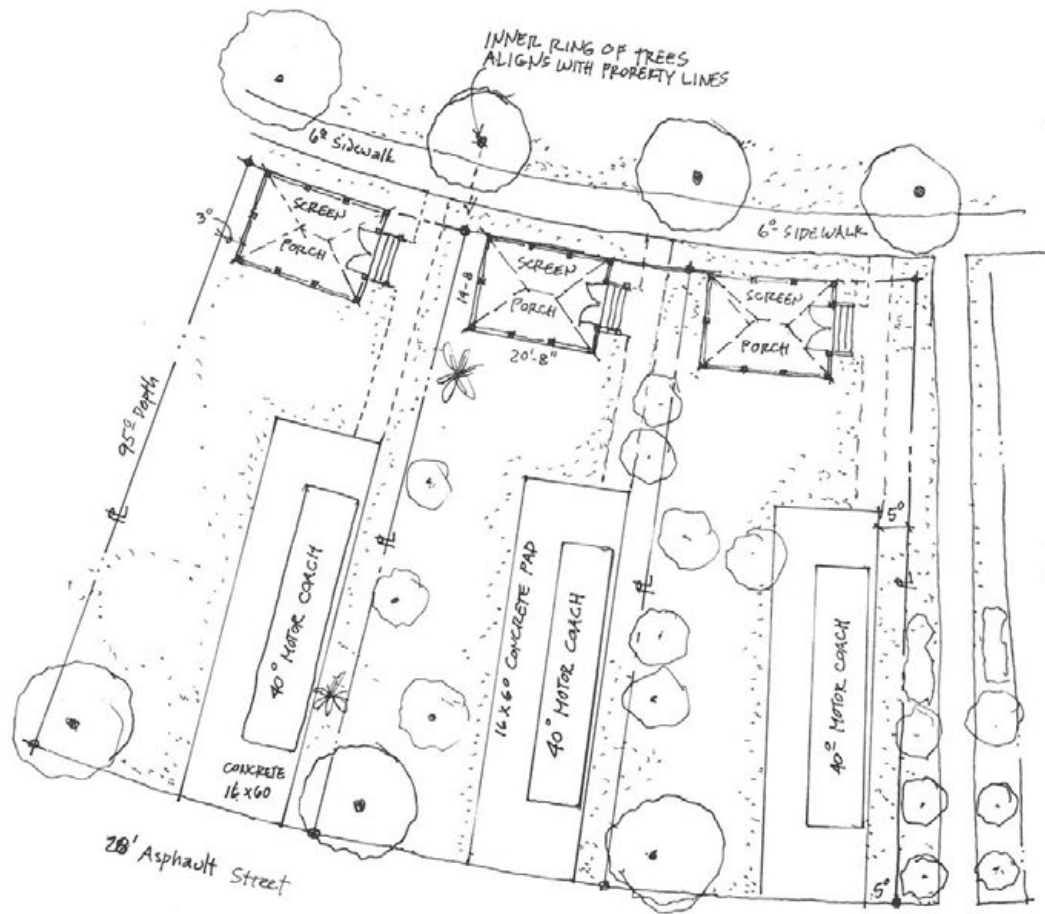
January 10, 2012



MOTOR COACH SCREEN PAVILION



MOTOR COACH  
SCREEN PORCH PAVILIONS



MOTOR COACH ELLIPSE

SITE PLAN

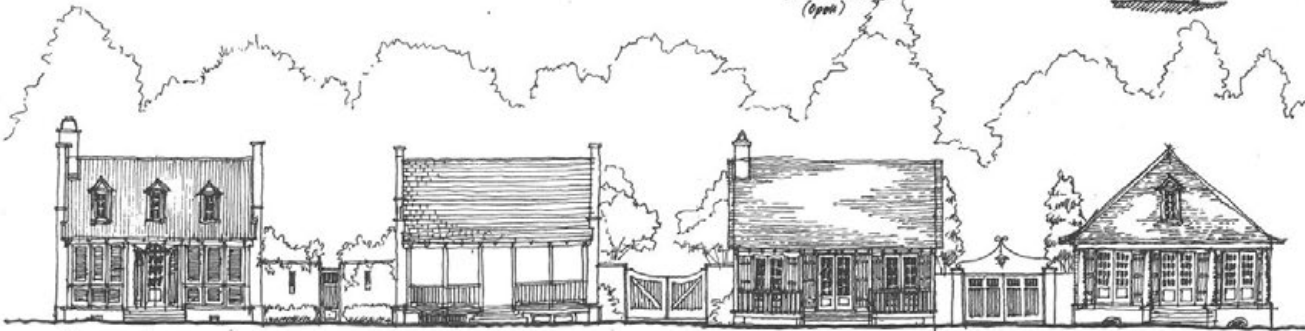


3 Cabana

2 Open Outbuilding  
(Open)  
Gaffe

1 Gable Cottage  
(Hipped)

6 Irons Cabinet House  
(Arched)



1 Wilson Charles Cottage  
1 1/2 story

2a Open Gallery

4 Hickory Cottage

5 Rural Gable Cottage

Broad Front  
Gable Roof  
(Peasapod)

Broad Front  
Gable Roof

Narrow Front  
Hipped Roof

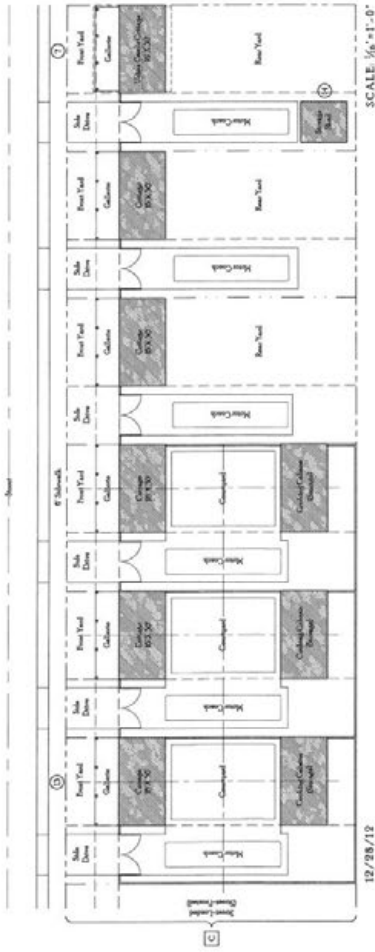
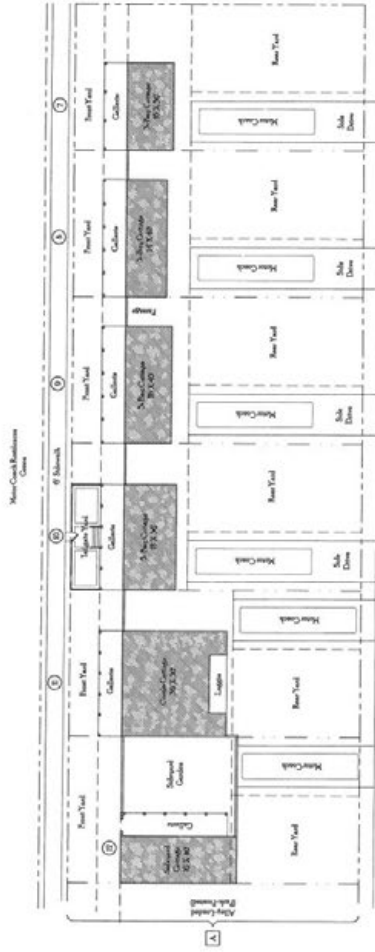


12-7-12

POINTE-MARIE VILLAGE  
*Motor Coach Cottages*  
PAVILIONS - GALLERIES - GUEST COTTAGES

12-28-12

SCALE: 3/32"=1'-0"



SCALE: 1/8" = 1'-0"

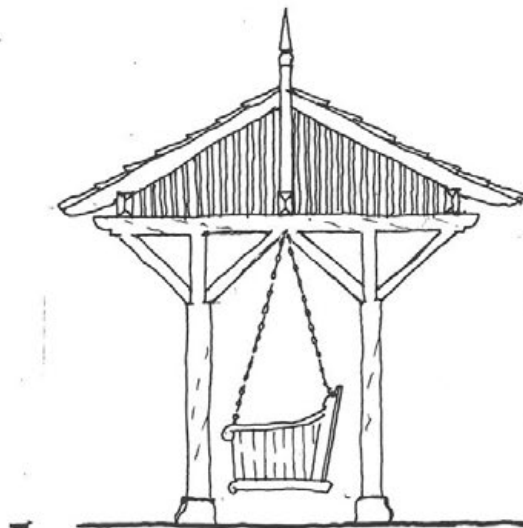
12/28/12

POINTE-MARIE VILLAGE  
*Motor Coach Cottages*  
 GROUND FLOOR FOOTPRINTS  
 1-STORY PAVILIONS & COTTAGES  
 ALLEY-LOADED MOTOR COACH DRIVES & PADS  
 30'x45', 30'x45', 30'x100' LOTS  
 10'x24' PAVILIONS, 30'x30' COTTAGES



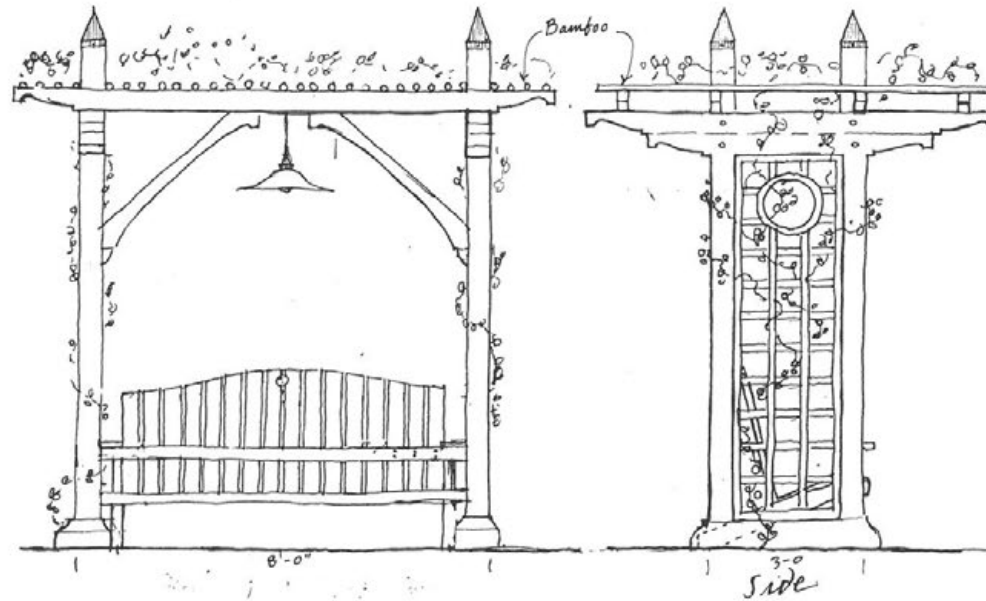
COOPER JOHNSON SMITH  
ARCHITECTS & TOWN PLANNERS





B.

*Victory Park Swingin' Tram Stop*



Trellis Bench

POINTE-MARIE VILLAGE  
ARCHITECTURAL  
SKETCHBOOK



RESORT - MIXED-USE - RESIDENTIAL - COMMERCIAL - SCHOOL - CHURCH

COOPER JOHNSON SMITH  
ARCHITECTS & TOWN PLANNERS