



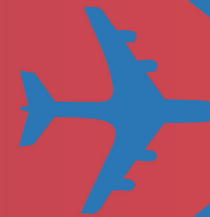
**BTR**

BATON ROUGE  
METROPOLITAN AIRPORT

# District 2 Metro Councilwoman Chauna Banks and the Baton Rouge Metropolitan Airport

*Welcome you to the*

**Community Open House**



# What is this Project?

## Environmental Assessment of Runway 13-31 Runway Safety Area and Runway Protection Zone Improvements

### → The Purpose

- Improve airfield facilities and safety so that the Baton Rouge Metropolitan Airport may continue to serve as a regionally competitive, origin-destination airport for passenger aircraft operations

### → The Need

- Existing Engineered Materials Arresting System (EMAS) for Runway 13-31 Runway Safety Area have reached the end of their useful life and either need to be replaced or improved to continue to provide sufficient safety for that runway
- Gain ownership and control of the Runway Protection Zone to meet new FAA standards



**BTR**

BATON ROUGE  
METROPOLITAN AIRPORT

# Process

## Environmental Assessment

- Prepare Scientific Analysis
- Identify Land Acquisition and Relocation Costs
- Perform Traffic Analysis
- Establish Project Costs

## Benefit Cost Analysis

- Analyze total project costs
- Analyze project benefits

## Go or No Go

- Evaluate the project with the FAA based on the BCA
- Determine if project should move forward



**BTR**

BATON ROUGE  
METROPOLITAN AIRPORT

# Environmental Assessment Alternatives

- Relocation of Plank Road with Signalized Intersection
- Relocation of Plank Road with Overpass Option 1
- Relocation of Plank Road with Overpass Option 2
- Relocation of Plank Road with Roundabout
- Do Not Relocate Plank Road
  - Would require replacement of existing Engineered Materials Arresting System (EMAS)
  - Would result in Plank Road continuing to be located inside the Runway Protection Zone contrary to new FAA standards



**BTR**

BATON ROUGE  
METROPOLITAN AIRPORT

DRAFT



Existing Road Layout

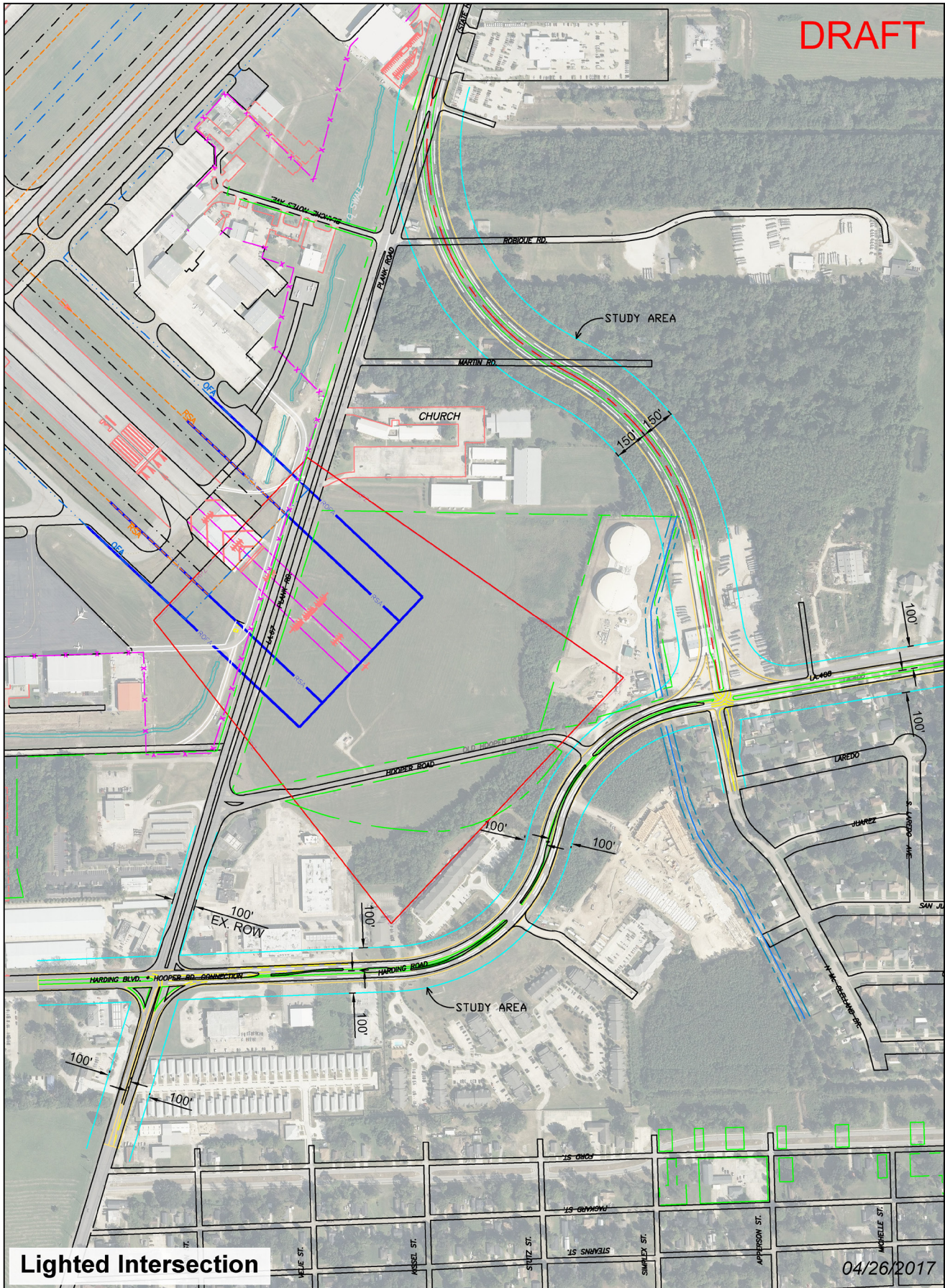
04/26/2017

# Environmental Assessment

## Runway 13-31 RSA and RPZ Improvements



DRAFT

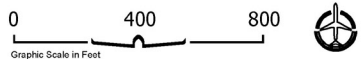


Lighted Intersection

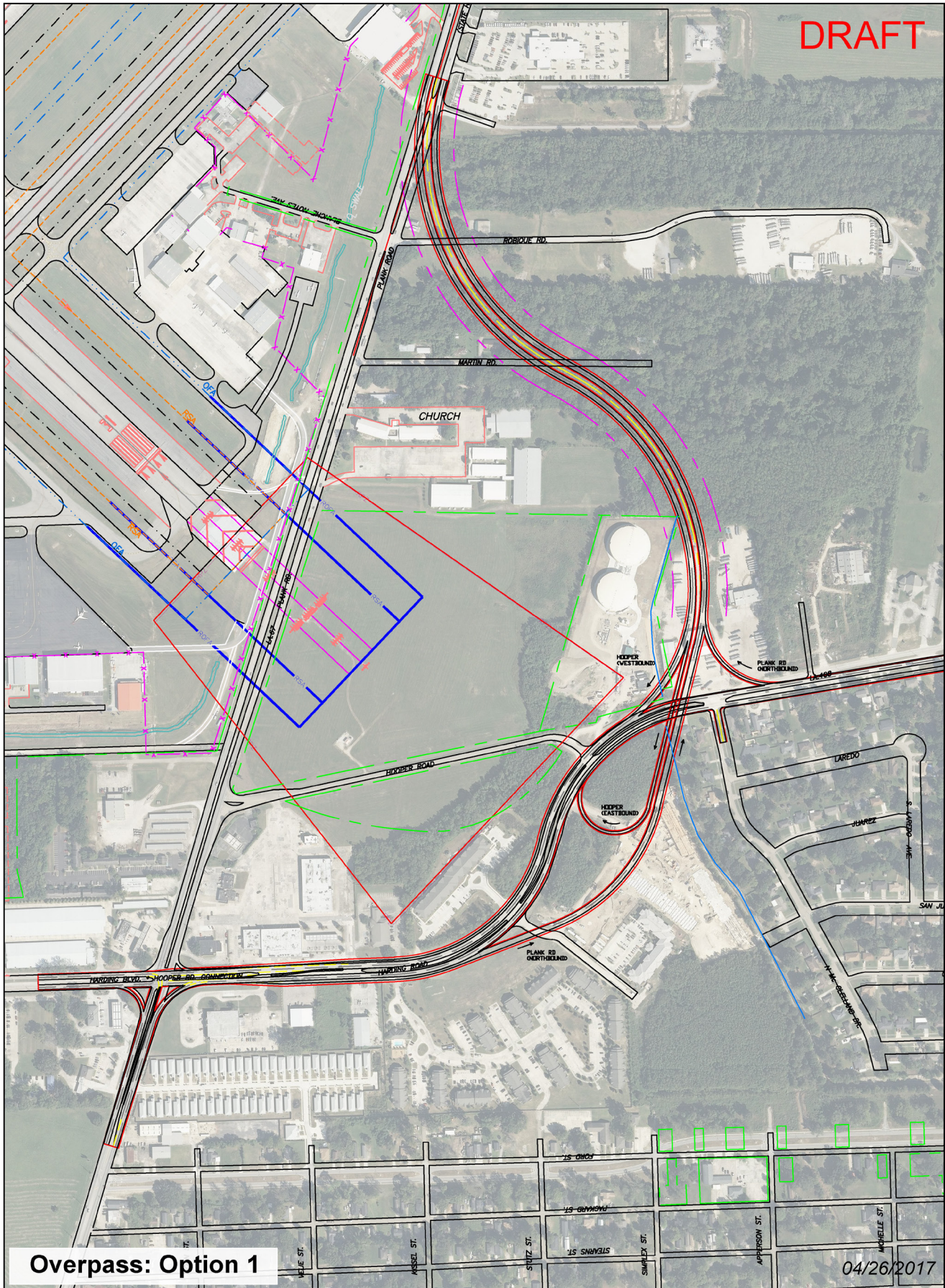
04/26/2017

# Environmental Assessment

## Runway 13-31 RSA and RPZ Improvements



DRAFT

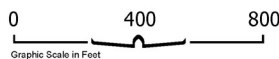


Overpass: Option 1

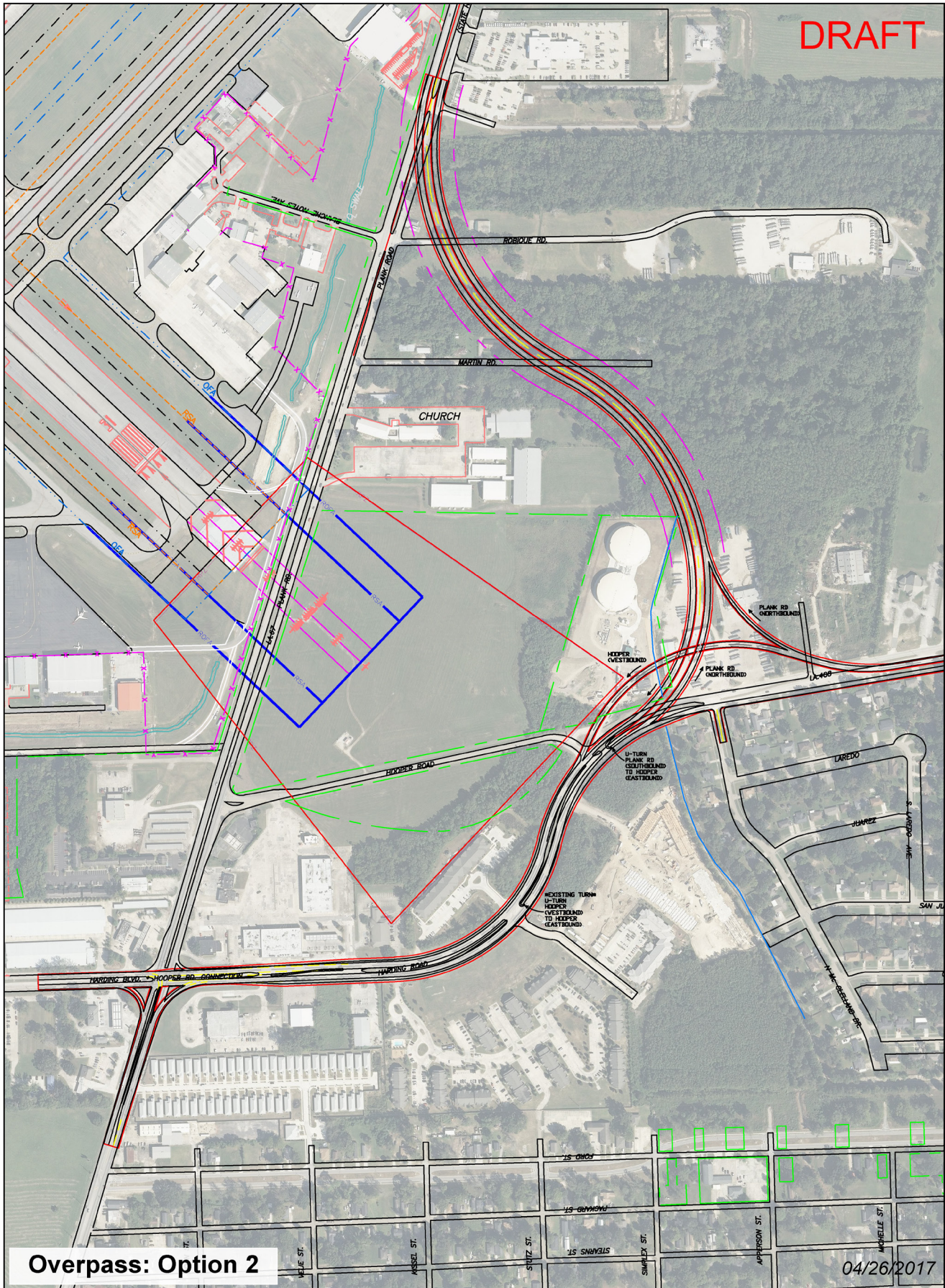
04/26/2017

# Environmental Assessment

## Runway 13-31 RSA and RPZ Improvements



DRAFT



Overpass: Option 2

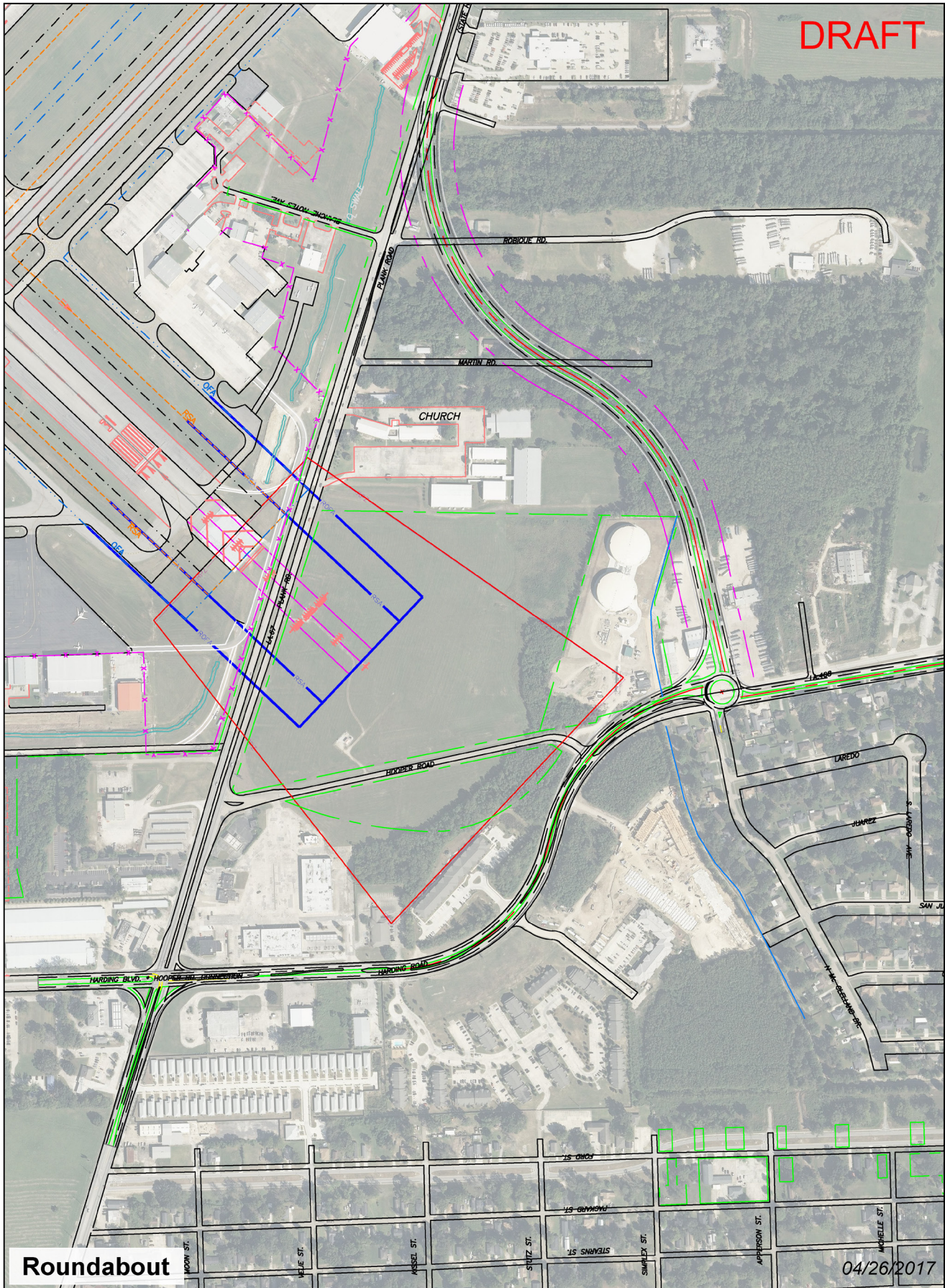
04/26/2017

**Environmental Assessment**  
 Runway 13-31 RSA and RPZ Improvements





DRAFT

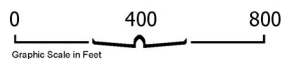


Roundabout

04/26/2017

# Environmental Assessment

## Runway 13-31 RSA and RPZ Improvements



# Next Steps

- Complete Traffic Studies
- Scientific Investigation of Environmental Areas
- Finalize Cost Estimates
- Prepare Benefit Cost Analysis
- Prepare Draft Environmental Assessment for Agency and Public Review
- Federal Aviation Administration issues determination



**BTR**

BATON ROUGE  
METROPOLITAN AIRPORT

# We want to hear from you!

- ➔ Please take a moment to provide us with your comments and input
- ➔ You can leave your comments tonight or send them to us later
- ➔ For more information, visit [www.FlyBTR.com](http://www.FlyBTR.com)



**BTR**

BATON ROUGE  
METROPOLITAN AIRPORT