



How to create a **BENEFIT ESTIMATE** in *myTRSL.org*

Complete your benefit estimate with these simple steps on *myTRSL.org*.

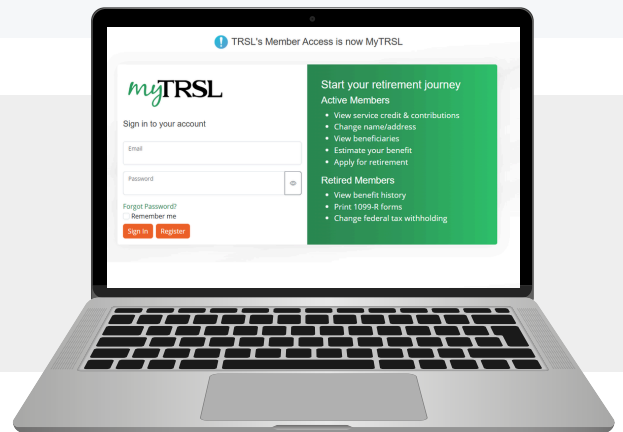
These tools are for members who have at least five years of service credit and have not entered DROP. Your estimate will include all retirement benefits you are eligible for on your chosen retirement date.

Don't yet have five years of service credit? You can use the calculator under "My Estimates." Just click on "Estimate Your Retirement Benefit."

Log into *myTRSL.org*

1

Go to *myTRSL.org* and enter your login credentials to access your *myTRSL* dashboard.



Click on "My Estimates Tab"

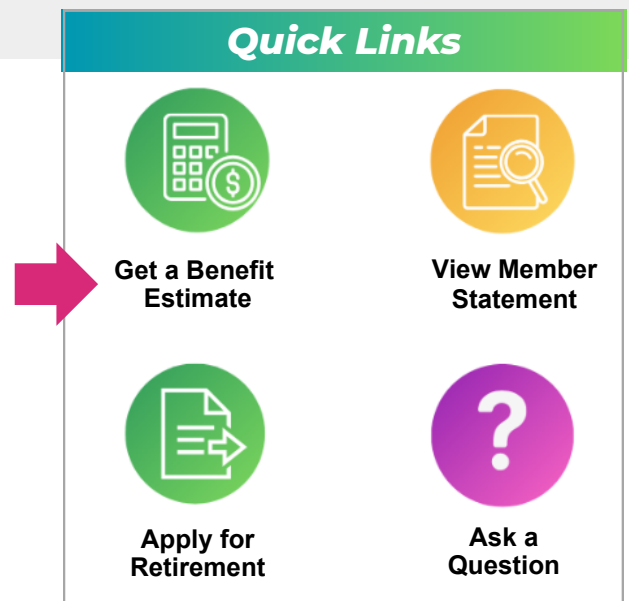
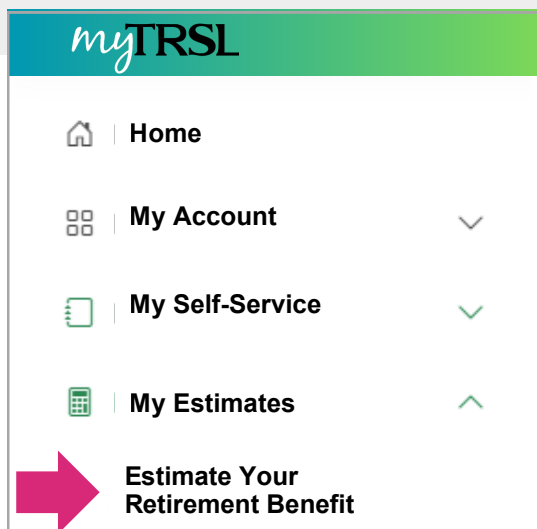
2

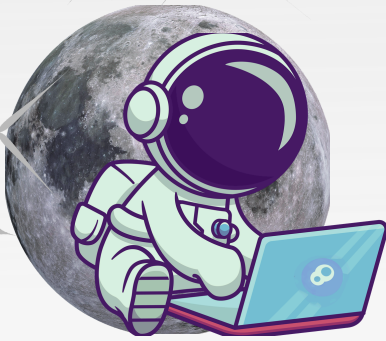
Once logged in, select "Estimate Your Retirement Benefit," under the "My Estimates" tab.

or

Select "Get a Benefit Estimate"

Under the "Quick Links" section, select "Get a Benefit Estimate" from the *myTRSL* dashboard.





How to create a **BENEFIT ESTIMATE** in *myTRSL.org*

View benefit estimate on your dashboard

- 3** Your dashboard in myTRSL includes your projected retirement eligibility and benefit estimate. Click on “View Details” for even more information.

Map Your Road to Retirement 

Projected Retirement Eligibility and Benefit Estimate [View Details](#)

Scenario	Fiscal Year of Eligibility	Age	Maximum Monthly Benefit Amount
Early Retirement	2031 - 2032	56	\$1,984.00
Regular Retirement/DROP Eligibility	2035 - 2036	60	\$3,238.00

These estimates are based on information as reported by your employer(s) as of 6/30/2025 and assume continuous TRSL-covered, full-time employment.

HAVE QUESTIONS?

Contact our **HelpDesk** for additional assistance.

Email: helpdesk@trsl.org

Phone: 225-925-6460