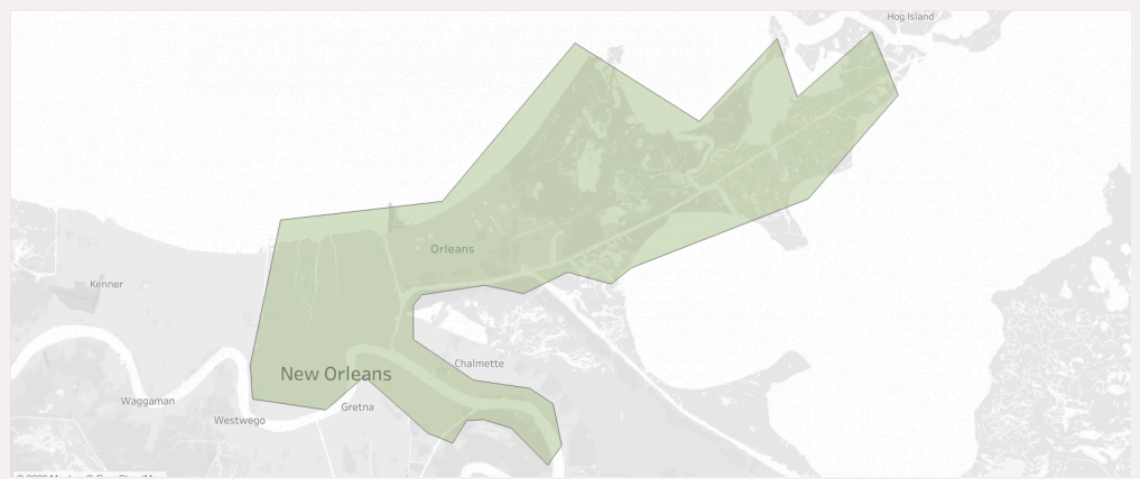
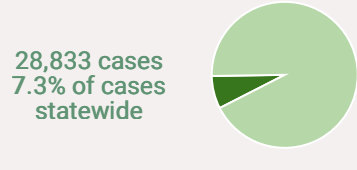
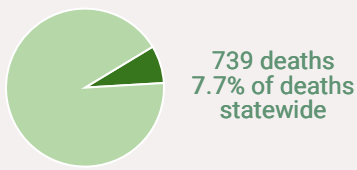


*Testing data for week of 5/18-5/24

COVID-19 Orleans Parish, LA



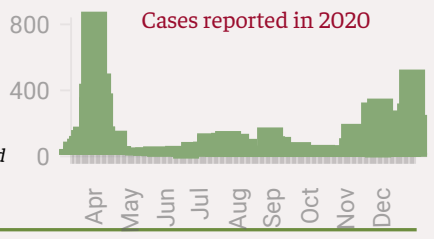
Orleans Parish ranks #2 in deaths and #3 in cases statewide



Orleans Parish Risk Level

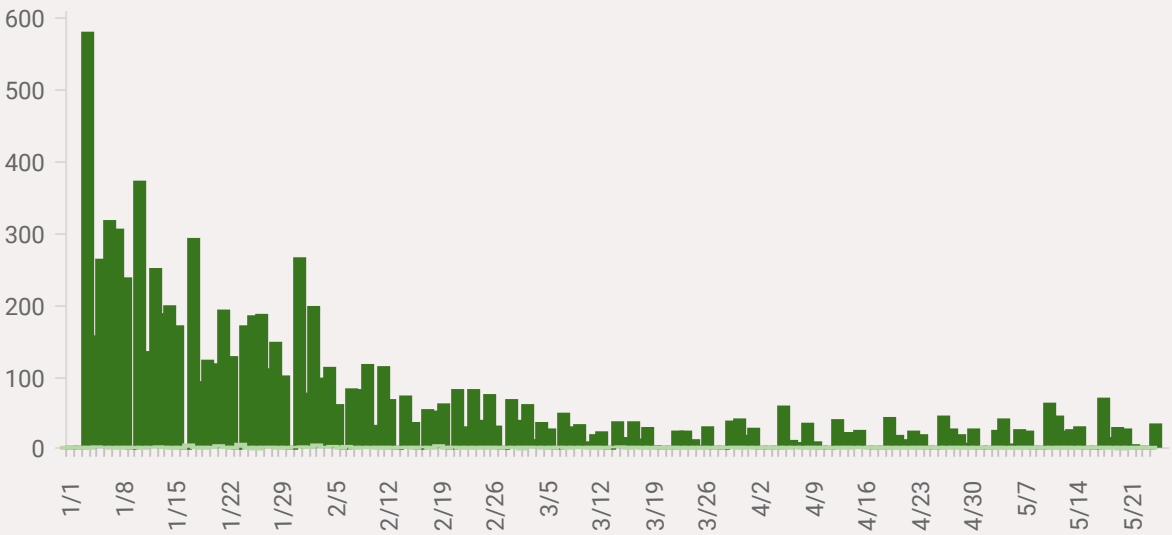
High

This risk level is provided by the New York Times and is based on cases per capita and test positivity.
<https://www.nytimes.com/interactive/2021/us/covid-risk-map.html>



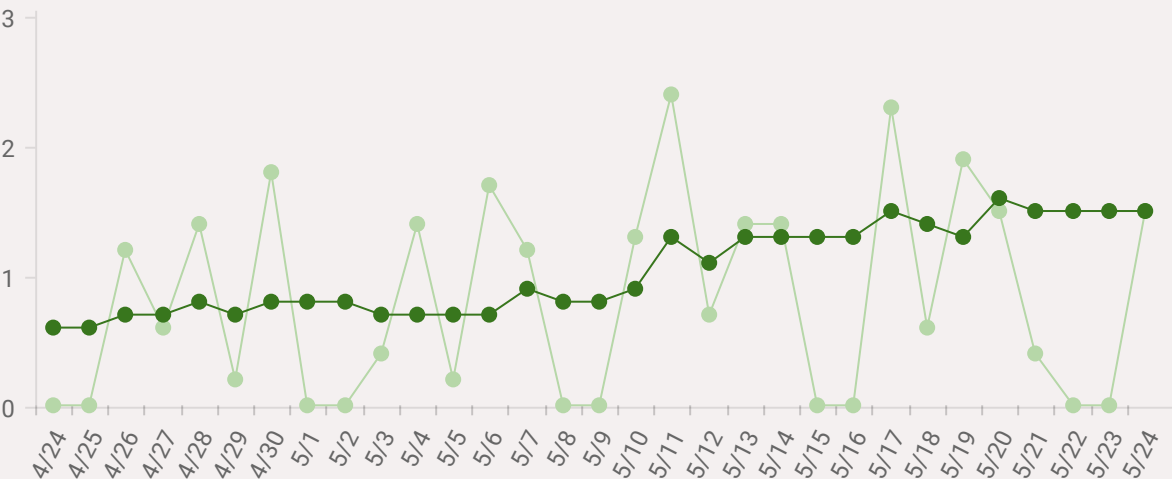
Cases and Deaths in Orleans Parish, 2021

● New Cases ● New Deaths



Test Positivity in Orleans Parish, 4/24-5/24

● Daily Positivity Rate ● 7 Day Rolling Average



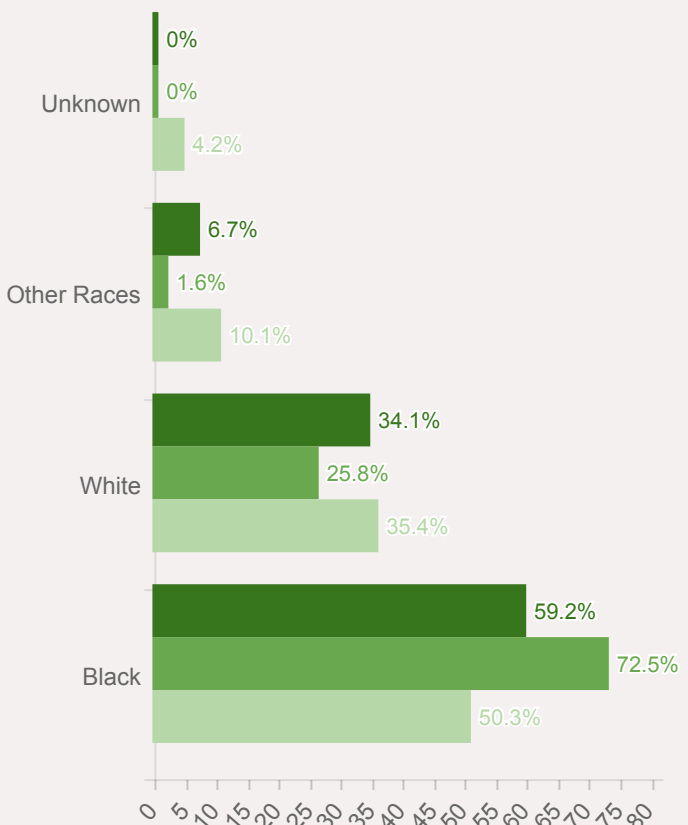
COVID-19 risk is not equal for all people in New Orleans

A Black person in New Orleans is

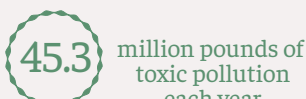
1.6 TIMES

more likely to die from COVID-19 than a White person

● % of Population ● % of COVID-19 Deaths ● % of COVID-19 Cases



The New Orleans Metropolitan Area is home to



Exposure to air pollution is linked to increased risk of death from COVID-19

