



# The Pelican Express

Let Go...Let God

MAY 20, 2021

## DATES FOR YOUR PLANNER

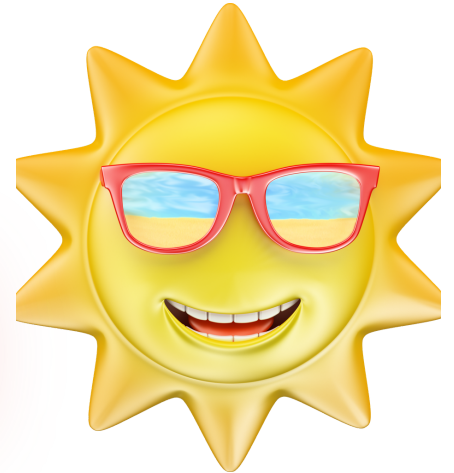
May 21 - Report Card Day

May 21-June 4 - School Campus is closed

June 6 - deadline to order school supplies

June 10 - Used Uniform Sale (St. John Room of Church Office)

June 21`-25 - Vacation Bible School (Early Learning Center)



# SUMMER READING

Click [here](#) for information about Summer Reading

## IOG = Identified Offertory Giver

Where are you on your IOG contributions to MBS Parish?  
In-Parish Tuition is granted to those who fulfill the IOG requirements year to year and complete service hours.

Click [here](#) to print the auto debit form.

Bring the completed form and voided check to  
the Church Office.

You can also drop it in the weekly collection basket.

Church Office hours:

Monday-Thursday: 8:00am-3:30pm (closed 12-1 daily)

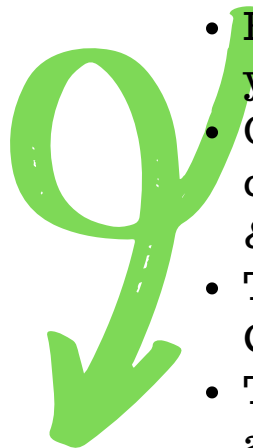
Monday: 8:00am-12:00pm

# FREE MEALS

The USDA has extended the Free meals program through next school year (2021-2022). All students participating in the Child Nutrition Program will continue to receive Free meals (Breakfast, Lunch & Supper) through the end of May 2022.

## Time to Order School Supplies for 2021-22

- Visit the link [here](#).
- Enter School ID: MOS012
- Follow the steps to select your student(s) grade level.
- Once the item is added to the cart, enter the student's first & last name.
- Then CheckOut with a Credit Card.
- The shipping address is already set to MBS.
- Grade 6 already includes the scientific calculator.
- If your Middle School student has lost his/her calculator, you may order a new one separately for 7th or 8th grade.
- Deadline is 6/6 - no late orders accepted.
- If you chose to buy the supplies on your own, you can click on the grade and see what items are required.
- There is NO CONTACT PAPER available this year through the vendor. Buy yours now!! Remember how everyone sold out in August, and we couldn't find any?!



**EPI** 2021-2022 SCHOOL SUPPLY PACKS  
**SHOP NOW**  
**Sale Ends: 6/6**  
Save Time & Money on School Supply Shopping this Year  
**ORDER ONLINE**  
[www.EducationalProducts.com/ShopPacks](http://www.EducationalProducts.com/ShopPacks)  
Enter Our School ID: **MOS012**



# used uniform SALE



## Drop off

Tuesday, June 8th &  
Wednesday, June 9th  
5:30-6:30 pm

## Sale

Thursday, June 10th  
5:30-7:30 pm

St. John Room, MBS Church

## How to BUY

- Each item will be labeled with a name and a price.
- If you wish to purchase the item, you are to place **CASH ONLY** in the envelope.
- Unfasten the envelope and give to the Volunteer at the Sale.

## How to Sell

- Each item should have a white envelope attached with a Safety Pin.
- On each envelope, put
  - your last name,
  - size of the item,
  - and the amount you are selling the item for.
- Drop off the items during "Drop Off" days/times shown above.
- If you cannot make the Drop Off Time, please text Angelique Wimberly at 225.368.7680.
- All unsold items and cash can be picked up after the sale.
- All unclaimed items will be donated to Home & School.





Uniforms • Backpacks • Accessories  
Educational Toys & Games

In May and June, earn \$5 in School Time Bucks for every \$100 spent at School Time!  
Plus, get DOUBLE bucks in May!

Redeem your School Time Bucks from October through December. See a store associate for further details.



**Don't miss our big Back to School Sale in June!**  
Get 10% off every in-store or online purchase all month.

# Most Blessed Sacramento School

Your school's special uniform sale day is  
**Monday, June 28, 2021**

**Get 15% off of your entire purchase and free shipping on every order!**

Shop in-store or use online code: **PELICAN1**



Doesn't fit? We allow returns and exchanges even when logos are on your items. We also offer in-store layaway!

7745 Jefferson Hwy. | Baton Rouge, LA | (225) 926-5371

**WWW.SCHOOLTIMEUNIFORMS.COM**

Uniforms • Backpacks • Accessories • Educational Toys & Games

**We offer exchanges and returns within 90 days!**

# Piety Awards

Sadie Martin	Declan Parsons
Ainsley Freeman	Evan Wright
Emma June Spencer	James Kidd
Emma Thompson	Luke Gommel
Brynn Lott	Jayden Arion
Isabell Nguyen	Jack Johnson
Madeline McArdle	Asher Michelli
Brooke Berry	Lincoln Short
Lexi Montelepre	Justin Davis
Avery Gautreau	Blaise Lato
Brenna Tricou	Cole Johnson
Katherine Betbeze	Benjamin Procell
Blakeley Keagle	Maddox Watson
Caylee Milazzo	Santiago Castillo
Bella Bravata	Max Johnson
Gia Link	Parker Branigan
Amelia Jane Meng	Luke Boykin
Mary Charlotte Edwards	Nash Landry

# Citizenship Awards

Emily Roubique	Preston Marino
Lucy Nizzo	Preston Matto
Charlee Brouillette	Connor McArdle
Ellie Fox	Abram Millet
Hayden Watson	Noah Pacosz
Audrey Davis	Everett Authement
Marian Duet	Joseph Leier
Arden Ehlers	Carter Fuller
Kinslie Bouquet	Brant Wright
Riley Daigle	William Arceneaux
Allie DeBarbieris	Ethan Fox
Maddison	Gabriel Rico
Waguespack	Luke Kimble
Suzanne Ash	Jordan Fox
Marielle Gary	Payton Dawson
Giulia Arion	Brady Boyles
Gianna Jacomine	Jack Larriviere
Katie Richardson	Jaxon Fontenot
Lucia Rico	



# OFFICE OF CHILD PROTECTION

According to the Safe Environment Policy mandated by the Diocese of Baton Rouge, all parish and school ministry volunteers/chaperones must complete a mandatory background check and child protection training.

Please note that MBS School child protection requirements are not the same as MBS Church Parish. Therefore, if you are compliant for one, you are not automatically compliant for the other.

Child Protection credentials allow the holder of these credentials the opportunity to chaperone/volunteer at MBS Parish or School. All credentialed adults must abide by the sign-up and confirmation process for each event.

Please be aware that many files have been closed due to inactivity, and/or files not being updated.

Please contact Mrs. Landry at 225-753-5526 or [childprotection@mbsbr.org](mailto:childprotection@mbsbr.org) for assistance with child protection credentials.



## Do you shop on Amazon?

By adding Most Blessed Sacrament as your "Charity of Choice," a portion of your shopping total goes to MBS.

- Go to <https://smile.amazon.com/>
- Save ^^ that link as the URL to shop on
- Items with AmazonSmile Logo qualify.
- Your prices don't change and 0.5% of your price goes to MBS
- \$1141.63 has been donated to MBS through March 2021
- Click [here](#) for more information.

**amazon**smile  
You shop. Amazon gives.



St. Michael High School Campus Ministry will be hosting at **Summer Faith Camp**.

The camp will be directed by Campus Minister, Emily Froeba.

Check out the information below and attached flyer!

WHAT: Faith Camp at St. Michael High School with Two Tracks:  
Children (1st-5th grade) and Junior High (6th-8th grade).

WHEN: July 5-9 with two tracks/times

Children entering 1st-5th grade – 9:00am-12:00pm

Junior High entering 6th-8th grade – 1:00 – 4:00pm

COST: \$125 for an amazing week of education and fun!

WHAT TO EXPECT: A ton of fun traveling through the story of scripture and learning the whole story of God's promises to his people. Games, crafts, prayer, snacks, music, and more!

For more information contact - Emily Froeba [efroeba@smhsbr.org](mailto:efroeba@smhsbr.org)

Register at <https://www.smhsbr.org/campus-life/summer-camps/>

.....

**Do you have some Alumni News to share with us?**

**Email to Penne at [PLeier@mbsbr.org](mailto:PLeier@mbsbr.org)**

**We love to follow our Pelicans who have flown from the nest!**

.....



COUNSELOR'S

CORNER

**When: July 19-23  
Monday - Thursday**

**Time: 9am - 12pm**

**Location: St. John  
Room**

**Price: \$150**

# STRATEGIES FOR SUCCESS: A SUMMER BOOT CAMP

A Study Skills class for students entering 5th - 8th grade



Time  
Management

Google  
Classroom  
Proficiency

Note Taking

Following  
Directions

Organization

Quiz/Test Prep

[Register Here!](#)

-space limited-



Led by Becca Muller (SCOOP Coordinator),  
Holly Wilder (Middle School Math), &  
Kylie Harbin (Middle School English)  
-Combined 73 years of experience-

Register For Summer Boot Camp  
by Clicking [Here](#)



For Children entering Kindergarten through 5<sup>th</sup> Grade  
(for the 2020-21 school year)

**ALL ABOARD!**  
On this Summer's  
Greatest Adventure



REGISTRATION:  
May 1 - May 18  
MBSparish.org

At Rocky Railway, children discover that Jesus pulls  
them through life's ups & downs.

The week will be filled with Scripture, games, drama, crafts, snacks,  
and a whole lot more!

#### ADULT VOLUNTEERS NEEDED

Please call Judy Carr  
225.335.6563

\$35 Registration includes:

- T-shirt
  - One music CD per family
- Registration Non-Refundable

HS TEEN VOLUNTEERS  
Apply online May 1-18  
Through VBS Registration

**Limited to 80 participants**

## Extended Care Help

Do you know a reliable person who is  
16 + older and

wants to help with our  
**Extended Care Program?**

*Work Details:*

Monday - Friday

2:45 - 6:00 pm

Must Be Good with Kids!

Ideal for high school kids, college students,  
or  
retired grandparents.

Contact Sheena Gauthier at  
[SheenaDukes@yahoo.com](mailto:SheenaDukes@yahoo.com)

**We are still in need of  
Adult & Teen Volunteers.  
Please register [here](#) to help!**



# Time & Talent Update

## **The following change has been made to the Parent/Student Handbook regarding Time & Talent (aka Service Hours):**

**Parent's Commitment to Church and School** One of the requirements for enrollment and/or retention at Most Blessed Sacrament Catholic School is a commitment to the following agreement.

×

- In addition to daily prayer at home, the Catholic members of our family will attend Mass every weekend and on Holy Days of Obligation.
- Twenty (20) hours of Time and Talent will be given to the school and/or Church each year. Hours must be completed between January 1 and December 31 to receive the in-parish tuition rate. These hours are reviewed each year.
- A minimum amount of \$325.00 will be donated to the Church to support the stewardship program as an Identified Offertory Giver (IOG). IOGs will receive in-parish tuition. Donations will be verified by December 15 unless otherwise authorized by the Pastor. Any offerings thereafter will count towards the following school year.

### **Definition of an Hour**

One (1) hour is defined as an actual hour of volunteer work or donation purchases of \$10.

### **New Students Clause**

Time and Talent hours are prorated for new students. However, new families must still meet the IOG requirement of \$325.00 to receive in-parish tuition.

### **Log your Service Hours into FACTS.**

**Go to Family > Family Home. You will see "Service Hours" in the middle of the screen. Click "add" to add the hours. You must type in a description. Select "type a custom value," and then type your description.**

### **Sending Items to School**

**Please label your items that you send to school from a SignUp Genius:**

- **Parent Name (signed up on the SUG)**
- **Name of item**
- **Title of Sign Up (ex: 5th Grade Auction Basket)**

**This helps us match your hours in FACTS.**