



# The Pelican Express

Let Go...Let God

AUGUST 3, 2023

## CALENDAR

### August 4

- Off-site Retreat for Faculty & Staff - office closed

### August 7 & 8

- Staggered First Day of School For Grades 1-8. Click [here](#) or visit "Latest News" for your staggered day.
- Buses will not run - Carpool Only
- Regular Office Hours Resume

### August 7

Due date for registering for Fall Sports - see page 6.

### August 10

Due date for registering for After-school Art Lessons - see page 6.

### August 11

Due date for registering for Extended Care - see page 5.

### August 14

Handbook forms are due. Once you have read the Parent/Student Handbook, print the last three page, sign and return to your homeroom teacher. Today is the due date for these forms.

### August 15

First School Mass, 8:15 - Assumption of Mary - Dress Uniforms required.

### August 17

Back To School Night for Parents only, St. Ursula, 5:30-8:00. This event is for all parents to enjoy introductions and presentations from your child's teacher(s).

### August 21-Sept 1

Circles of Grace Lessons, Sponsored by Office of Child Protection

### August 18

Classroom Coordinator Application due - found in last week's newsletter and this week's newsletter

### August 22

**Classroom Coordinator Meeting for those invited to serve as Coordinators**

### August 23

**School Pictures** - Dress Uniforms required.

### August 24

- School Mass, 8:15 - Dress Uniforms required.
- 6th Grade Bible Blessings

# Academic Calendar

- The calendar is an active, live link on our website. It can be found on the homepage or by clicking [here](#).
- The calendar is updated ongoing, so please check back even after you have written everything down in your personal planner.
- We will update upcoming dates on the first page of the weekly newsletter.

## School Day

- 7:20 am Morning carpool begins, office opens
- 7:45 am Assembly in Gym
- 7:50 am Tardy Bell - Students must be escorted to the office and signed in by a parent
- 2:15 pm No Dismissal changes can be made after this time, this includes check-out.
- 2:50 pm Afternoon carpool begins
- 3:30 pm Office closes

## Carpool

- All families should have a carpool tag regardless if the children ride the school bus or not. Your tag is to be used on those "no bus" days.
- Carpool line begins in the church parking lot, entered from Jefferson Hwy. The Church address is 15615 Jefferson Hwy.
- Follow the Carpool Map in this newsletter.

## Bus Transportation

- Bus transportation is operated through East Baton Rouge Parish School System.
- After signing up with EBR, you should have received communication stating where your pickup and drop-off spot is located in your neighborhood.
- If you have any issues, Miss Vonnie is our EBR liaison. Email her at [vchiasson@mbsbr.org](mailto:vchiasson@mbsbr.org)
- Please note: children who are not signed up through this system are not allowed to ride the bus. This also goes for cousins or friends who wish to go home with a friend who is a bus rider.

## Spirit Shirt Days

- All students' shirt sizes were entered into FACTS during Enrollment in January (new students enrolled in March).
- We have placed the initial order of spirit shirts already.
- If you want to buy an extra shirt for yourself or your child, please complete the following [form](#).
- Questions? Email Penne at [PLeier@mbsbr.org](mailto:PLeier@mbsbr.org)

## FACTS

- The database that houses grades, progress reports, report cards, service hours, financial statements.
- Your username and password is what you used to enroll. Click [here](#) to access FACTS. You may also access it from our website.
- When logging into the FACTS Family Portal from our website, our district code is **MBS-LA**.
- You can also download our MBS App to access FACTS.

# Newsletter

- The "Pelican Express" is published every Thursday and is emailed to parents through FACTS.
- It contains vital information pertaining to school events, reminders, volunteer opportunities for service hours, Child Protection info, and ongoing updates to handbook
- All previous newsletters from the current school year are kept on the website under NEWS.

## Parent/Student Handbook

- Located on the MBS website under "Parents."
- The updated school year's handbook has changes highlighted in blue.
- All families are required to read and agree to all Handbook Policies.
- The three agreements at the end of the handbook are to be printed, signed, and returned to your child's teacher by Monday, August 14.

## Uniforms

- Please pay careful attention to the uniform policy in the Handbook, including the length of hems.
- Dress uniforms must be worn on Mass days and special days designated by administration (such as School Picture Day)

## Mass Attendance

- Parents are invited to attend weekly School Mass; however, the students are to remain in their class section to celebrate Mass as a class.
- On your child's class Mass (which is different from weekly Mass), you are invited to sit with your child.
- If a child is tardy on Mass day, parents must still check in the student in the School Office. They will direct you to either drive your child to Mass, or the child may stay in the office.

## In-Parish Tuition

Parent's Commitment to Church and School

- Enrollment and/or continued enrollment at Most Blessed Sacrament Catholic School requires a commitment to ALL of the following:
  - Prayer and Mass – Families must commit to daily prayer at home. Catholic families must attend weekly, Sunday, Mass on Holy Days of Obligation. Non-Catholic families must attend Sunday services at their home church.
  - Service – Twenty (20) hours of Time and Talent given to the school and/or Church each year. Hours must be completed between January 1 and December 31 to receive the in-parish tuition rate. These hours are reviewed each year. Definition of an hour of Time and Talent: an actual hour of volunteer work or donation purchases of \$10
  - Weekly Church Offering – As an Identified Offertory Giver (IOG), a minimum amount of \$325.00 must be donated, yearly, to the Most Blessed Sacrament General Offertory or Building Fund to support the Church stewardship program. Church members who meet the IOG requirement will receive in-parish tuition. Donations will be verified by December 15 unless otherwise authorized by the Pastor or Principal. Any offerings thereafter will count towards the next school year.
- New Students Clause – Time and Talent hours are prorated for new students. However, new families must still meet the IOG requirement of \$325.00 to receive in-parish tuition.

# ClassLink

- This is the single-sign on that students use in school.
- Install the ClassLink Chrome extension on non-school devices. This extension works with ClassLink to automatically fill in the username and password for each textbook/URL.
- The ClassLink will not work on iPhones.
- Click the following [link](#) and then sign in with Google.

# SchoolBucks

- [MySchoolBucks.com](#) is the site for parents to put money into their student's account.
- You will have to create an account and "find" your student.
- When looking for your student, your school is "Diocese of Baton Rouge Child Nutrition Program"
- BR Diocese Child Nutrition will enter your child's name AFTER the first day of school. We will still feed your child!
- You will be able to see your child's balance and set up autopay settings.

# Lunch Menu & Prices

- The monthly menu will be posted on our School Website once it is checked against our pantry inventory. It may differ from the one that is posted on the CNP [website](#).
- The Child Nutrition Program website has breakfast and lunch prices.
- Any student who attends a Diocesan school may apply for free or reduced price meals. Visit their [website](#) to submit an application.

# Extended Care

- Extended care registration has been reopened for those who wish to enroll.
- Click [here](#) for registration. Registration must be completed by **Friday, August 11**.
- Any student who is not picked up in Carpool will be sent to Extended Care for a drop-in fee.



If this newsletter doesn't answer your questions,  
visit our website on "Who to Contact" or click [here](#).



## Art Lessons grades 1-8



Mr. Michelli, our ART Teacher, will hold Art Lessons after school over a 6-week period. Sign up for one or all 6! Will take place in his classroom.  
click [here](#) for more info and to sign up.

## MBS Pelibot Club

Middle School Students-

- Learn to program and control Lego Spike Robots
- Compete locally
- Thursdays after school 2:45-4 starting Sept 5
- \$25 (covers competition costs and shirts)
- Click [here](#)

# Fall Sports

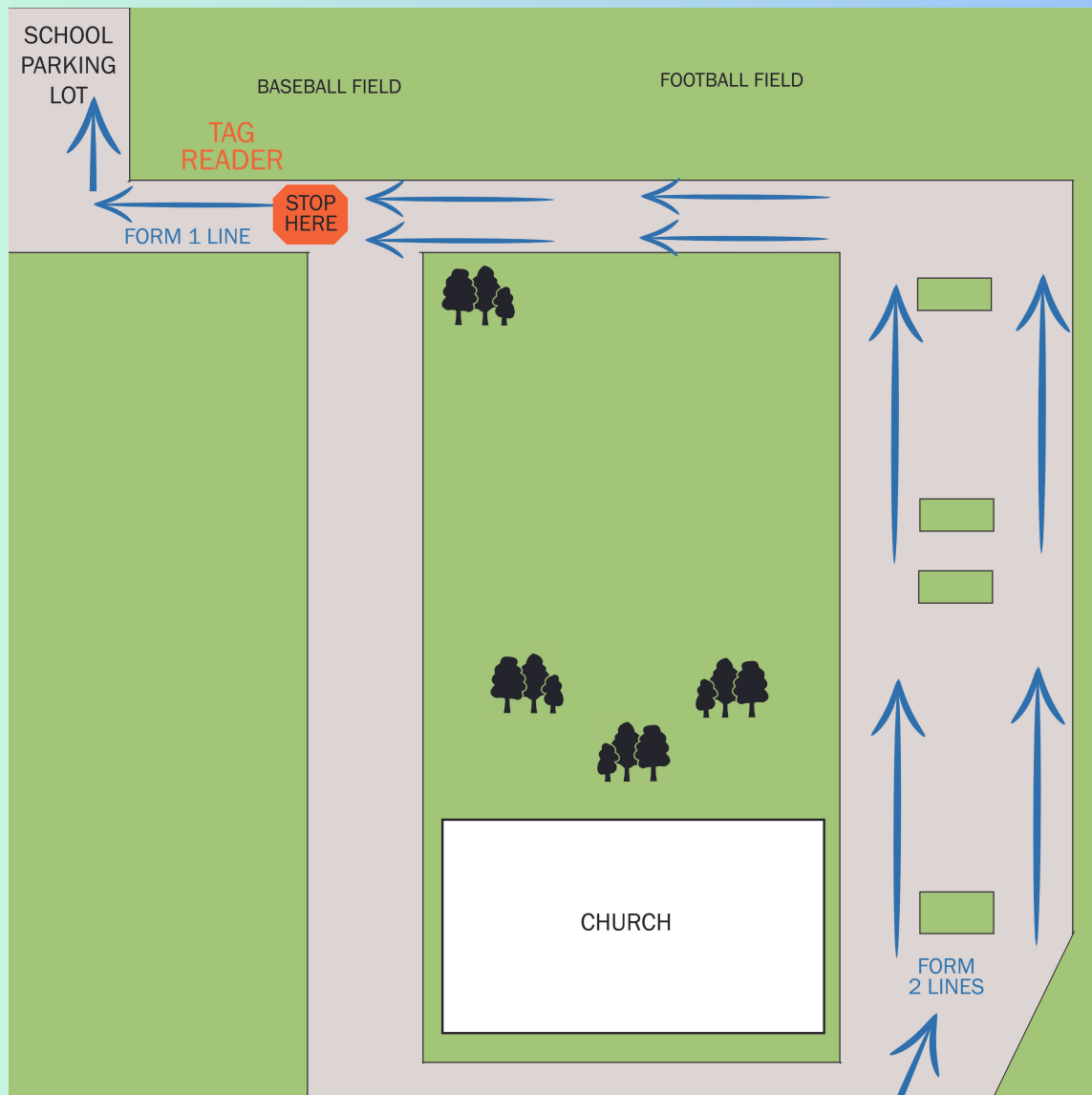
Football, Cross Country, Swim & Girls Basketball

If your MBS students would like to play Fall Athletics, please complete the following [form](#).



# Due 8/7

# CARPOOL



## Morning Carpool: 7:20-7:50

Tardy Students must be signed in the office by an adult.

## Afternoon Carpool: 2:45-3:10

Students not picked up will be sent to Extended Care for a Drop-in Fee.

Check Handbook for Complete Procedures.

# CARPOOL

## Procedures

- New families will receive two carpool tags. Everyone needs to have a carpool tag on those days that we have early dismissal, or no bus days. Additional carpool tags can be ordered by completing the following [form](#) and turning it & your money in to Mrs. Vonnie.
- All carpool traffic must enter the campus through the CHURCH parking lot on Jefferson Hwy. Only two cars (who were awarded this privilege at the Gala/Auction) are allowed to enter through Baringer.
- Two lines form and turn into one line at the CAR RIDER PRO TAG READER sign. Afternoon carpool: *Do not enter the single-line through the car rider tag reader until 2:30.*
- Each car proceeds into the SCHOOL parking lot through the gate.
- Continue to proceed until directed to stop.
- Afternoon carpool: proceed to an open, colored cone.
- Allow the teacher on duty or the Safety Patrol student to open the door.
- Direct your child to sit and buckle when you are in the parking lot or gravel lot.
- More information about Transportation and Carpool may be found in the [Parent/Student Handbook](#).

## Reminders

- NO CELL PHONE USAGE DURING CARPOOL.
- If you do not have your tag, you will be asked to park in the lot and wait until the end of carpool to get your child from the Teacher on Duty.
- Students must exit car from the Passenger Side. If you stop in the church parking lot to move kids around, please do not stop in the middle of carpool lines.
- Please maintain the cleanliness of your vehicle. We have had personal items fall out of the car and roll under the car, causing delays in the carpool.
- Please be kind to the Safety Patrol Crew. They have been waiting outside just as long as you have been waiting in line.



## It's time to update!

**Most Blessed Sacrament  
Volunteer Safe Environment Files  
for 2023**



**Please email a request for updating to  
the Office of Child Protection at  
[childprotection@mbsbr.org](mailto:childprotection@mbsbr.org).**

## Update Your Volunteer File!

Please note that the Code of Ethics and the Chaperone and Volunteer Requirements Agreement must be reviewed by all volunteers of Most Blessed Sacrament annually as required by the Diocese of Baton Rouge. Please complete and submit the Code of Ethics Acknowledgement form, **page 5**, and the **Agreement form** to the MBS Office of Child Protection to update your file. For your convenience, you may scan and email the forms to [childprotection@mbsbr.org](mailto:childprotection@mbsbr.org).



**Most Blessed Sacrament**  
Catholic Church  
Parish Formation Office



## ATTENTION SECOND GRADE PARENTS

Registration for  
**1st Reconciliation & 1st Eucharist**  
preparation classes is  
***NOW OPEN!***

**Registration:** Jul. 31 - Aug. 18  
**Late Registration:** Aug. 19 - Aug. 25  
**Cost:** \$40.00 Total

**To Register:** Visit our parish website at [mbsparish.org](http://mbsparish.org) or  
scan the QR Code above!

Questions? Email West Giffin, Director of Christian Formation, at  
[wgiffin@mbsbr.org](mailto:wgiffin@mbsbr.org)

# Volunteerism - Time & Talent

- In order to volunteer on school or church campus, you must go through the Office of Child Protection to update your credentials.
- Opportunities to volunteer and get service hours will be placed here in the newsletter.
- Upcoming Events:
  - Back to School Night - August 17
  - MBS Parish Fair - October 27-29
  - MBS Fun Run - November 10

## OFFICE OF CHILD PROTECTION

### Circle of Grace- Safe Environment Training Program

The USCCB Charter for the Protection of Children and Young People requires that all children enrolled in Catholic Schools and Parish Schools of Religion receive Safe Environment training. The Diocese of Baton Rouge will provide such training for grades K-12 utilizing the program, Circle of Grace.

The Circle of Grace lesson(s) for your child's grade level is scheduled on the following dates.

Grades K-8 August 21-25, 2023, and August 28 – September 1, 2023

The Circle of Grace lesson plan for your child's grade level may be reviewed at the following link. <https://learncat.diobr.org/circle-of-grace>

Password: CareSafeChurch.



Please note that many of the lessons have a parent letter explaining the grade-level content. Parent letters will be sent home. The information in the parent letters is meant to be discussed between parents and students at home. The parent letter will not be discussed in class. Some lessons require a parent to sign and return the letter or activity page for documentation.

Parents have the right to opt their children out of receiving Safe Environment training. If you choose not to have your child participate in the training, it is required that you sign and submit the Circle of Grace Opt-out form for grades K-8 to: Roslyn Landry in the Office of Child Protection by Wednesday, August 16, 2023.

\*Please note that opt-out forms will not be accepted after August 16, 2023.



[August Cafeteria Help](#)

[Classroom Coordinator Signup](#)

ATTENTION: YOUTH

*Do You Love to Sing?*

## *Join Youth Schola Cantorum*

*Come lift your voices & glorify God at mass.*

Practices begin Thursday,  
August 17th  
4:45 - 5:45 p.m.

Any questions or to register,  
contact Mrs. Rebecca LeBlanc at 225-405-7233  
or [rebeccaleblanc@cox.net](mailto:rebeccaleblanc@cox.net).

## 6th - 8th Graders:

The official MBS P.E. uniform must be purchased from the designated uniform stores. The uniform consists of maroon gym shorts and a gray t-shirt with the official school emblem. These are to be of sufficient size to be modest and allow free movement. (Last year's uniform probably doesn't fit this year.)

Bring your PE uniform to school; do not wear your shirt under your school uniform.

You may also want to bring deodorant to reapply on PE days.

## NO SCHOOL DAYS

### September 29

#### Professional Development

- PK-5 Do Not attend
- 6-8 DO attend school

### October 2

#### Professional Development

- 6-8 Do not attend
- Pk-5 Do attend school





# Time & Talent (Service Hours)

## Parent's Commitment to Church and School

Enrollment and/or continued enrollment at Most Blessed Sacrament Catholic School requires a commitment to ALL of the following:

- **Prayer and Mass** – Families must commit to daily prayer at home. Catholic families must attend weekly, Sunday, Mass on Holy Days of Obligation. Non-Catholic families must attend Sunday services at their home church.
- **Service** – Twenty (20) hours of Time and Talent given to the school and/or Church each year. Hours must be completed between January 1 and December 31 *to receive the in-parish tuition rate*. These hours are reviewed each year.

Definition of an hour of Time and Talent: an actual hour of volunteer work or donation purchases of \$10

- **Weekly Church Offering** – As an Identified Offertory Giver (IOG), a minimum amount of \$325.00 must be donated, yearly, to the Most Blessed Sacrament General Offertory or Building Fund to support the Church stewardship program. Church members who meet the IOG requirement *will receive in-parish tuition*. Donations will be verified by December 15 unless otherwise authorized by the Pastor or Principal. Any offerings thereafter will count towards the next school year.

### New Students Clause

Time and Talent hours are prorated for new students. However, new families must still meet the IOG requirement of \$325.00 to receive in-parish tuition.

### Log your Service Hours into FACTS.

Go to Family > Family Home. You will see "Service Hours" in the middle of the screen. Click "add" to add the hours. You must type in a description. Select "type a custom value," and then type your description.

### Sending Items to School

Please label your items that you send to school from a SignUp Genius:

- Parent Name (signed up on the SUG)
- Name of item
- Title of Sign Up (ex: 5th Grade Auction Basket)

This helps us match your hours in FACTS.



Greetings from MBS Athletics!

We hope your summer is going well. We look forward to school starting and to our Fall sports programs! Many coaches and players are already working to develop their skills. Big things are coming for MBS Athletics, including the opening of an ONLINE STORE for Pelicans fan gear!! “Early Pelican Special” – Order your fan gear!!

**\*Online Store Info\*** = <https://rockteamsports.chipply.com/MBS/>

Orders will be processed after the store closes and then sent directly to the person who purchased them. (This is not like Amazon where you might have your order in a few days.)

We are looking forward to the start of school. It will be great to see all our students on campus. Our coaches and volunteers have been working hard to prepare for the Fall sports programs. Fall sports will include Swimming, Cross Country, Girls Basketball and Football. **Registration is going on now.**

“Parish Sports” will also take place in the fall, more information coming soon. Athletics can be an important part of a young person’s life. It teaches discipline and self-pride while helping one realize the importance of cooperation. Athletics are a component of, and interact with, the spiritual, social and academic components of the overall school program. MBS recognizes that support from the administration, faculty, staff, coaches, parents and fans are necessary in providing a positive Catholic athletic experience for the student-athlete. Athletes, parents, and fans are a direct reflection of MBS and should adhere to the philosophy of the school by always acting in a dignified manner.

I look forward to meeting all of you!

Go Pelicans!

Tommy Krysan, Athletic Director

MBS Athletics

tkrysan@mbsbr.org



**MBS ATHLETICS**

# MBS Yellow Pages



[www.southerncottonblooms.com](http://www.southerncottonblooms.com)

Locally-owned online boutique offering classic clothing & accessories with a touch of modern flair.

MBS families invited to use code MBS10 for 10% off your online purchase

**MBS Children: Marikate Comeaux, Kindergarten**

**CHELSEA MENG**  
REALTOR®

LIVE **BTR** 

CELL: 337-849-5121

EMAIL: CMENG@LATTERBLUM.COM

WWW.HOMESINBR.COM

LATTER & BLUM 7414 PERKINS RD SUITE 200 BATON ROUGE, LA 70808



*Proud mom of  
Crawford-4th grade  
Amelia Jane-2nd grade*



**Chelsea**  
SCHEXNAILDRE  
REALTOR® 

cell: 225.937.0004

chelseas@remax.net

 /chelseasellsbr

**RE/MAX**  
PROFESSIONAL

Each Office is Independently Owned and Operated

office: 225.615.7755  
8556 Jefferson Hwy., Ste A  
Baton Rouge, LA 70809 

## Fringe Walls by Kathryn

- Custom Fringe Backdrop walls for any occasion.
- Light weight, weather resistant and re-useable.
- Balloons just pop- this lasts for years!

rothkamm101@gmail.com

225.445.1100

**MBS Daughter:**  
**Vivian - 8th Grade**



**MBS Children:**

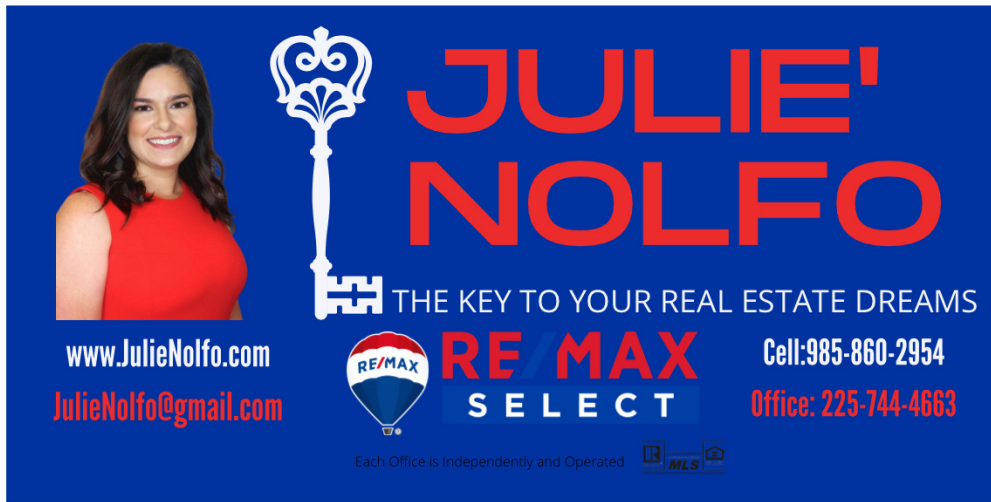
**Clayton - 5th grade**

**Marilyn - 3rd grade**

**Gwendolyn - K**



# MBS Yellow Pages



**JULIE' NOLFO**  
THE KEY TO YOUR REAL ESTATE DREAMS  
**RE MAX SELECT**  
Cell: 985-860-2954  
Office: 225-744-4663  
www.JulieNolfo.com  
JulieNolfo@gmail.com  
Each Office is Independently and Operated

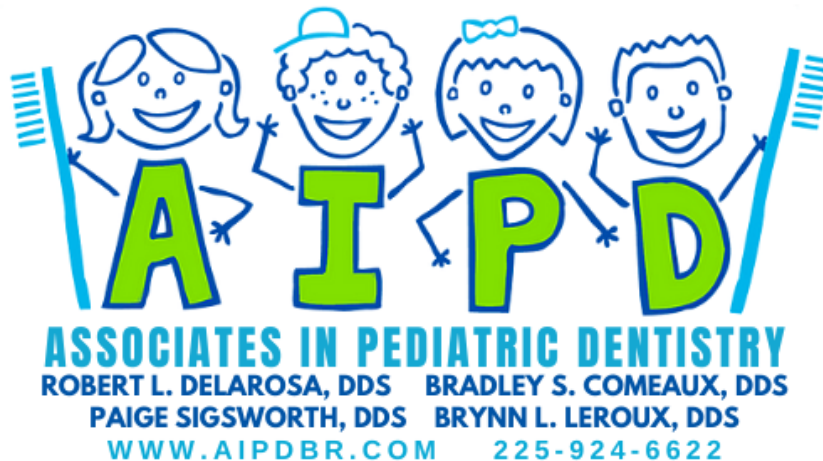


<https://www.welshscleaners.com/>

**MBS Children:**  
Olivia Ostrander K  
Kylie Ostrander ALUM  
Jerry Ostrander ALUM

**MBS Children:**  
Tristan - alum, Paisley - K

**MBS Children:**  
Bentley - 6th grade  
Addison - Alum '22



**AIPD**  
**ASSOCIATES IN PEDIATRIC DENTISTRY**  
ROBERT L. DELAROSA, DDS    BRADLEY S. COMEAUX, DDS  
PAIGE SIGSWORTH, DDS    BRYNN L. LEROUX, DDS  
WWW.AIPDBR.COM    225-924-6622



*Where the Primary Focus Is You*

**George Branigan**  
Branch Manager  
NMLS# 1152078

17111 Commerce Center Drive    (504) 300-1298 (o)  
Suite C    (225) 268-9844 (c)  
Prairieville, LA 70769    gbranigan@primeres.com

**MBS Children:**  
Parker- 3rd grade  
Riley - 1st grade



# MBS Yellow Pages

*Belle Amour*

WEDDINGS + EVENTS

Event Planning & Management Services

10% off for all MBS families

No event is too big or too small

<https://www.belleamourweddingsbr.com/>

**MBS Children: Ava Santos - 1st Grade**

GOODNESS  
*gracious*  
ceramic prints



[Facebook Page](#)

[Instagram Account](#)

**MBS Children: Felicity - 4th grade, Henry - K**



NGUYEN  
DENTAL

MBS Children:

Knox, 3rd grade

Luca, PK

[www.nguyendentalcare.com](http://www.nguyendentalcare.com)



**MBS Children:**

**Mary Commander - 4th grade**

**Maggie Commander - K**



[www.HendersonAuctions.com](http://www.HendersonAuctions.com)

**MBS Children:**

**Beau Henderson - 7th grade**

**Anne-Claire Henderson - 3rd grade**

Member SIPC

**Edward Jones** || INVESTMENTS  
MAKING SENSE OF INVESTING

**David Commander, CFP®, AAMS®**

**Financial Advisor**

16563 Airline Hwy, Ste C

Prairieville, LA 70769

225-677-8102

[edwardjones.com](http://edwardjones.com)

# MBS Yellow Pages



6555 Siegen Ln, Baton Rouge, LA 70809

**MBS Children:**  
**Ryan - Alum**  
**Luke - 8th grade**

## Kids eat free Mondays

- all-natural rotisserie chicken
- dry-rubbed chicken
- fresh, never frozen
- slow-roasted over real wood
- salads & sandwiches
- family meals & catering
- order through app for rewards, discounts, and other deals

**dine-in, carryout, or delivery**



### SERVICES OFFERED:

GRAPHIC DESIGN	MARKETING	EVENT PLANNING
Invitations Flyers & Brochures Social Media Templates Wedding Graphics	Brand Refresh & Creation Social Media Management	"Party in a Box" Day-Of Coordination Full-Service Coordination

[HTTPS://AMCREATIVE.WORK](https://amcreative.work)

**MBS Daughter:**  
**Nora Montet, K**

**Ashley Terrell Ferrer**  
REALTOR®



225.252.4927 | [ashleytferrer@gmail.com](mailto:ashleytferrer@gmail.com)

**RE/MAX** PROFESSIONAL

O: (225) 615.7755 Each Office is Independently Owned and Operated

**1996 MBS Alumni and Life Long Parishioner**

**MBS Children: Flynn - 5th grade, Hayes - 2nd grade**

*Maggie Rose  
Designs*

monogram \* appliqué  
vinyl \* embroidery  
customize designs and  
logos

**Facebook**

Angela, 241-7191

**MBS Children:**  
**Carson - Alum,**  
**Bella Rose - 7th grade**

**Want to see your business in  
our newsletter?**

**[PLeier@mbsbr.org](mailto:PLeier@mbsbr.org)**

# MBS Yellow Pages



**BERKSHIRE HATHAWAY**

HomeServices

United Properties

Real Estate Sales & Services, Leases, Investments,

Appraisals, & Consulting

[Chase.SoldByUnited.com](http://Chase.SoldByUnited.com)

Contact Chase Muller

225.615.8055

**MBS Children: Melody - 3rd grade, Margo - PK**



**MBS Children:**

**Hayes - 2ndgrade,**

**Emorie - 8th grade**

[prairievilleanimalhospital.com](http://prairievilleanimalhospital.com)



<https://riverparishpt.com/>

**MBS Son: Brady Pitre - 8th grade**



**Wheel & Tire,  
Suspension, Performance,  
& Accessory Upgrades**

[godsomotorsports.com](http://godsomotorsports.com)

**225 - 806 - 5817**

MBS Children:

Capri Godso - 1st grade

Nora Godso - PK

Slade Godso - ELC

# MBS Yellow Pages

## Primary Care **Plus**<sup>+</sup>

4710 O'Neal Lane

225.926.7200

[www.primarycareplus.com](http://www.primarycareplus.com)

**Family Medicine**

**Accepting New Patients**

**Early Appointments Available**

**MBS kids:**

**Arden 7th grade, Ryker Alum**



ANNA  
DIVINCENTI  
BOYKIN  
REALTOR

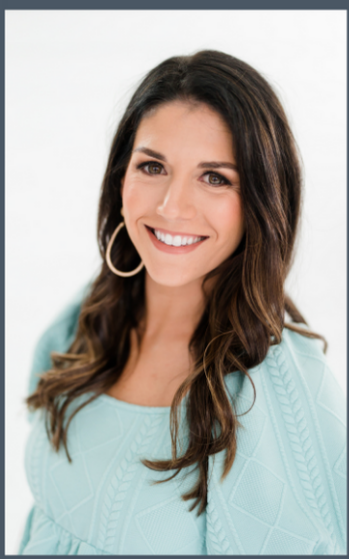
mobile | 225.252.0855

email | [annadboykin@gmail.com](mailto:annadboykin@gmail.com)

RE/MAX PROFESSIONAL  
8556 Jefferson Hwy. Ste. A  
Baton Rouge, LA 70809

*let me find your new nest*

RE/MAX  
PROFESSIONAL



**MBS Children:**

**James Davis -**

**5th grade**

**Luke Davis - PK**

**MBS Children: Luke - 3rdgrade;**

**Drew - PK**