



CLASSIC 2 AC

BODY & CHASSIS

TPO injection moulding front and rear body

POWER

Trojan Battery T875
48V 4KW AC motor
400 AMP Curtis AC Controller 25mph max speed

DIMENSIONS

Classic 2: 94" x 55" x 72"

FEATURES

- Black dashboard with four cup holders/cell phone holder
- 10"Alum Wheel, 205/50-10 Tire
- Speedometer
- Full DOT seat belts
- USB
- Evolution on-board smart charger
- LED Headlights, LED tail lights, brake lights, turn signals, horn
- Rear view mirrors
- Clear foldable windshield
- Golf bag holder
- Sweater baske

OPTION

- Lithium battery
- Balck roof
- Balck seats
- Tinted windshield

LSV Package

- 1.MSO
- 2.VIN number
- 3.License plate light
- 4.Reflectors
- 5.DOT foldable acrylic windshield



Luxury steering wheel



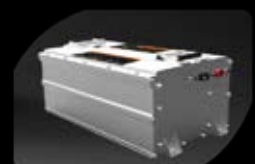
Black dashboard with four cup holders/cell phone holder



10"Alum Wheel, 205/50-10 Tire



Luxury seats



Lithium battery is optional

Optional color

WHITE	YELLOW	BLUE	RED
SILVE	GOLD	NAVY BLUE	CANDY APPLE
BLACK	LIME GREEN	COPPER	

EVOLUTION ELECTRIC VEHICLES INC

California Headquarters:4552 Brickell Privado, Ontario CA 91761
Florida Operations: 3420 SW 7th st., Suite# 101, Ocala FL 34474
909-393-6800 info@evolutionelectricvehicle.com
www.evolutionelectricvehicle.com





CLASSIC 4 AC

BODY & CHASSIS

TPO injection moulding front and rear body

POWER

Trojan Battery T875
48V 4KW AC motor
400 AMP Curtis AC Controller 25mph max speed

DIMENSIONS

Classic 4: 113"x 55" x 76"

FEATURES

- Black dashboard with four cup holders/cell phone holder
- Plastic rear seat kit with storage & cup/cell phone holders
- 10"Alum Wheel, 205/50-10 Tire
- Speedometer
- Full DOT seat belts
- USB
- Evolution on-board smart charger
- LED Headlights, LED tail lights, brake lights, turn signals, horn
- Rear view mirrors
- Clear foldable windshield
- Extended roof

OPTION

- Lithium battery
- Balck roof
- Balck seats
- Tinted windshield

LSV Package

- 1.MSO
- 2.VIN number
- 3.License plate light
- 4.Reflectors
- 5.DOT foldable acrylic windshield



Luxury steering wheel



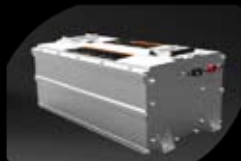
Black dashboard with four cup holders/cell phone holder



10"Alum Wheel, 205/50-10 Tire



Plastic rear seat kit with storage & cup/cell phone holders



Lithium battery is optional

Optional color

WHITE	YELLOW	BLUE	RED
SILVE	GOLD	NAVY BLUE	CANDY APPLE
BLACK	LIME GREEN	COPPER	

EVOLUTION ELECTRIC VEHICLES INC

California Headquarters:4552 Brickell Privado, Ontario CA 91761
Florida Operations: 3420 SW 7th st., Suite# 101, Ocala FL 34474
909-393-6800 info@evolutionelectricvehicle.com
www.evolutionelectricvehicle.com





CLASSIC 2 PRO

BODY & CHASSIS

TPO injection moulding front and rear body

POWER

Trojan Battery T875
48V 4KW AC motor
400 AMP Curtis AC Controller
25mph max speed

DIMENSIONS

Classic 2 pro: 94" x 55" x 72"

FEATURES

- Two tone seat
- Black dashboard with four cup holders/cell phone holder
- 14" Alum Wheel with black insert/215/35R14Radial DOT Tire
- Speedometer
- Full DOT seat belts
- USB
- Evolution on-board smart charger
- LED Headlights, LED tail lights, brake lights, turn signals, horn
- Rear view mirrors
- Clear foldable windshield
- Golf bag holder
- Sweater basket

OPTION

- Lithium battery
- Tinted windshield

LSV Package

- 1.MSO
- 2.VIN number
- 3.License plate light
- 4.Reflectors
- 5.DOT foldable acrylic windshield



Speedometer



Black dashboard with four cup holders/cell phone holder



14"aluminum wheel with black insert and radial tire



Two tone seat



Luxury steering wheel

Optional color

WHITE	YELLOW	BLUE	RED
SILVE	GOLD	NAVY BLUE	CANDY APPLE
BLACK	LIME GREEN	COPPER	

EVOLUTION ELECTRIC VEHICLES INC

California Headquarters:4552 Brickell Privado, Ontario CA 91761
Florida Operations: 3420 SW 7th st., Suite# 101, Ocala FL 34474
909-393-6800 info@evolutionelectricvehicle.com
www.evolutionelectricvehicle.com





CLASSIC 4 PRO

BODY & CHASSIS

TPO injection moulding front and rear body

POWER

Trojan Battery T875
48V 4KW AC motor
400 AMP Curtis AC Controller
25mph max speed

DIMENSIONS

Classic 4 pro: 113"x55"x76"

FEATURES

- Two tone seat
- Black dashboard with four cup holders/cell phone holder
- Plastic rear seat kit with storage & cup/cell phone holders
- 14" Alum Wheel with black insert/215/35R14 Radial DOT Tire
- Speedometer
- Full DOT seat belts
- USB
- Evolution on-board smart charger
- LED Headlights, LED tail lights, brake lights, turn signals, horn
- Rear view mirrors
- Clear foldable windshield
- Extended roof

OPTION

- Lithium battery
- Tinted windshield

LSV Package

- 1.MSO
- 2.VIN number
- 3.License plate light
- 4.Reflectors
- 5.DOT foldable acrylic windshield



Speedometer



Black dashboard with four cup holders/cell phone holder



14"aluminum wheel with black insert and radial tire



Two tone seat



Plastic rear seat kit with storage & cup/cell phone holders

Optional color

WHITE	YELLOW	BLUE	RED
SILVE	GOLD	NAVY BLUE	CANDY APPLE
BLACK	LIME GREEN	COPPER	

EVOLUTION ELECTRIC VEHICLES INC

California Headquarters:4552 Brickell Privado, Ontario CA 91761
Florida Operations: 3420 SW 7th st., Suite# 101, Ocala FL 34474
909-393-6800 info@evolutionelectricvehicle.com
www.evolutionelectricvehicle.com



CLASSIC 2 PLUS



LITHIUM BATTERY

● 5 YEAR WARRANTY ● NO MAINTENANCE ● ALUMINUM PACK

BODY & CHASSIS

TPO injection moulding front and rear body

POWER

48V lithium battery pack
48V 6.3KW AC motor
400 Amp Curtis AC controller
25mph max speed

DIMENSIONS

Classic 2 plus: 94"x55"x72"

LSV Package

- 1.MSO
- 2.VIN number
- 3.License plate light
- 4.Reflectors
- 5.DOT foldable acrylic windshield

FEATURES

- Two tone seat
- Color matched Dash with four cup holders / cell phone holder
- 14" Alum Wheel with black insert/215/35R14 Radial DOT Tire colored decorative wheel trim
- USB
- 9 inch touchscreen with back-up camera (Radio, Music, Speedometer, Bluetooth, Back-up camera, Car App connection)



9 inch touchscreen with back-up camera



Color matched Dash with four cup holders/cell phone holder



14" Alum Wheel with black insert/215/35R14 Radial DOT Tire

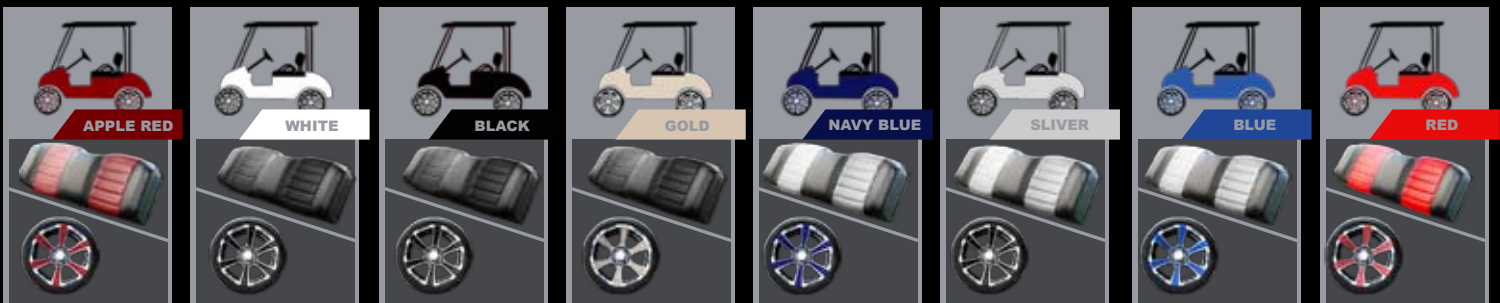


Two tone seat



Luxury steering wheel

Color matching standard



Optional color

WHITE	YELLOW	BLUE	RED	BLACK	COPPER
SILVER	GOLD	NAVY BLUE	CANDY APPLE	LIME GREEN	

EVOLUTION ELECTRIC VEHICLES INC

California Headquarters: 4552 Brickell Privado, Ontario CA 91761
Florida Operations: 3420 SW 7th st., Suite# 101, Ocala FL 34474
909-393-6800 info@evolutionelectricvehicle.com
www.evolutionelectricvehicle.com



IMAGE FOR ILLUSTRATION PURPOSES ONLY

CLASSIC 4 PLUS



LITHIUM BATTERY

- 5 YEAR WARRANTY
- NO MAINTENANCE
- ALUMINUM PACK

BODY & CHASSIS

TPO injection moulding front and rear body

POWER

48V Lithium battery
48V 6.3KW AC motor
400 Amp Curtis AC controller
25mph max speed

DIMENSIONS

Classic 4 plus: 103"x55"x74"

LSV Package

- 1.MSO
- 2.VIN number
- 3.License plate light
- 4.Reflectors
- 5.DOT foldable acrylic windshield

FEATURES

- Two tone seat
- Color matched Dash with four cup holders / cell phone holder
- Plastic rear seat kit with storage & cup/cell phone holders
- 14"Alum Wheel with black insert/215/35R14 Radial DOT Tire colored decorative wheel trim
- USB
- 9 inch touchscreen with back-up camera (Radio,Music,Speedometer,Bluetooth,Back-up camera, Car App connetion)



9 inch touchscreen with back-up camera



Color matched Dash with four cup holders/cell phone holder



14"Alum Wheel with black insert/215/35R14 Radial DOT Tire

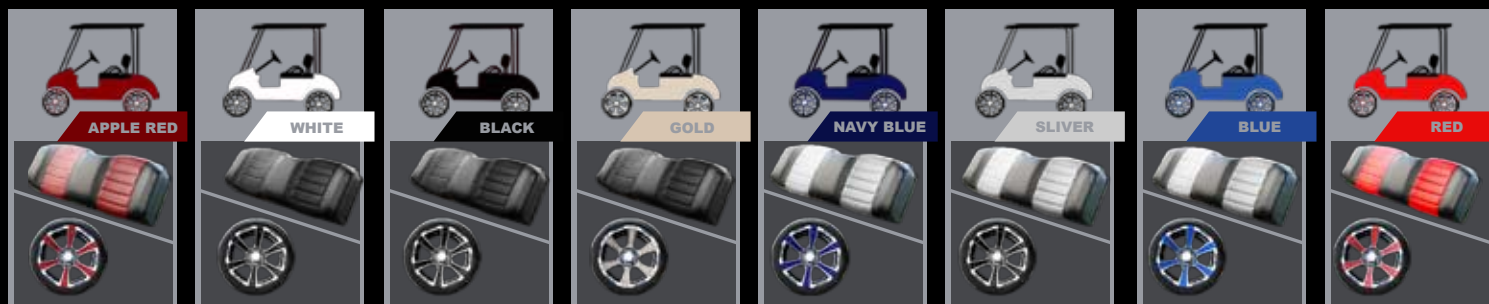


Car Stereo



Plastic rear seat kit with storage & cup/cell phone holders

Color matching standard



Optional color

WHITE	YELLOW	BLUE	RED	BLACK	COPPER
SILVE	GOLD	NAVY BLUE	CANDY APPLE	LIME GREEN	

EVOLUTION ELECTRIC VEHICLES INC

California Headquarters: 4552 Brickell Privado, Ontario CA 91761
Florida Operations: 3420 SW 7th st., Suite# 101, Ocala FL 34474
909-393-6800 info@evolutionelectricvehicle.com
www.evolutionelectricvehicle.com



IMAGE FOR ILLUSTRATION PURPOSES ONLY



CARRIER 6 AC

BODY & CHASSIS

TPO injection moulding front and rear body

POWER

Trojan Battery T105
48V 6.3KW AC motor
400 AMP Curtis AC Controller
19mph max speed

DIMENSIONS

Carrier 6: 144" x 55" x 76"

FEATURES

- Black dashboard with four cup holders/cell phone holder
- Plastic rear seat kit with storage & cup/cell phone holders
- 10"Alum Wheel, 205/50-10 Tire
- Speedometer
- Full DOT seat belts
- USB
- Evolution on-board smart charger
- LED Headlights, LED tail lights, brake lights, turn signals, horn
- Rear view mirrors
- Clear foldable windshield
- Extended roof

OPTION

- Lithium battery
- Black roof
- Black seats
- Tinted windshield

LSV Package

- 1.MSO
- 2.VIN number
- 3.License plate light
- 4.Reflectors
- 5.DOT foldable acrylic windshield
- 6.Max speed 22miles



Luxury steering wheel



Black dashboard with four cup holders/cell phone holder



10"Alum Wheel, 205/50-10 Tire



Luxury seats



Plastic rear seat kit with storage & cup/cell phone holders

Optional color

WHITE	YELLOW	BLUE	RED
SILVE	GOLD	NAVY BLUE	CANDY APPLE
BLACK	LIME GREEN	COPPER	

EVOLUTION ELECTRIC VEHICLES INC

California Headquarters: 4552 Brickell Privado, Ontario CA 91761
Florida Operations: 3420 SW 7th st., Suite# 101, Ocala FL 34474
909-393-6800 info@evolutionelectricvehicle.com
www.evolutionelectricvehicle.com



CARRIER 6 PLUS



LITHIUM BATTERY

- 5 YEAR WARRANTY
- NO MAINTENANCE
- ALUMINUM PACK

BODY & CHASSIS

TPO injection moulding front and rear body

POWER

48V Lithium battery
 48V 6.3KW AC motor
 400 Amp Curtis AC controller
 22mph max speed

DIMENSIONS

Carrier 6 Plus: 144"x55"x76"

LSV Package

- 1.MSO
- 2.VIN number
- 3.License plate light
- 4.Reflectors
- 5.DOT foldable acrylic windshield
- 6.Max speed 22miles

FEATURES

- Two tone seat
- Color matched Dash with four cup holders / cell phone holder
- Plastic rear seat kit with storage & cup/cell phone holders
- 14"Alum Wheel with black insert/215/35R14 Radial DOT Tire colored decorative wheel trim
- USB
- 9 inch touchscreen with back-up camera (Radio,Music,Speedometer,Bluetooth,Back-up camera, Car App connetion)



9 inch touchscreen with back-up camera



Color matched Dash with four cup holders/cell phone holder



14"Alum Wheel with black insert/215/35R14 Radial DOT Tire

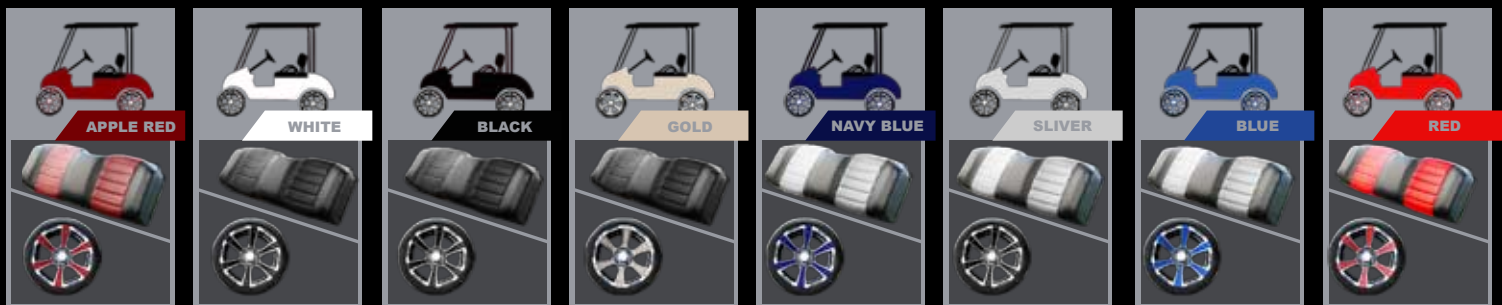


Car Stereo



Plastic rear seat kit with storage & cup/cell phone holders

Color matching standard



WHITE	YELLOW	BLUE	RED	BLACK	COPPER
SILVE	GOLD	NAVY BLUE	CANDY APPLE	LIME GREEN	

EVOLUTION ELECTRIC VEHICLES INC

California Headquarters: 4552 Brickell Privado, Ontario CA 91761
 Florida Operations: 3420 SW 7th st., Suite# 101, Ocala FL 34474
 909-393-6800 info@evolutionelectricvehicle.com
 www.evolutionelectricvehicle.com



IMAGE FOR ILLUSTRATION PURPOSES ONLY



CARRIER 8 AC

BODY & CHASSIS

TPO injection moulding front and rear body

POWER

Trojan Battery T105
48V 6.3KW AC motor
400 AMP Curtis AC Controller
19mph max speed

DIMENSIONS

Carrier 8: 176" x 55" x 76"

FEATURES

- Black dashboard with four cup holders/ cell phone holder
- Plastic rear seat kit with storage & cup/ cell phone holders
- 10" Alum Wheel, 205/50-10 Tire
- USB
- LED Headlights, LED tail lights, brake lights, turn signals, horn
- Rear view mirrors
- Clear foldable windshield
- Extended roof

OPTION

- Lithium battery
- Black roof
- Black seats
- Tinted windshield



Luxury steering wheel



Black dashboard with four cup holders/cell phone holder



10" Alum Wheel, 205/50-10 Tire



Luxury seats



Plastic rear seat kit with storage & cup/cell phone holders

Optional color

WHITE	YELLOW	BLUE	RED
SILVE	GOLD	NAVY BLUE	CANDY APPLE
BLACK	LIME GREEN	COPPER	

EVOLUTION ELECTRIC VEHICLES INC

California Headquarters: 4552 Brickell Privado, Ontario CA 91761
Florida Operations: 3420 SW 7th st., Suite# 101, Ocala FL 34474
909-393-6800 info@evolutionelectricvehicle.com
www.evolutionelectricvehicle.com



FORESTER 4 PLUS



LITHIUM BATTERY

● 5 YEAR WARRANTY ● NO MAINTENANCE ● ALUMINUM PACK

BODY & CHASSIS

TPO injection moulding front and rear body

POWER

48V Lithium battery
48V 6.3KW AC motor
400 Amp Curtis AC controller 25mph max speed

DIMENSIONS

Forester 4 plus: 117"x55"x83"

LSV Package

- 1.MSO
- 2.VIN number
- 3.License plate light
- 4.Reflectors
- 5.DOT foldable acrylic windshield

FEATURES

- Two tone seat
- Color matched Dash with four cup holders / cell phone holder
- Plastic rear seat kit with storage & cup/cell phone holders
- 14" Alum Wheel with black insert/215/35R14 Radial DOT Tire colored decorative wheel trim
- USB
- 9 inch touchscreen with back-up camera (Radio, Music, Speedometer, Bluetooth, Back-up camera, Car App connection)



9 inch touchscreen with back-up camera



Color matched Dash with four cup holders/cell phone holder



14" Color Matched Off Road Tire

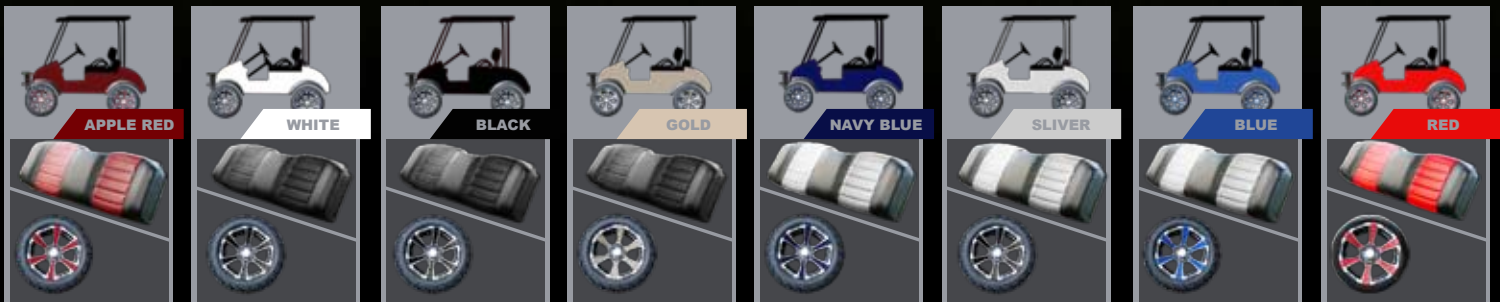


Car Stereo



Plastic rear seat kit with storage & cup/cell phone holders

Color matching standard



Optional color

WHITE	YELLOW	BLUE	RED	BLACK	COPPER
SILVE	GOLD	NAVY BLUE	CANDY APPLE	LIME GREEN	

EVOLUTION ELECTRIC VEHICLES INC

California Headquarters: 4552 Brickell Privado, Ontario CA 91761
Florida Operations: 3420 SW 7th st., Suite# 101, Ocala FL 34474
909-393-6800 info@evolutionelectricvehicle.com
www.evolutionelectricvehicle.com



IMAGE FOR ILLUSTRATION PURPOSES ONLY

FORESTER 6 PLUS



LITHIUM BATTERY

- 5 YEAR WARRANTY
- NO MAINTENANCE
- ALUMINUM PACK

BODY & CHASSIS

TPO injection moulding front and rear body

POWER

48V Lithium battery
 48V 6.3KW AC motor
 400 Amp Curtis AC controller
 22mph max speed

DIMENSIONS

Forester 6 plus: 148"x55"x87"

LSV Package

- 1.MSO
- 2.VIN number
- 3.License plate light
- 4.Reflectors
- 5.DOT foldable acrylic windshield

FEATURES

- Two tone seat
- Color matched Dash with four cup holders / cell phone holder
- Plastic rear seat kit with storage & cup/cell phone holders
- 14"Alum Wheel with black insert/215/35R14 Radial DOT Tire colored decorative wheel trim
- USB
- 9 inch touchscreen with back-up camera (Radio, Music, Speedometer, Bluetooth, Back-up camera, Car App connection)



9 inch touchscreen with back-up camera



Color matched Dash with four cup holders/cell phone holder



14" Color Matched Off Road Tire

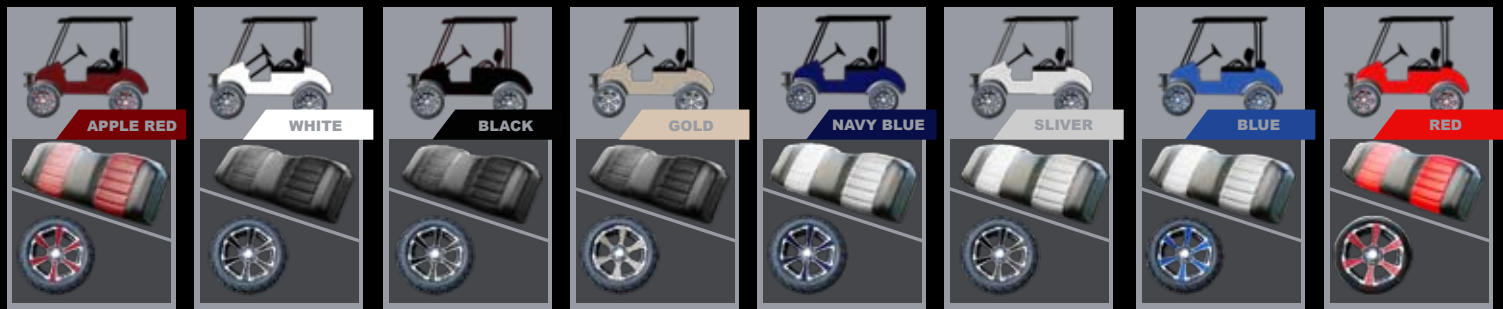


Car Stereo



Plastic rear seat kit with storage & cup/cell phone holders

Color matching standard



Optional color					
WHITE	YELLOW	BLUE	RED	BLACK	COPPER
SILVER	GOLD	NAVY BLUE	CANDY APPLE	LIME GREEN	

EVOLUTION ELECTRIC VEHICLES INC
 California Headquarters: 4552 Brickell Privado, Ontario CA 91761
 Florida Operations: 3420 SW 7th st., Suite# 101, Ocala FL 34474
 909-393-6800 info@evolutionelectricvehicle.com
 www.evolutionelectricvehicle.com



IMAGE FOR ILLUSTRATION PURPOSES ONLY



TURFMAN 200 AC

BODY & CHASSIS

TPO injection moulding front and rear body

POWER

Trojan Battery T875
48V 4KW AC motor
400 AMP Curtis AC Controller 22mph max speed

DIMENSIONS

Turfman 200: 94"x 55" x 72"
cargo box: 43"x 35" x 11"

FEATURES

- Black dashboard
- 10"Alum Wheel, 205/50-10 Tire
- Speedometer
- USB
- Evolution on-board smart charger
- LED Headlights, LED tail lights, brake lights, turn signals, horn
- Rear view mirrors
- Clear foldable windshield

OPTION

- Lithium battery
- Black roof
- Black seats
- Tinted windshield



Luxury steering wheel



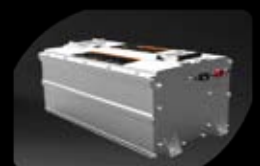
Black dashboard with four cup holders/cell phone holder



10"Alum Wheel, 205/50-10 Tire



Luxury seats



Lithium battery is optional

Optional color

WHITE	YELLOW	BLUE	RED
SILVE	GOLD	NAVY BLUE	CANDY APPLE
BLACK	LIME GREEN	COPPER	

EVOLUTION ELECTRIC VEHICLES INC

California Headquarters: 4552 Brickell Privado, Ontario CA 91761
Florida Operations: 3420 SW 7th st., Suite# 101, Ocala FL 34474
909-393-6800 info@evolutionelectricvehicle.com
www.evolutionelectricvehicle.com





TURFMAN 1000 AC

BODY & CHASSIS

TPO injection moulding front cowl

POWER

Trojan Battery T105
48V 6.3KW AC motor
400 AMP Curtis AC Controller 19mph max speed

DIMENSIONS

Turfman 1000: 131"x 55" x 72"
Cargo box: 43"x 65" x 11"

FEATURES

- Black dashboard with four cup holders/cell phone holder
- 10"Alum Wheel, 205/50-10 Tire
- Speedometer
- USB
- Evolution on-board smart charger
- LED Headlights, LED tail lights, brake lights, turn signals, horn
- Rear view mirrors
- Clear foldable windshield

OPTION

- Lithium battery
- Black roof
- Black seats
- Tinted windshield



Luxury steering wheel



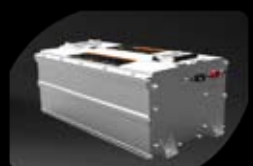
Black dashboard with four cup holders/cell phone holder



10"Alum Wheel, 205/50-10 Tire



Luxury seats



Lithium battery is optional

Optional color

WHITE

EVOLUTION ELECTRIC VEHICLES INC

California Headquarters: 4552 Brickell Privado, Ontario CA 91761
Florida Operations: 3420 SW 7th st., Suite# 101, Ocala FL 34474
909-393-6800 info@evolutionelectricvehicle.com
www.evolutionelectricvehicle.com





IMAGE FOR ILLUSTRATION PURPOSES ONLY



TURFMAN 800 AC

BODY & CHASSIS

TPO injection moulding front cowl

POWER

Trojan Battery T105
48V 6.3KW AC motor
400 AMP Curtis AC Controller
19mph max speed

DIMENSIONS

Turfman 800: 118"x 55" x 79"
Cargo box: 43"x 46"x 11"

FEATURES

- Black dashboard with four cup holders/ cell phone holder
- 10" Alum Wheel, 22x11-10 DOT tires
- Speedometer
- USB
- Evolution on-board smart charger
- LED Headlights, LED tail lights, brake lights, turn signals, horn
- Rear view mirrors
- Clear foldable windshield

OPTION

- Lithium battery
- Black roof
- Black seats
- Tinted windshield



Luxury steering wheel



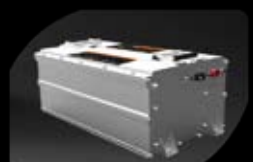
Black dashboard with four cup holders/cell phone holder



10" Alum Wheel, 22x11-10 DOT tires



Luxury seats



Lithium battery is optional

Optional color

WHITE

EVOLUTION ELECTRIC VEHICLES INC

California Headquarters: 4552 Brickell Privado, Ontario CA 91761
Florida Operations: 3420 SW 7th st., Suite# 101, Ocala FL 34474
909-393-6800 info@evolutionelectricvehicle.com
www.evolutionelectricvehicle.com

